



**18, The Green**  
Hasland, S41 0LJ

£600 PCM



## 18, The Green

Hasland, S41 0LJ

A one double bedroom flat in the popular location of Hasland and within walking distance of local amenities.

The property comprises; generously proportioned dining kitchen with teak effect wall and base units and including a cooker, fridge freezer and plumbing for a washing machine, large living room, double bedroom and bathroom fitted with three piece white suite.

For fee information please copy and paste the link below for our tenant brochure

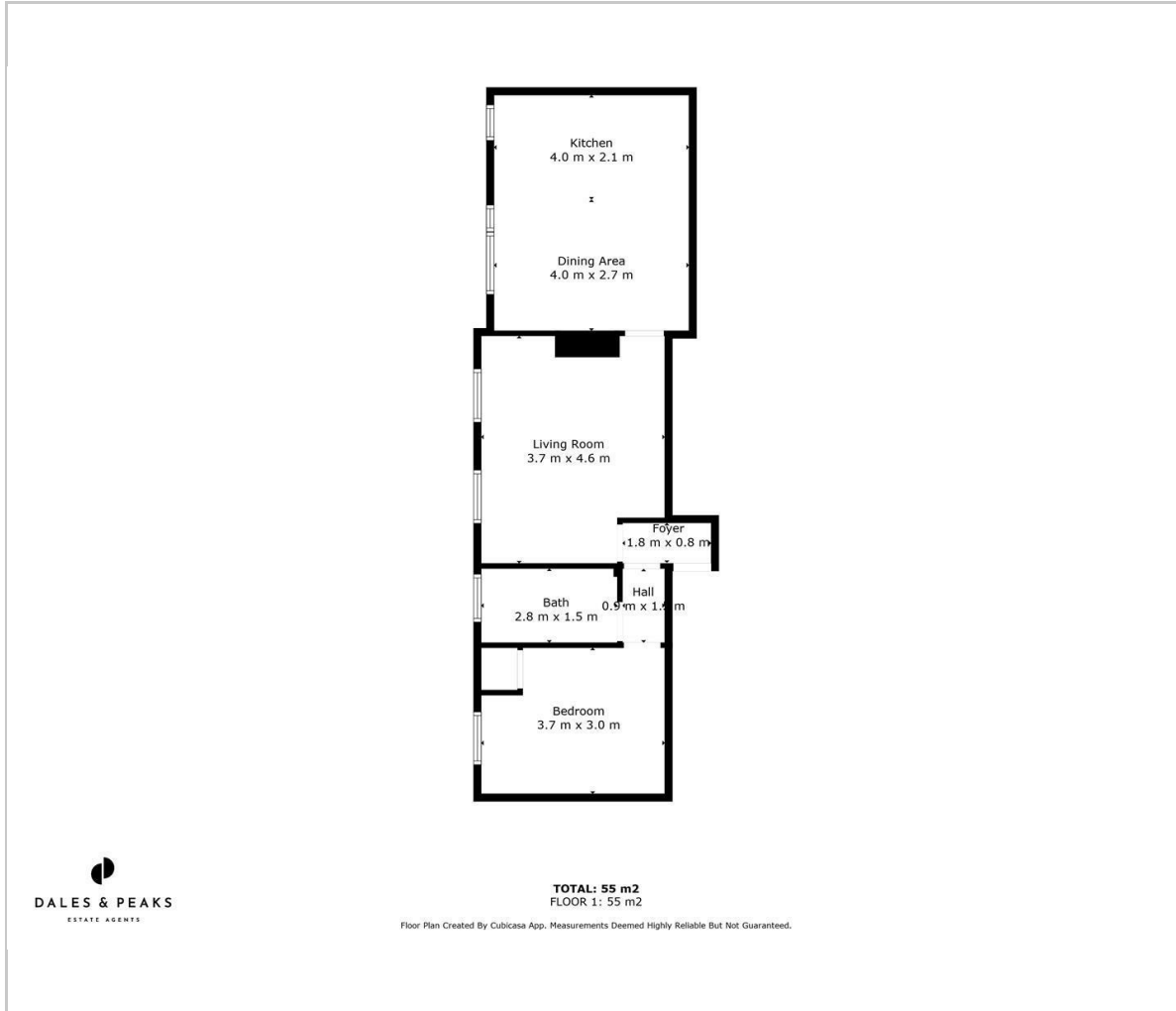
[https://ggfx-dalesandpeaks.s3.eu-west-2.amazonaws.com/i.prod/Tenants\\_broc](https://ggfx-dalesandpeaks.s3.eu-west-2.amazonaws.com/i.prod/Tenants_broc)

- \* We are a member of the Propertymark Client Money Protection Scheme - [propertymark.co.uk](http://propertymark.co.uk)
- \* We are a member of The Property Ombudsman Scheme - [tpos.co.uk](http://tpos.co.uk)
- \* We place all our deposits in the Deposit Protection Scheme DPS - [depositprotection.com](http://depositprotection.com)





## Floor Plan

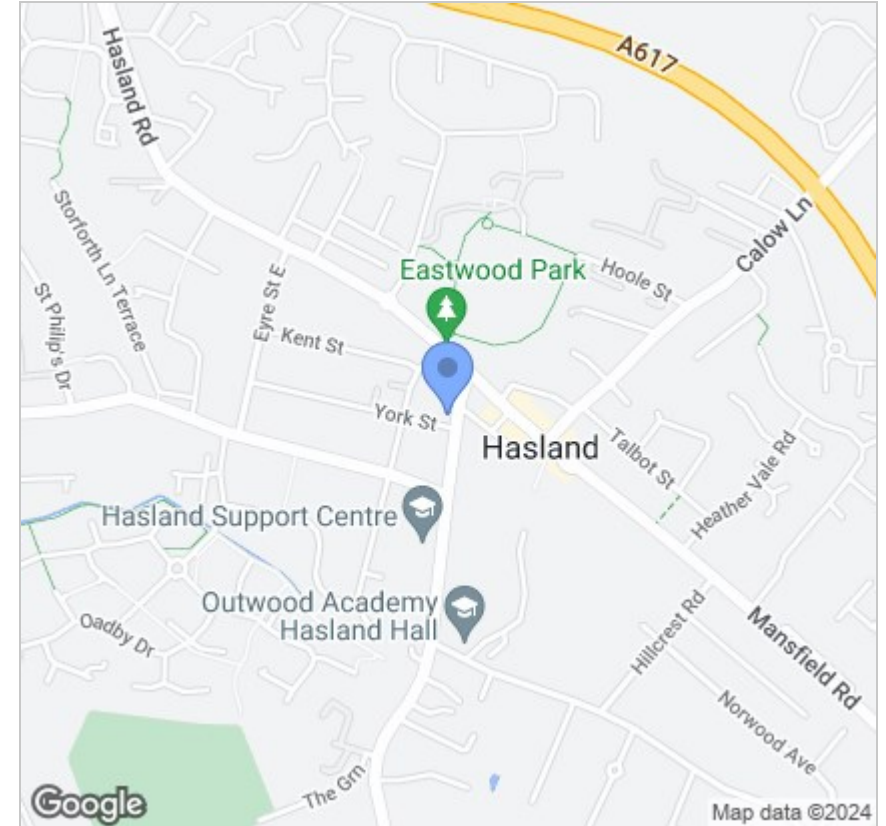


## Viewing

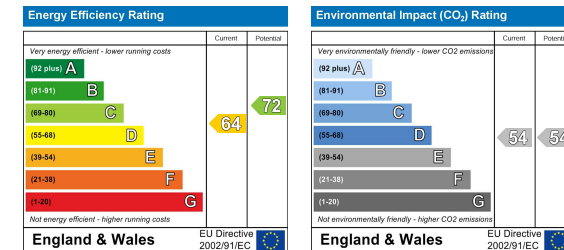
Please contact our Chesterfield Office on 01246 567540 if you wish to arrange a viewing appointment for this property or require further information.

These particulars, whilst believed to be accurate are set out as a general outline only for guidance and do not constitute any part of an offer or contract. Intending purchasers should not rely on them as statements of representation of fact, but must satisfy themselves by inspection or otherwise as to their accuracy. No person in this firm's employment has the authority to make or give any representation or warranty in respect of the property.

## Area Map



## Energy Efficiency Graph



131 Chatsworth Road, Chesterfield, Derbyshire, S40 2AP  
T: 01246 567540

E: info@dalesandpeaks.co.uk  
www.dalesandpeaks.co.uk