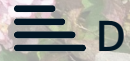




10 Dunston Road
Chesterfield, S41 9RW

£300,000



10 Dunston Road

, Chesterfield, S41 9RW

Situated in this stunning semi rural location, enjoying scenic countryside views towards Barlow and boasting a large garden, is this attractive and characterful 3 bedroom detached family home, presenting fantastic potential to renovate, modernise and potentially extend subject to relevant planning. .

Located on the outskirts of Chesterfield, neighbouring Cutthorpe and Barlow, 10 Dunston Road is surrounded by stunning Derbyshire countryside, on the edge of the Peak District National Park and within close proximity to local amenities and transport links.

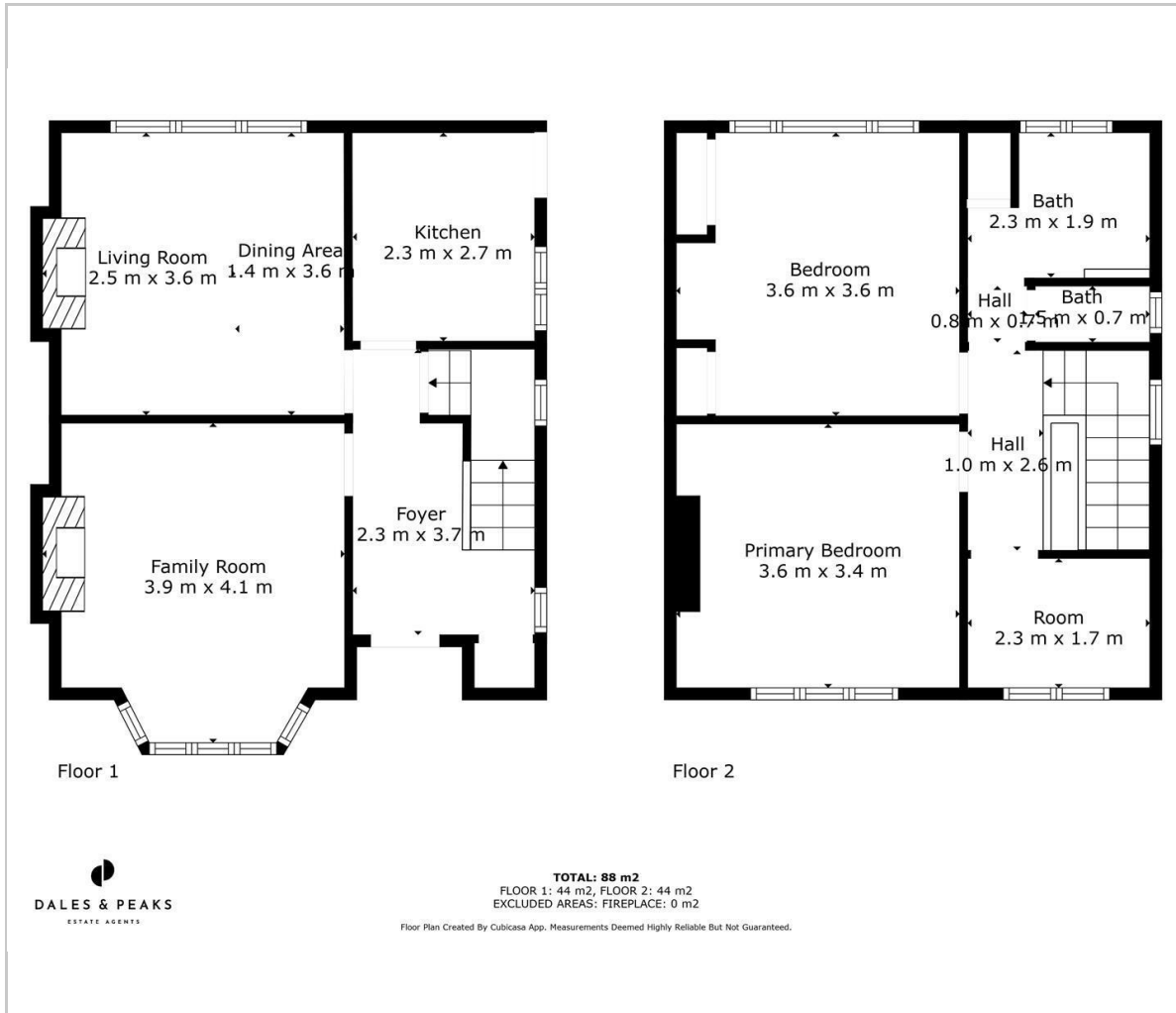
Offering a spacious 947 sqft of accommodation over 2 storeys, the property features 2 reception rooms, a fitted kitchen, bathroom and separate WC, 3 good sized bedrooms including 2 doubled and a single.

**Dales & Peaks ForwardMove
please read**

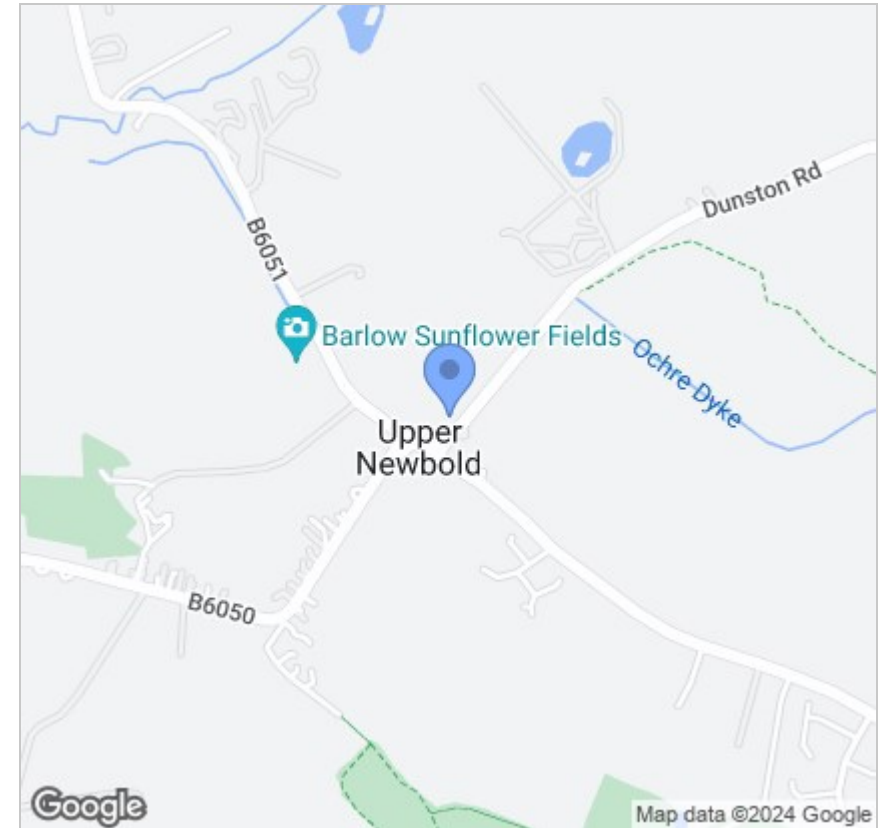




Floor Plan



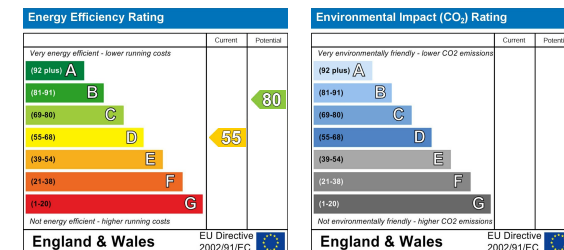
Area Map



Viewing

Please contact our Chesterfield Office on 01246 567540 if you wish to arrange a viewing appointment for this property or require further information.

Energy Efficiency Graph



These particulars, whilst believed to be accurate are set out as a general outline only for guidance and do not constitute any part of an offer or contract. Intending purchasers should not rely on them as statements of representation of fact, but must satisfy themselves by inspection or otherwise as to their accuracy. No person in this firm's employment has the authority to make or give any representation or warranty in respect of the property.



131 Chatsworth Road, Chesterfield, Derbyshire, S40 2AP
 T: 01246 567540

E: info@dalesandpeaks.co.uk
 www.dalesandpeaks.co.uk