



## 5 School Court

New Road, S42 7DL

£225,000



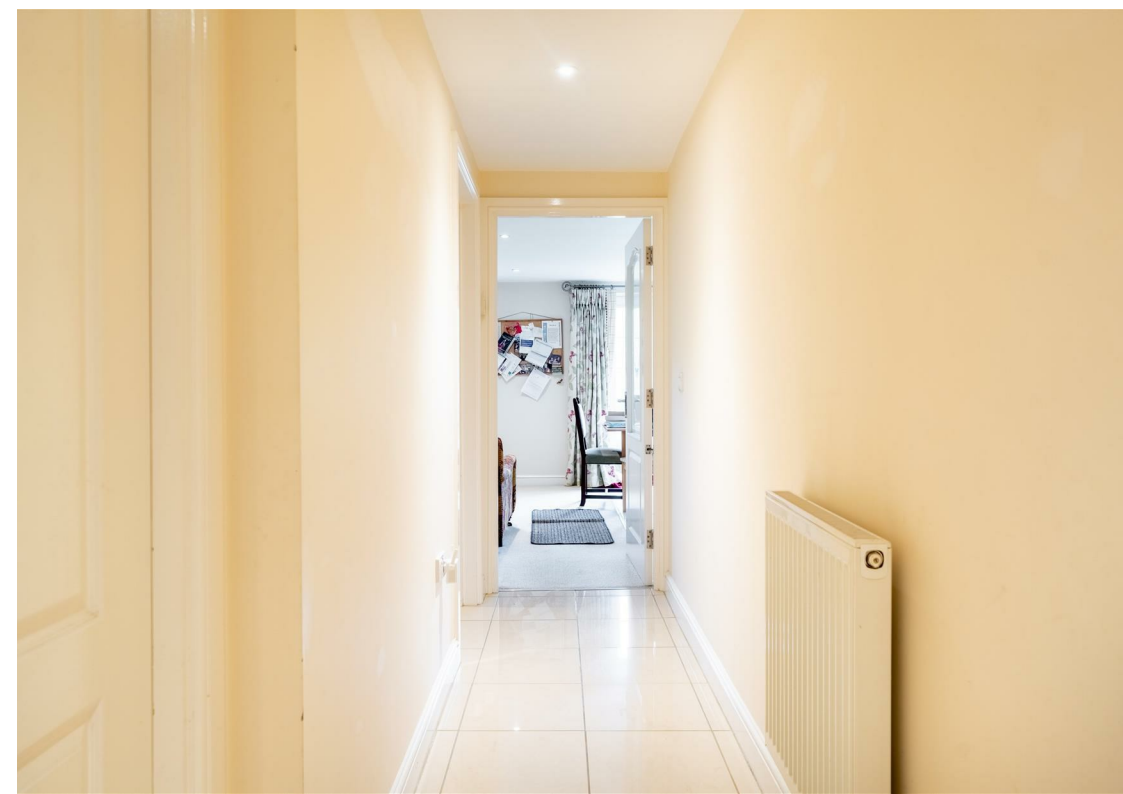
## 5 School Court

New Road, S42 7DL

Situated in the picturesque village of Holymoorside, in this sought after development with glorious Derbyshire countryside and village amenities right on it's doorstep is this well presented 2 bedroom ground floor apartment. Offering 675 sqft of accommodation, the apartment features an open-plan living and dining kitchen with integrated appliances and patio doors to the apartments rear garden, 2 generously sized bedrooms and a modern bathroom with bath and overhead shower

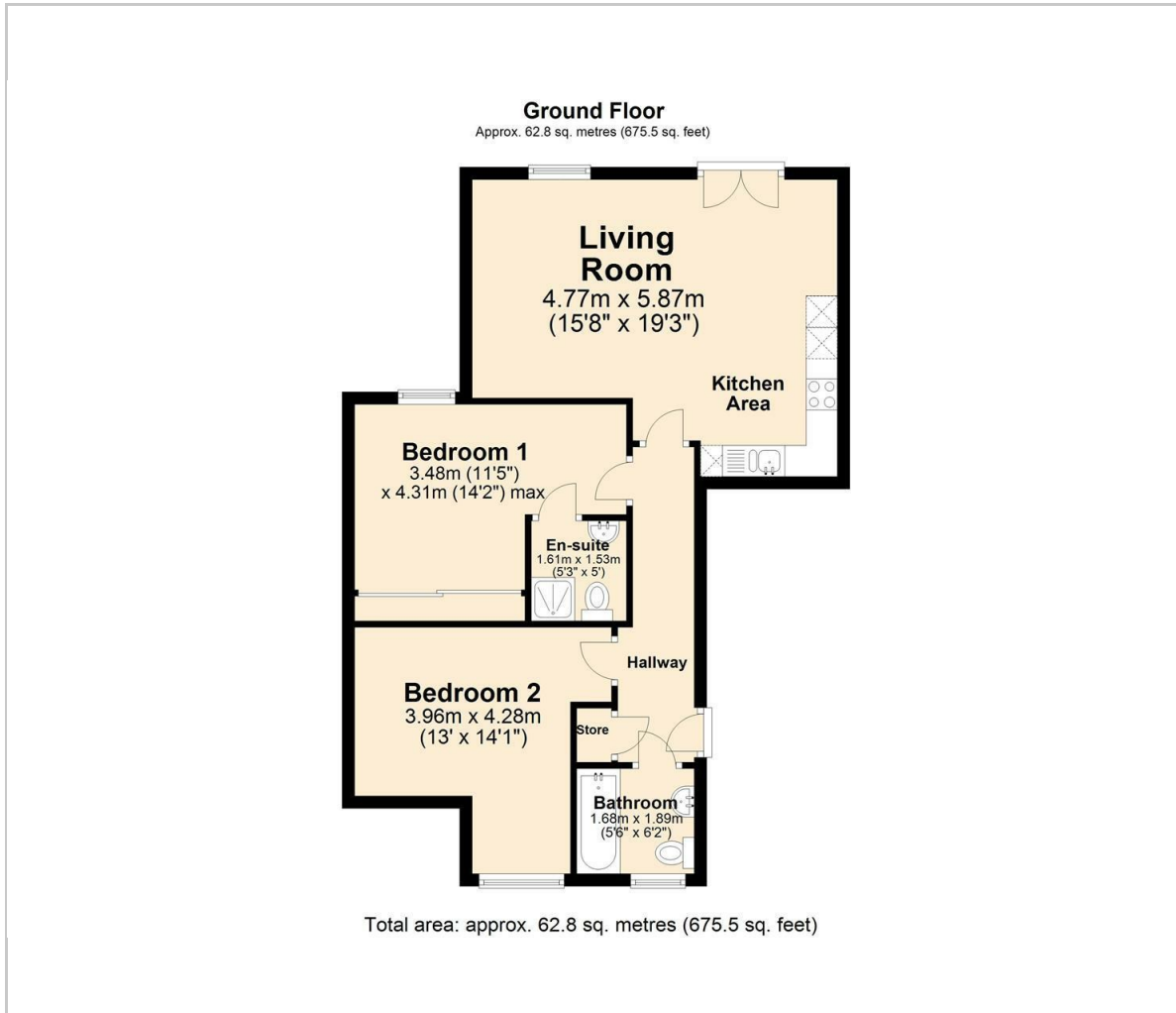
The apartment benefits from a privately owned garden with stunning views and designated parking within the developments private parking.

**Dales & Peaks ForwardMove  
please read**





## Floor Plan



## Viewing

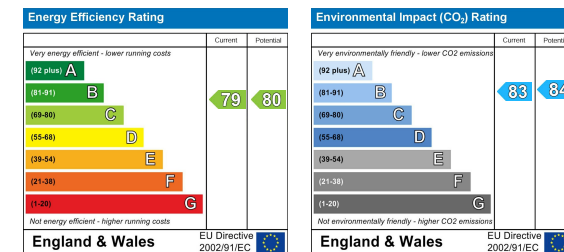
Please contact our Chesterfield Office on 01246 567540 if you wish to arrange a viewing appointment for this property or require further information.

These particulars, whilst believed to be accurate are set out as a general outline only for guidance and do not constitute any part of an offer or contract. Intending purchasers should not rely on them as statements of representation of fact, but must satisfy themselves by inspection or otherwise as to their accuracy. No person in this firm's employment has the authority to make or give any representation or warranty in respect of the property.

## Area Map



## Energy Efficiency Graph



131 Chatsworth Road, Chesterfield, Derbyshire, S40 2AP  
T: 01246 567540



E: info@dalesandpeaks.co.uk  
www.dalesandpeaks.co.uk