



**Holmelea Croft Main Street**  
Calver, Hope Valley, S32 3XR  
£1,100,000



## Holmelea Croft Main Street

Calver, Hope Valley, S32 3XR

An exceptionally well presented 6 bedroom detached property, offering 2486 sqft of living accommodation over 3 storeys. Situated in the highly sought after Peak District village of Calver, Holmelea Croft benefits from beautifully presented gardens, a sweeping driveway providing ample off street parking and double garage.

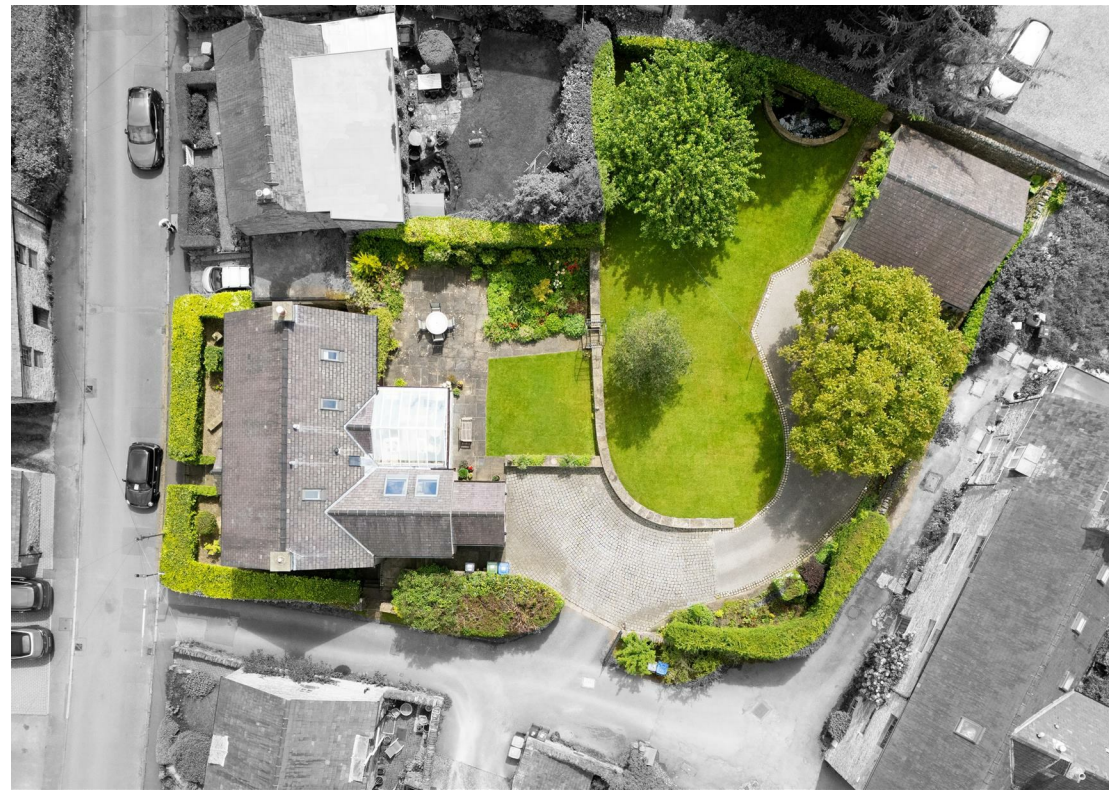
The lower ground floor comprises; Master bedroom with dressing area and ensuite bathroom, 2 further double bedrooms, single bedroom/home office, main family bathroom and utility room.

The ground floor comprises; Rear entrance porch, open plan dining kitchen with granite worktops and integrated appliances, conservatory with doors onto the patio and garden. Front aspect formal dining room, WC and spacious living room with log burning stove.

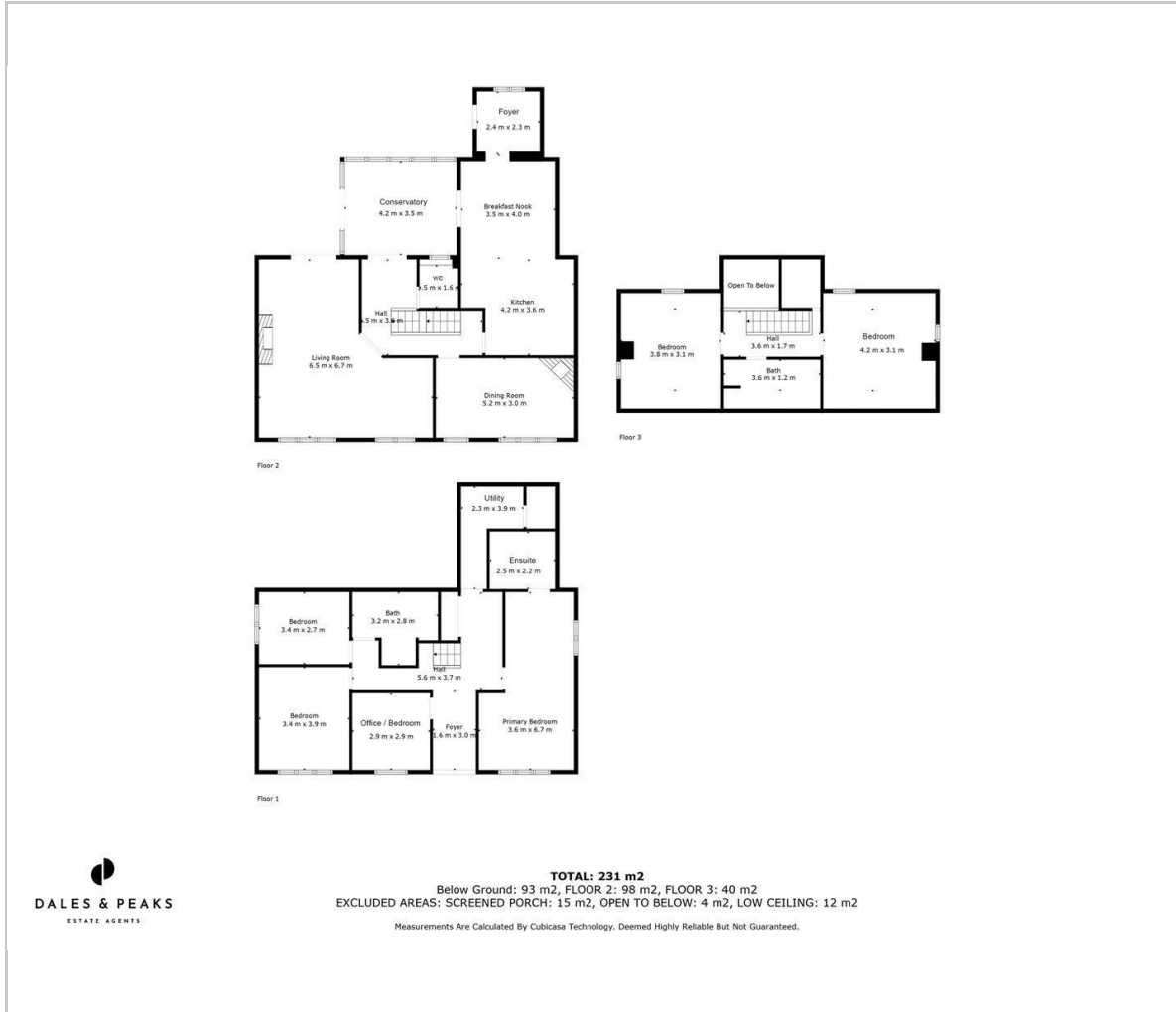
The first floor comprises; Two double bedrooms with storage in the eaves and bathroom.

**Dales & Peaks ForwardMove -  
Please read**





## Floor Plan

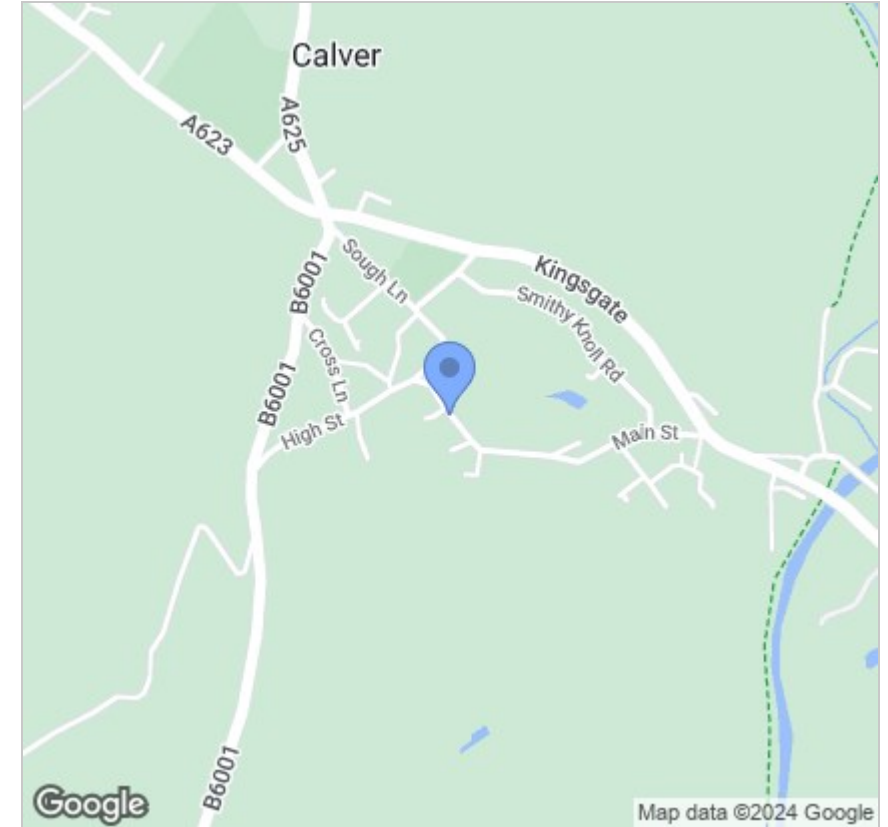


## Viewing

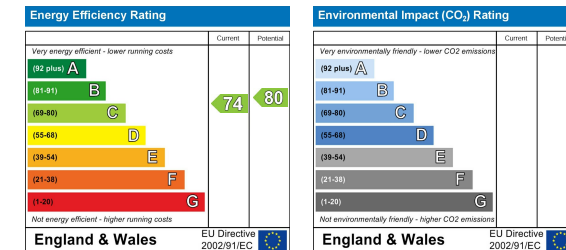
Please contact our Chesterfield Office on 01246 567540 if you wish to arrange a viewing appointment for this property or require further information.

These particulars, whilst believed to be accurate are set out as a general outline only for guidance and do not constitute any part of an offer or contract. Intending purchasers should not rely on them as statements of representation of fact, but must satisfy themselves by inspection or otherwise as to their accuracy. No person in this firm's employment has the authority to make or give any representation or warranty in respect of the property.

## Area Map



## Energy Efficiency Graph



131 Chatsworth Road, Chesterfield, Derbyshire, S40 2AP  
 T: 01246 567540



E: info@dalesandpeaks.co.uk  
 www.dalesandpeaks.co.uk