



**38 Woodcote Way**  
Chesterfield, S40 3FF

£1,295 PCM



## 38 Woodcote Way

, Chesterfield, S40 3FF

Situated in this sought after development in Walton, on the outskirts of Chesterfield Town Centre, neighbouring stunning Derbyshire countryside and right on the doorstep of an abundance of local amenities and the vibrant suburb of Brampton, where you will find a selection of boutique shops, cafes and independent restaurants, is this superb 3 bedroom detached home.

The accommodation comprises; entrance hallway, kitchen diner with integrated oven, dishwasher, fridge freezer and gas hob, ground floor WC, lounge, and 3 good sized bedrooms. Master bedroom with en-suite plus 2 further bathrooms.

For fee information please copy and paste the link below for our tenant brochure

[https://ggfx-dalesandpeaks.s3.eu-west-2.amazonaws.com/i.prod/Tenants\\_broc](https://ggfx-dalesandpeaks.s3.eu-west-2.amazonaws.com/i.prod/Tenants_broc)

\* We are a member of the Propertymark Client Money Protection Scheme - [propertymark.co.uk](http://propertymark.co.uk)

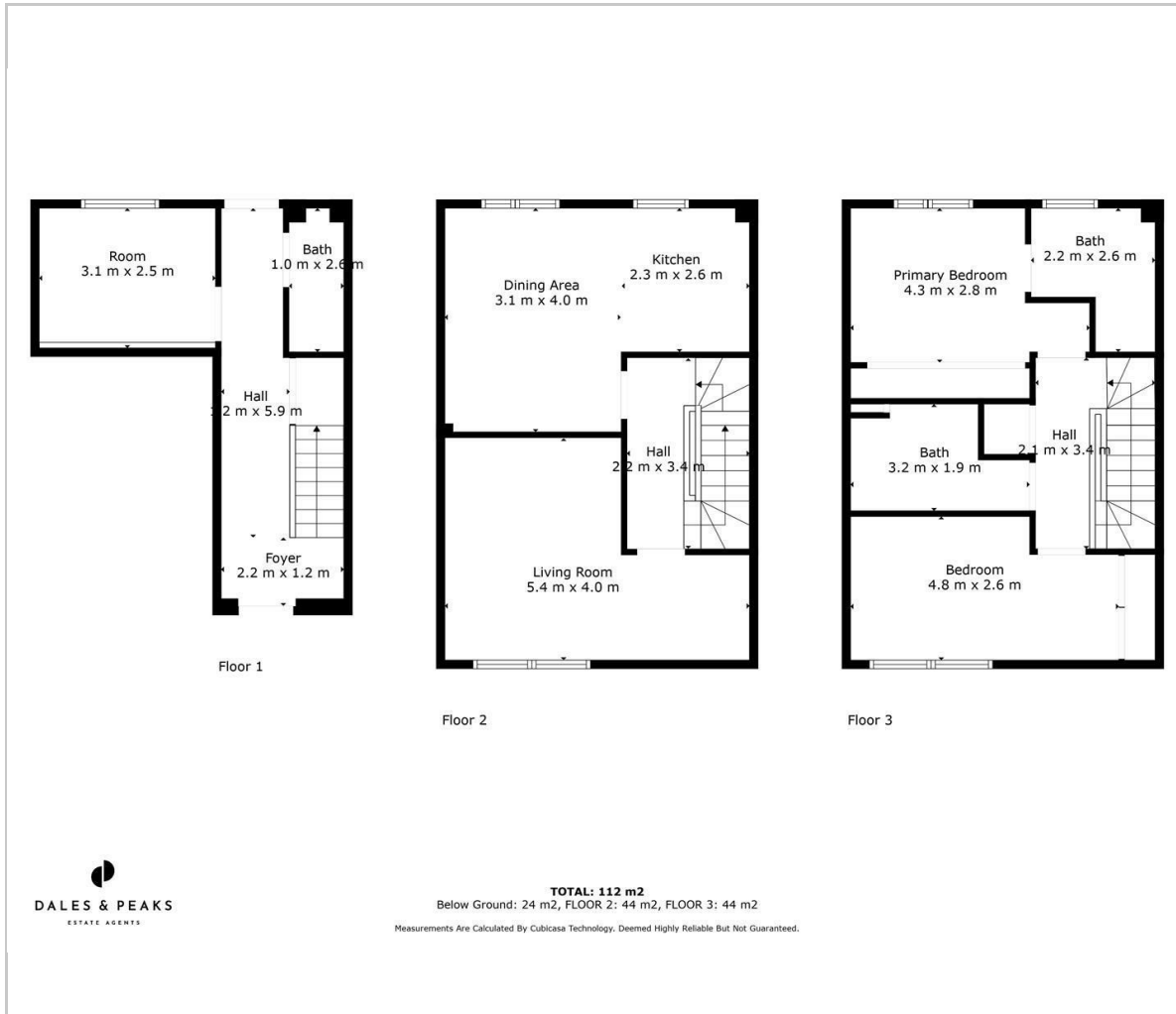
\* We are a member of The Property Ombudsman Scheme - [tpos.co.uk](http://tpos.co.uk)

\* We place all our deposits in the Deposit Protection Scheme DPS - [depositprotection.com](http://depositprotection.com)





## Floor Plan



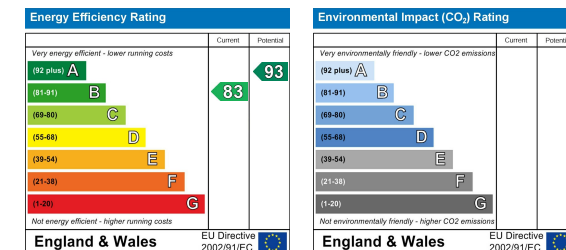
## Area Map



## Viewing

Please contact our Chesterfield Office on 01246 567540 if you wish to arrange a viewing appointment for this property or require further information.

## Energy Efficiency Graph



These particulars, whilst believed to be accurate are set out as a general outline only for guidance and do not constitute any part of an offer or contract. Intending purchasers should not rely on them as statements of representation of fact, but must satisfy themselves by inspection or otherwise as to their accuracy. No person in this firm's employment has the authority to make or give any representation or warranty in respect of the property.



131 Chatsworth Road, Chesterfield, Derbyshire, S40 2AP  
 T: 01246 567540

E: info@dalesandpeaks.co.uk  
 www.dalesandpeaks.co.uk