



**9 Malia Road**  
Tapton, S41 0UF  
£850 PCM



## 9 Malia Road

Tapton, S41 0UF

Two bedroom property situated in a quiet residential area, close to local amenities and Chesterfield town centre.

The property comprises; spacious lounge and kitchen diner with patio doors leading out to the rear garden. Two bedrooms situated on the first floor with three piece family bathroom. Private rear garden and low maintenance front lawn with garage and driveway.

For fee information please copy and paste the link below for our tenant brochure

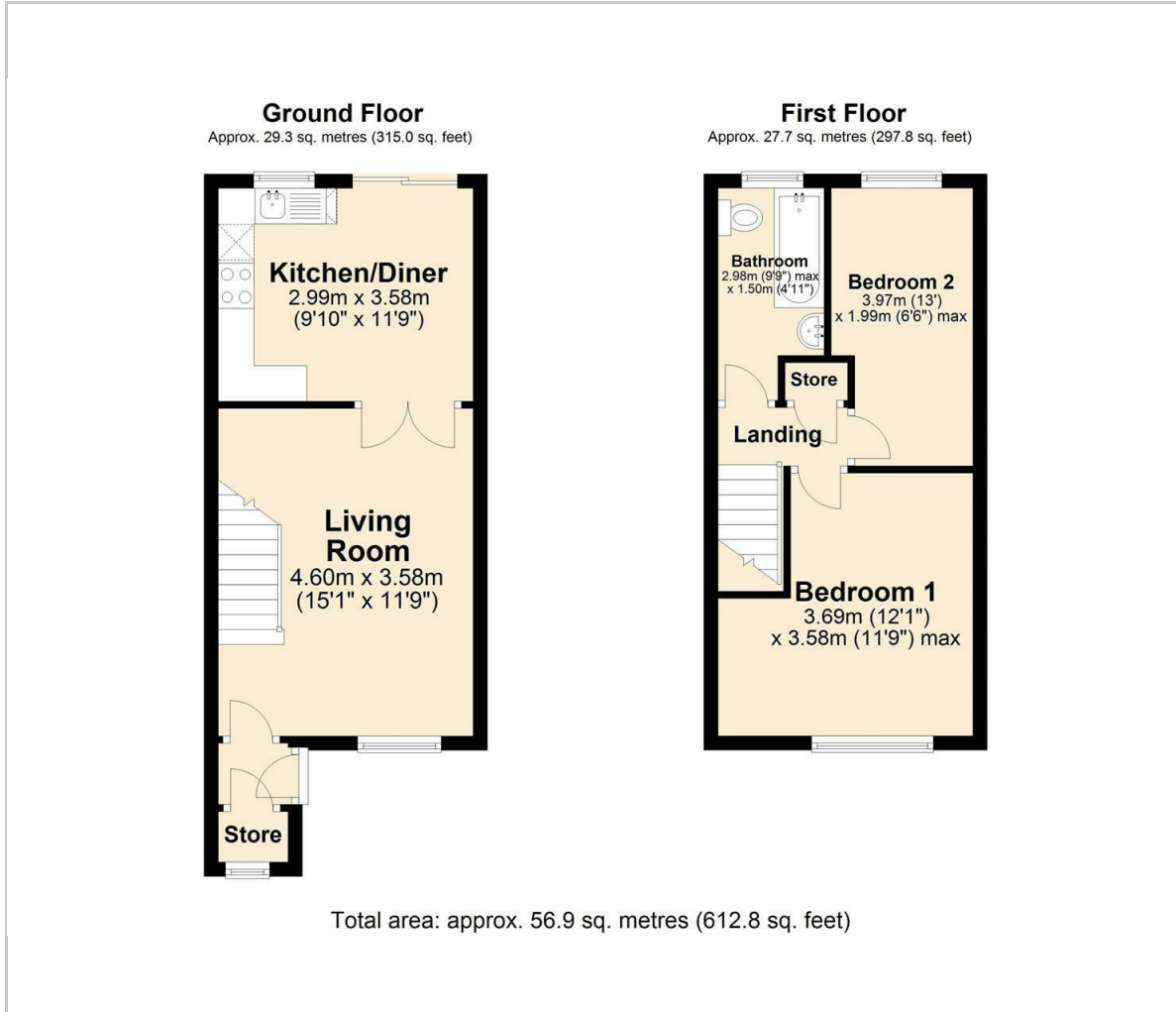
[https://ggfx-dalesandpeaks.s3.eu-west-2.amazonaws.com/i.prod/Tenants\\_broc](https://ggfx-dalesandpeaks.s3.eu-west-2.amazonaws.com/i.prod/Tenants_broc)

- \* We are a member of the Propertymark Client Money Protection Scheme - [propertymark.co.uk](http://propertymark.co.uk)
- \* We are a member of The Property Ombudsman Scheme - [tpos.co.uk](http://tpos.co.uk)
- \* We place all our deposits in the Deposit Protection Scheme DPS - [depositprotection.com](http://depositprotection.com)





## Floor Plan

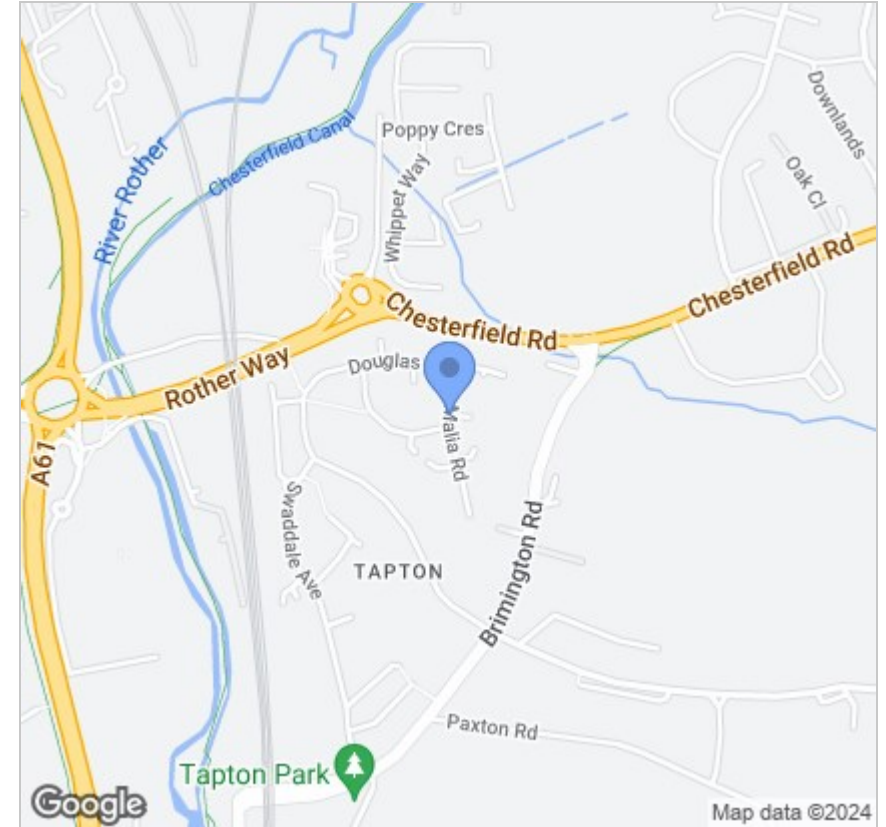


## Viewing

Please contact our Chesterfield Office on 01246 567540 if you wish to arrange a viewing appointment for this property or require further information.

These particulars, whilst believed to be accurate are set out as a general outline only for guidance and do not constitute any part of an offer or contract. Intending purchasers should not rely on them as statements of representation of fact, but must satisfy themselves by inspection or otherwise as to their accuracy. No person in this firm's employment has the authority to make or give any representation or warranty in respect of the property.

## Area Map



## Energy Efficiency Graph

