



Sidness Lodge

Stretton, Alfreton, DE55 6FE

£1,800 PCM



Sidness Lodge

Stretton, Alfreton, DE55 6FE

A stunning three bedroom barn conversion, located within the grounds of Sidness Farm and surrounded by glorious Derbyshire countryside.

The ground floor comprises; open plan living accommodation, farmhouse style solid wood kitchen, separate utility room with downstairs WC.

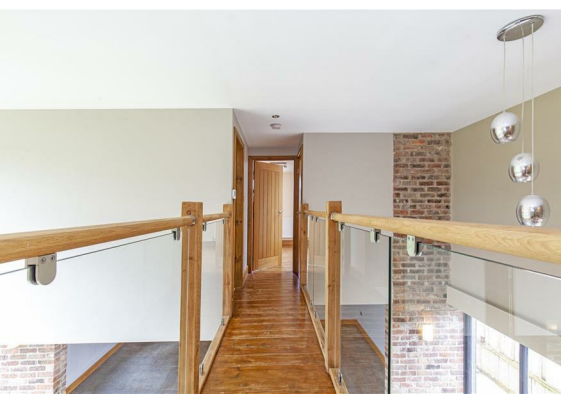
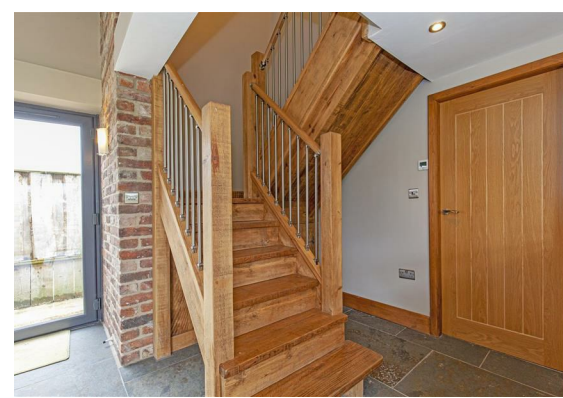
The first floor comprises; modern family bathroom with bath and separate shower as well as three generously proportioned bedrooms.

For fee information please copy and paste the link below for our tenant brochure

https://ggfx-dalesandpeaks.s3.eu-west-2.amazonaws.com/i.prod/Tenants_broc

- * We are a member of the Propertymark Client Money Protection Scheme - propertymark.co.uk
- * We are a member of The Property Ombudsman Scheme - tpos.co.uk
- * We place all our deposits in the Deposit Protection Scheme DPS - depositprotection.com





Floor Plan

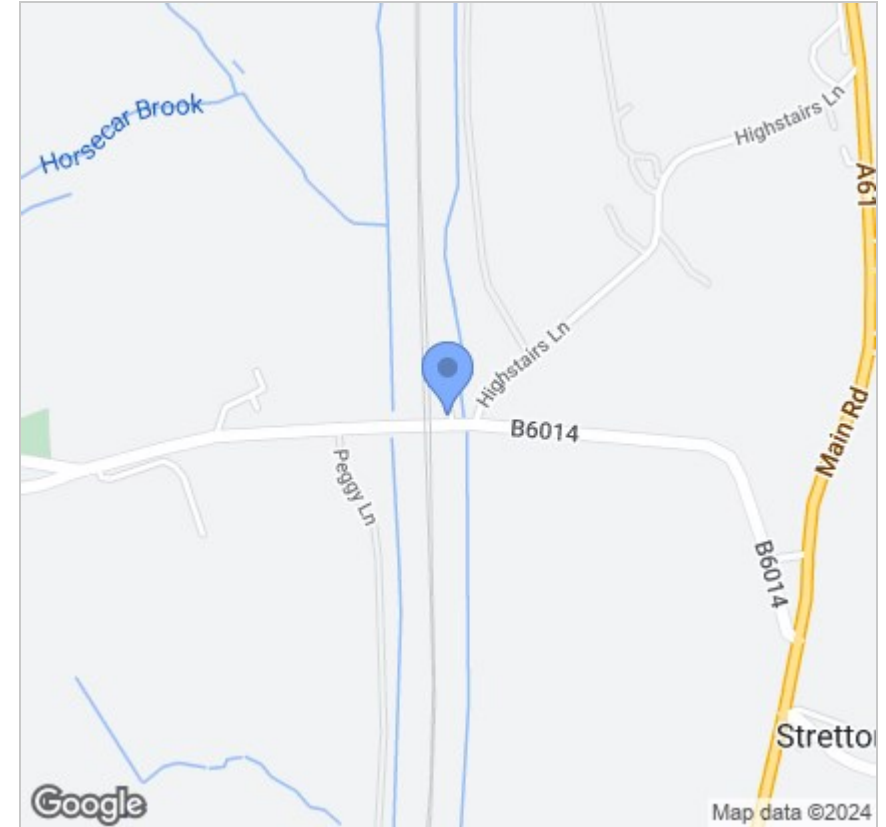


Viewing

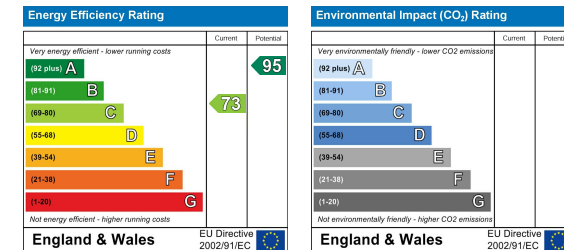
Please contact our Chesterfield Office on 01246 567540 if you wish to arrange a viewing appointment for this property or require further information.

These particulars, whilst believed to be accurate are set out as a general outline only for guidance and do not constitute any part of an offer or contract. Intending purchasers should not rely on them as statements of representation of fact, but must satisfy themselves by inspection or otherwise as to their accuracy. No person in this firm's employment has the authority to make or give any representation or warranty in respect of the property.

Area Map



Energy Efficiency Graph



131 Chatsworth Road, Chesterfield, Derbyshire, S40 2AP
T: 01246 567540



E: info@dalesandpeaks.co.uk
www.dalesandpeaks.co.uk