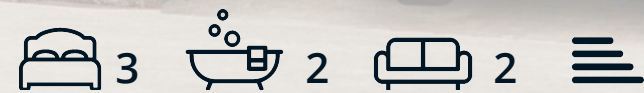




Ogston View Badger Lane

Woolley Moor, Alfretton, DE55 6FG

£725,000



Ogston View Badger Lane

Woolley Moor, Alfreton, DE55 6FG

Welcome to Ogston View, a distinctively unique development of 4 luxury contemporary barn style new build homes, built by locally renowned home builder Briddon Homes, in the beautiful rural village setting of Woolley Moor.

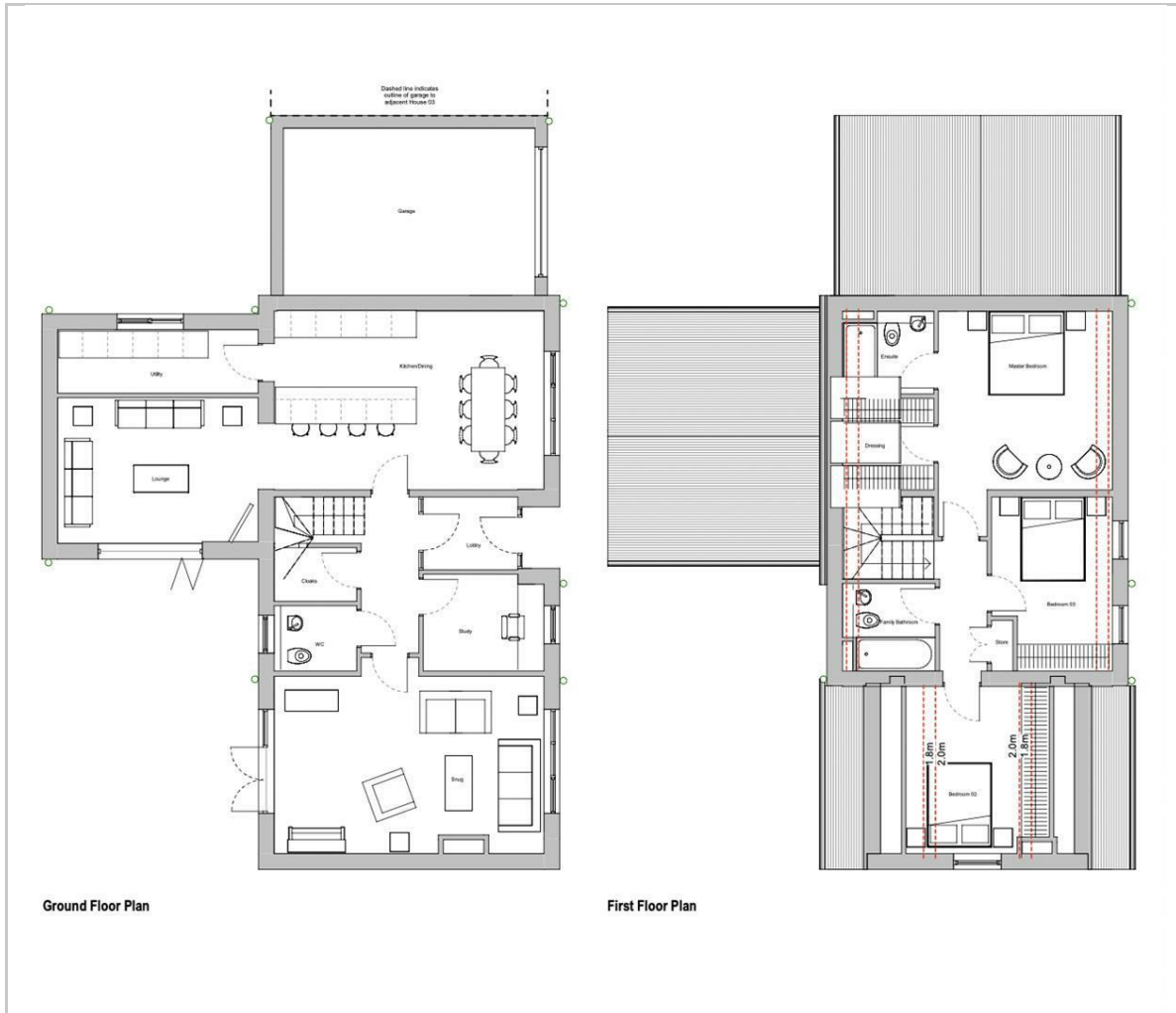
Sustainably built using natural stone and the highest of quality materials, Ogston View is constructed taking carbon emissions and efficiency into consideration. Each home will be fitted with solar panels and aluminium windows and doors as standard.

The Reach offers a spacious 2065 sqft of accommodation over 2 storeys, Designed around social space, flexibility and ideal for modern life, the property features a social, open plan Karl Benz dining kitchen with adjoining family lounge, a further separate formal reception room, ample work-from-home space with a designated ground floor study, spacious bedrooms including the master suite with dressing room and 2 stylish bathrooms including 1 en-suite. The Reach has a large rear garden, ample off road parking and an adjoining single garage.

For full spec details, get in touch.



Floor Plan



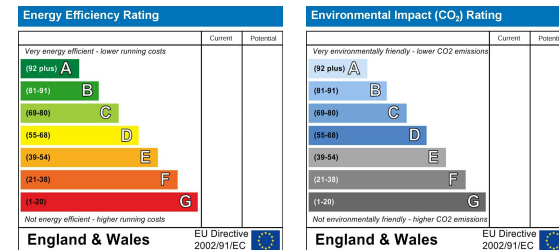
Area Map



Viewing

Please contact our Chesterfield Office on 01246 567540 if you wish to arrange a viewing appointment for this property or require further information.

Energy Efficiency Graph



These particulars, whilst believed to be accurate are set out as a general outline only for guidance and do not constitute any part of an offer or contract. Intending purchasers should not rely on them as statements of representation of fact, but must satisfy themselves by inspection or otherwise as to their accuracy. No person in this firm's employment has the authority to make or give any representation or warranty in respect of the property.



131 Chatsworth Road, Chesterfield, Derbyshire, S40 2AP
T: 01246 567540

E: info@dalesandpeaks.co.uk
www.dalesandpeaks.co.uk