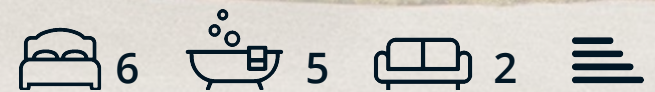




Ogston View Badger Lane

Woolley Moor, Alfreton, DE55 6FG

£895,000



Ogston View Badger Lane

Woolley Moor, Alfreton, DE55 6FG

Welcome to Ogston View, a distinctively unique development of 4 luxury contemporary barn style new build homes, built by locally renowned home builder Briddon Homes, in the beautiful rural village setting of Woolley Moor.

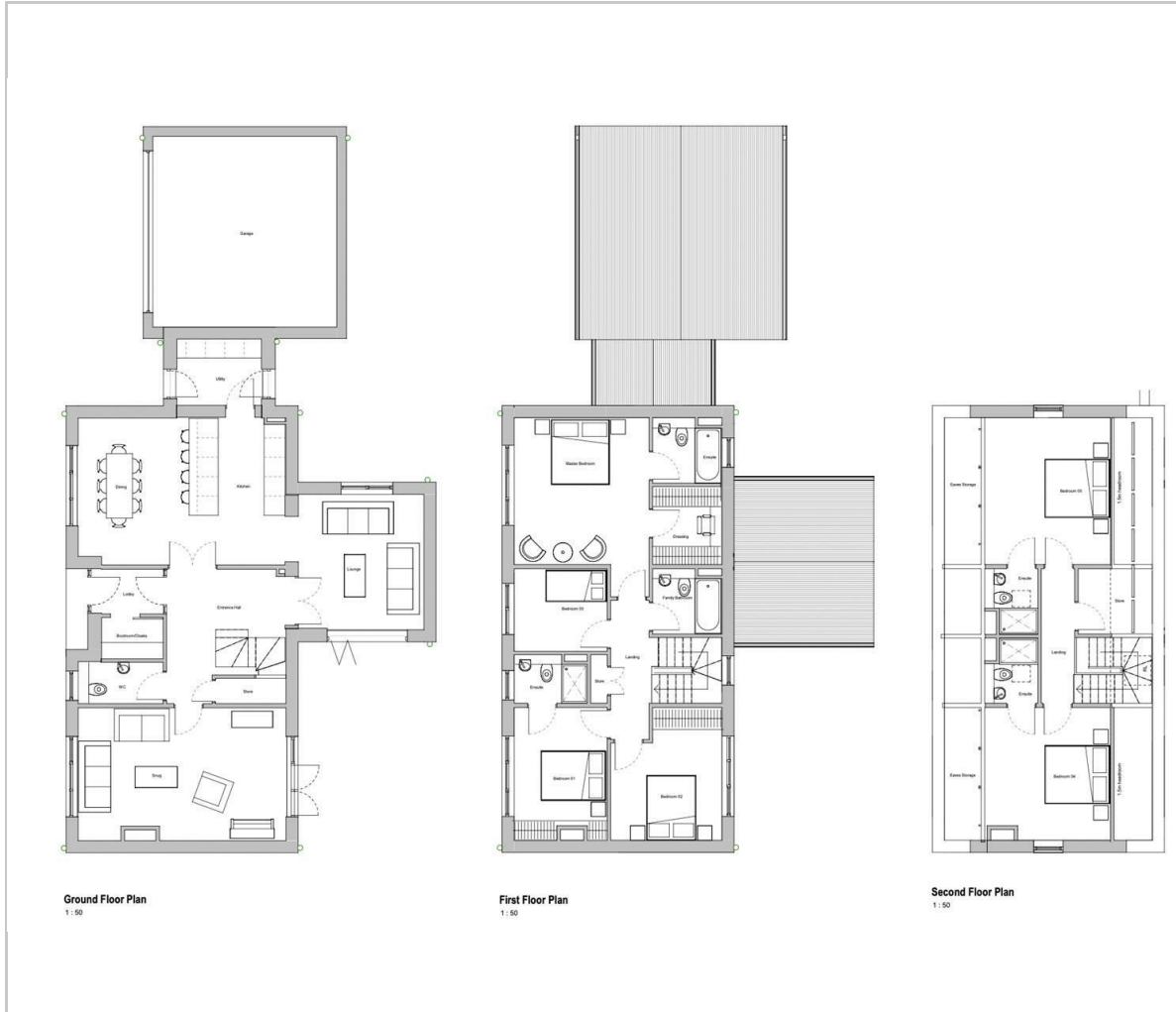
Sustainably built using natural stone and the highest of quality materials, Ogston View is constructed taking carbon emissions and efficiency into consideration. Each home will be fitted with solar panels and aluminium windows and doors as standard.

Spinnaker House offers 3037 sqft of beautifully designed accommodation over 3 storeys, the property features a Karl Benz kitchen with hi-spec integrated appliances, a flexible layout with 2 formal reception rooms plus an open-plan dining room, 6 generously proportioned bedrooms and 5 bathrooms including 4 en-suite shower rooms. The impressive master suite features a dressing room and en-suite bathroom. Spinnaker House occupies its own private plot with off road parking for multiple vehicles and an adjoining double garage.

For full spec details, get in touch.



Floor Plan



Viewing

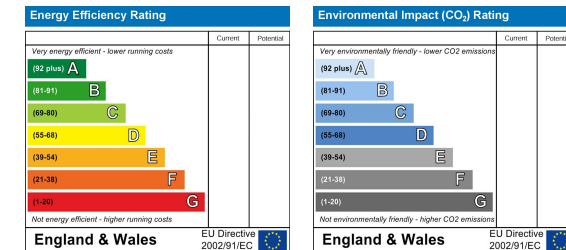
Please contact our Chesterfield Office on 01246 567540 if you wish to arrange a viewing appointment for this property or require further information.

These particulars, whilst believed to be accurate are set out as a general outline only for guidance and do not constitute any part of an offer or contract. Intending purchasers should not rely on them as statements of representation of fact, but must satisfy themselves by inspection or otherwise as to their accuracy. No person in this firm's employment has the authority to make or give any representation or warranty in respect of the property.

Area Map



Energy Efficiency Graph



131 Chatsworth Road, Chesterfield, Derbyshire, S40 2AP
T: 01246 567540

E: info@dalesandpeaks.co.uk
www.dalesandpeaks.co.uk