



2 Firvale Road

Walton, Chesterfield, S42 7NN

£210,000



2 Firvale Road

Walton, Chesterfield, S42 7NN

Situated in the exceptionally sought-after Chesterfield suburb of Walton, on the flat and within a short walk of local shops, amenities and on a bus route, is this recently modernised 2 bedroom semi detached bungalow, occupying a larger than average plot providing scope to extend, subject to relevant planning consent and benefitting from 2 driveways, including a large block paved driveway to the front of the property, a detached single garage and a further gated driveway at the bottom of the garden which would be suitable for storage of caravan or mobile home.

Offering 452 sqft of accommodation, the property is gas central heated and features a modern kitchen with integrated oven, dishwasher, fridge/freezer and electric hob, a tastefully decorated dining lounge, bathroom with large walk-in shower and 2 good-sized bedrooms.

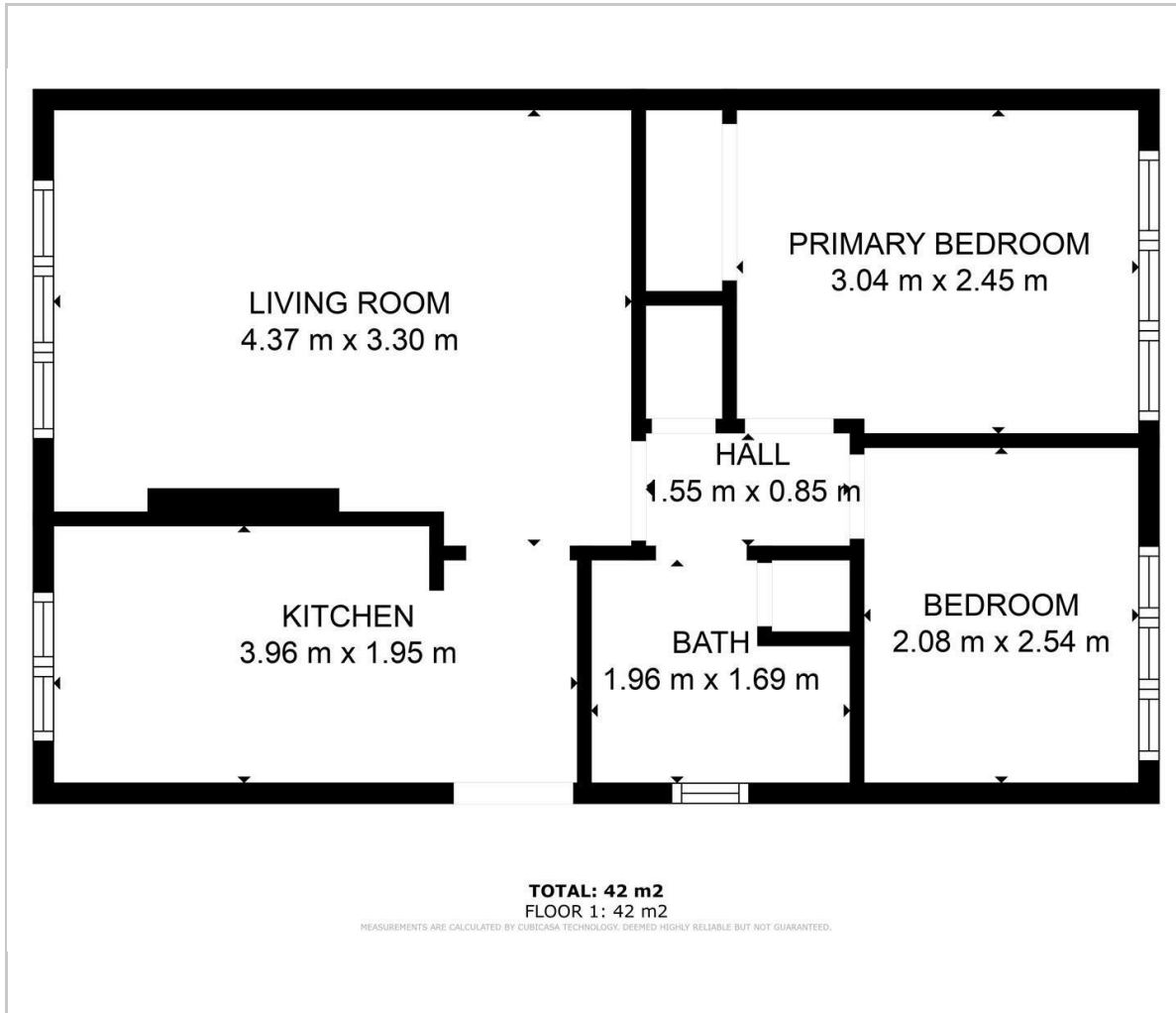
Externally the property boasts a wrap around garden with block paved driveway to the front and open views over Firvale Road, detached single garage, lawned garden to the rear and a second gated driveway with hardstanding area at the bottom of the garden.

**Dales and Peaks ForwardMove
PLEASE READ**





Floor Plan

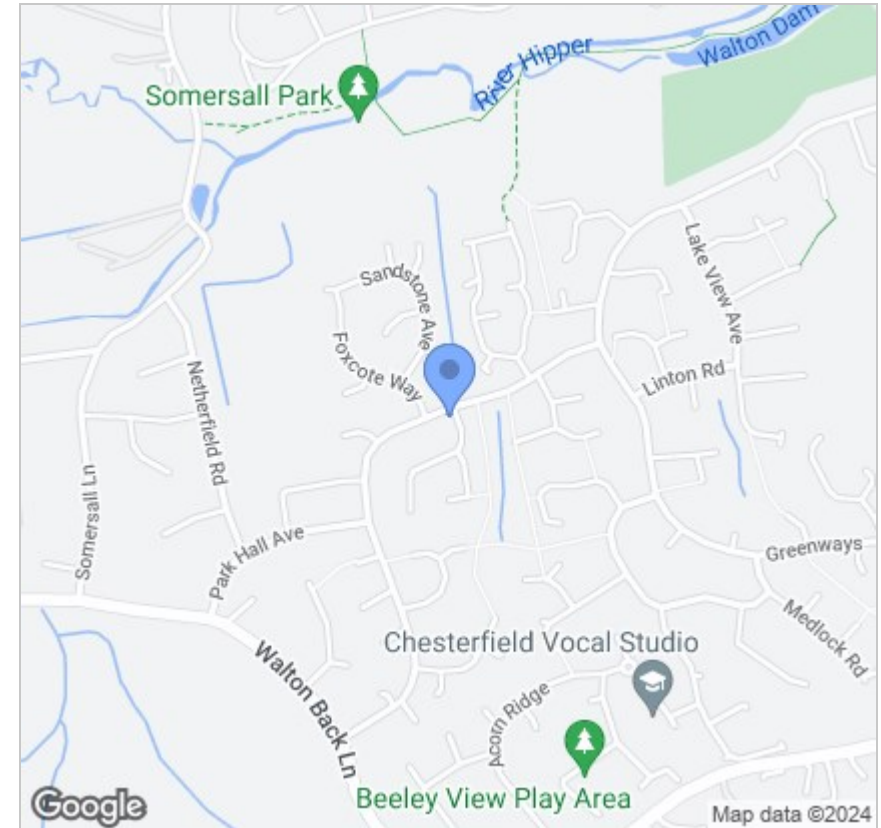


Viewing

Please contact our Chesterfield Office on 01246 567540 if you wish to arrange a viewing appointment for this property or require further information.

These particulars, whilst believed to be accurate are set out as a general outline only for guidance and do not constitute any part of an offer or contract. Intending purchasers should not rely on them as statements of representation of fact, but must satisfy themselves by inspection or otherwise as to their accuracy. No person in this firm's employment has the authority to make or give any representation or warranty in respect of the property.

Area Map



Energy Efficiency Graph

