



Plot 82 Curzon Park

Wingerworth, Chesterfield, S42 6GR

£409,500



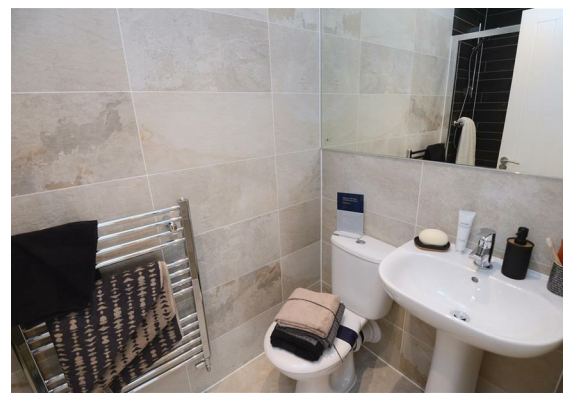
Plot 82 Curzon Park

Wingerworth, Chesterfield, S42

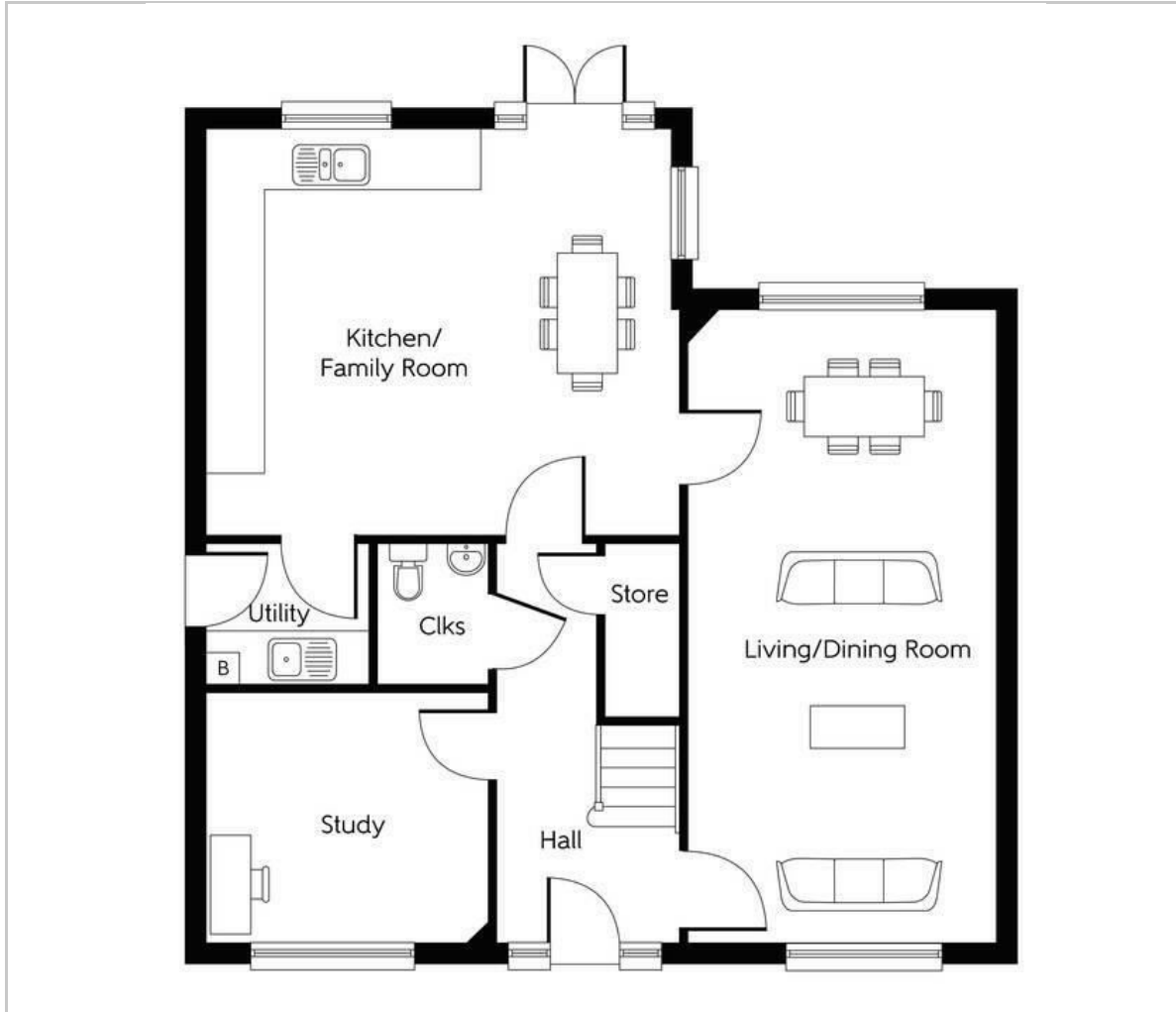
The Laughton is a 4-bedroom detached family home which provides modern, open-plan living accommodation, including an generous kitchen and family area with adjoining utility room, a separate living and dining area, a front-facing study, an en suite to bedroom 1 and a modern family bathroom.

Located in the pretty village of Wingerworth, on the outskirts of Chesterfield and neighbouring the Peak District National Park, Curzon Park is situated perfectly to enjoy an abundance of countryside walks, ideal for commuting and within close proximity to local amenities.





Floor Plan

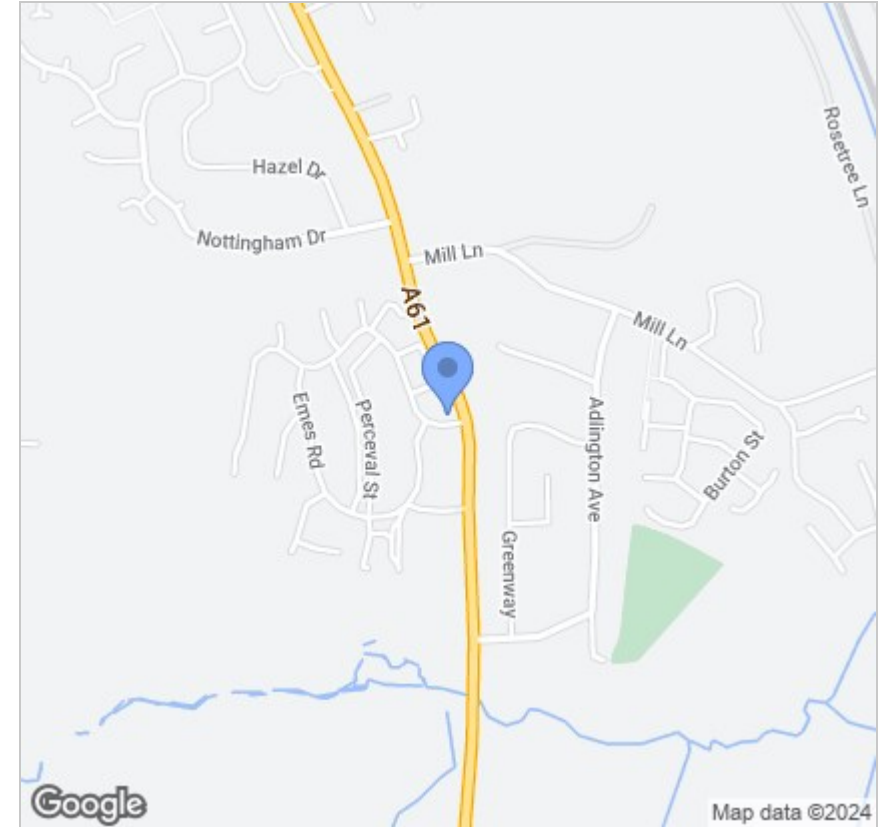


Viewing

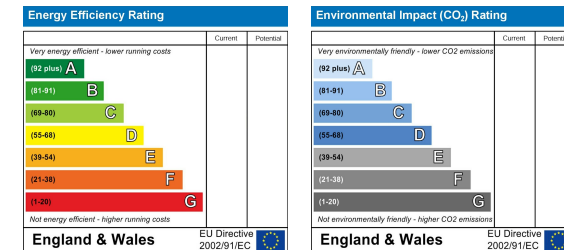
Please contact our Chesterfield Office on 01246 567540 if you wish to arrange a viewing appointment for this property or require further information.

These particulars, whilst believed to be accurate are set out as a general outline only for guidance and do not constitute any part of an offer or contract. Intending purchasers should not rely on them as statements of representation of fact, but must satisfy themselves by inspection or otherwise as to their accuracy. No person in this firm's employment has the authority to make or give any representation or warranty in respect of the property.

Area Map



Energy Efficiency Graph



131 Chatsworth Road, Chesterfield, Derbyshire, S40 2AP
T: 01246 567540

E: info@dalesandpeaks.co.uk
www.dalesandpeaks.co.uk