



## Apartment 17 Belmont Park Holymoorside Road

Holymoorside, Chesterfield, S42 7DN

Guide Price £290,000



## Apartment 17 Belmont Park

Holymoorside, Chesterfield, S42

75M

Located in the prestigious Belmont Park development, in the highly sought after village of Holymoorside on the outskirts of Chesterfield Town Centre and neighbouring the Peak District National Park is this spacious and beautifully appointed 2 bedroom apartment, enjoying a second floor position with scenic views across glorious Derbyshire countryside.

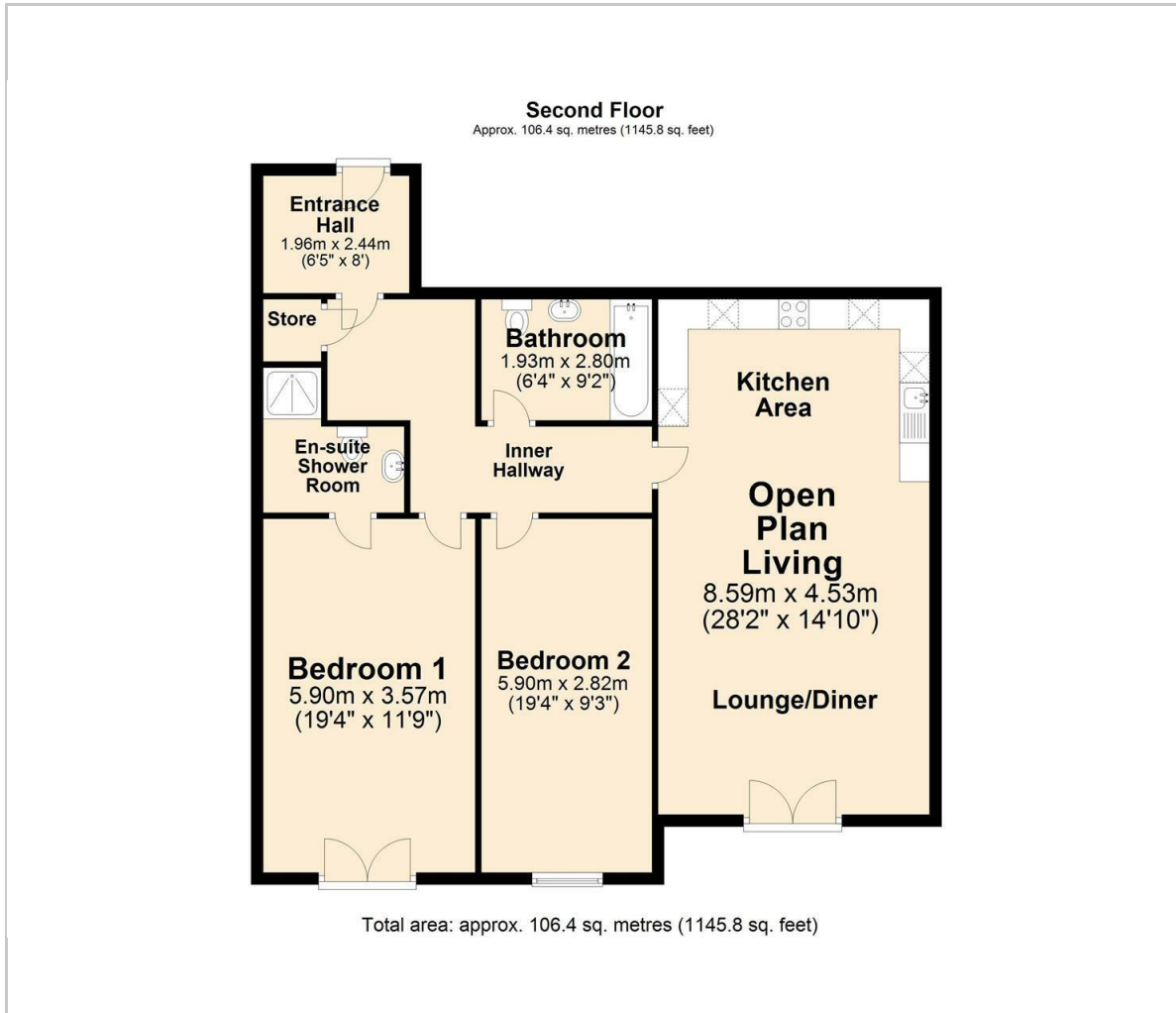
£290,000 - £300,000 (Guide price)

Offering a spacious 1145 sqft of accommodation over 1 storey, this stylish apartment features a modern kitchen with high-spec Neff integrated appliances & quartz worktops, an open plan living & dining space with Juliet double doors filling the space with natural light and allowing the apartment to enjoy the surrounding scenery; as well as 2 generously proportioned double bedrooms, 2 bathrooms including the principle ensuite shower room, a large central hallway and entrance foyer / boot room.





## Floor Plan

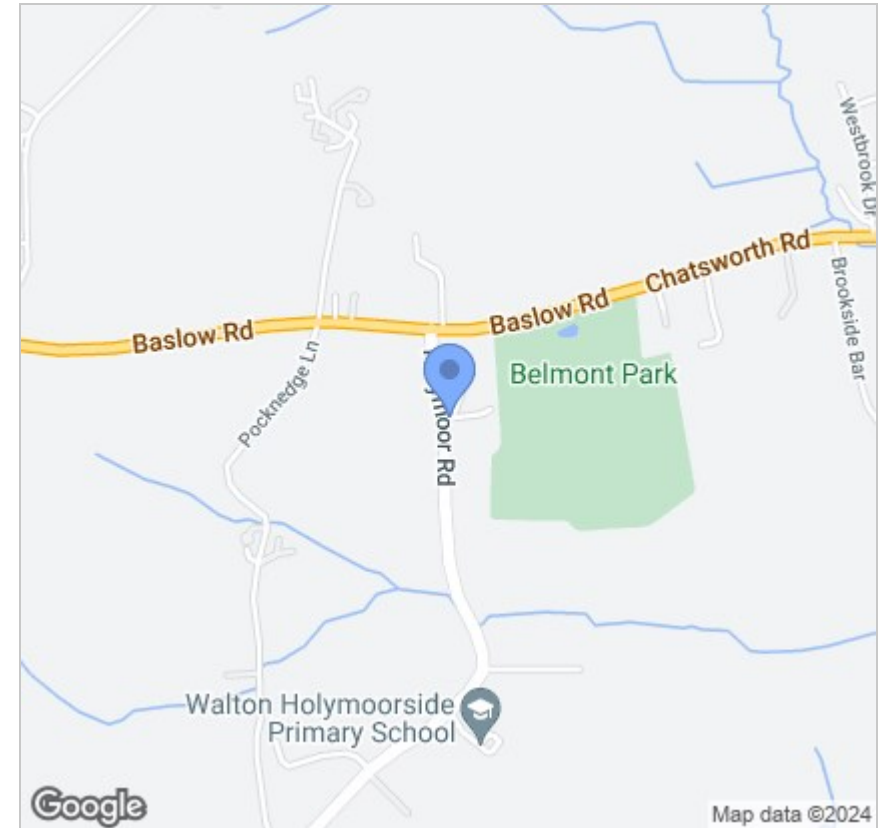


## Viewing

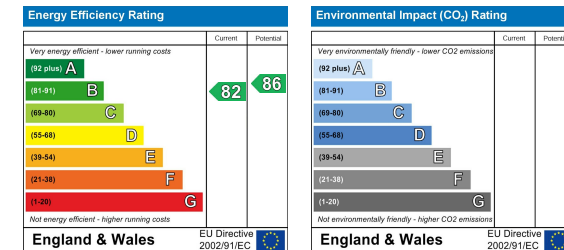
Please contact our Chesterfield Office on 01246 567540 if you wish to arrange a viewing appointment for this property or require further information.

These particulars, whilst believed to be accurate are set out as a general outline only for guidance and do not constitute any part of an offer or contract. Intending purchasers should not rely on them as statements of representation of fact, but must satisfy themselves by inspection or otherwise as to their accuracy. No person in this firm's employment has the authority to make or give any representation or warranty in respect of the property.

## Area Map



## Energy Efficiency Graph



131 Chatsworth Road, Chesterfield, Derbyshire, S40 2AP  
T: 01246 567540



E: info@dalesandpeaks.co.uk  
www.dalesandpeaks.co.uk