



LANG TOWN  
& COUNTRY

9 Brinchcombe Mews, Saltram Meadow, Plymouth, Devon, PL9 7FB

  
LANG TOWN  
& COUNTRY  
SALES



# £195,000

Located within the sought-after Saltram Meadow area of Plymouth, is a purpose-built two bedroom coach house offering light and well-proportioned accommodation throughout.

The property boasts a spacious open plan reception room incorporating a fitted kitchen, creating an ideal space for modern living and entertaining. There are two comfortable double bedrooms, both offering ample space for furniture, alongside a contemporary shower room.

Externally, the property benefits from its own private garden, perfect for outdoor relaxation, as well as a garage providing secure parking or useful storage. This attractive home would suit a range of buyers, including first-time purchasers, professionals or those seeking a low-maintenance investment opportunity. This family home is ideally located close to popular schooling and amenities comprising Morrison's Superstore, popular schooling, Doctor's, and dental surgeries. Transport links provide access to the Broadway Shopping Centre, the vibrant city centre of Plymouth and the beautiful South Hams countryside and coastline. Recreational facilities can be found at Staddon Heights Golf Course, Jennycliff and the Mount Batten Water Sports Centre.

The property has gas central heating and uPVC double glazing. A viewing should be arranged at the earliest opportunity to appreciate the accommodation and location that is on offer. There is an EV charging point and also CCTV at the property.

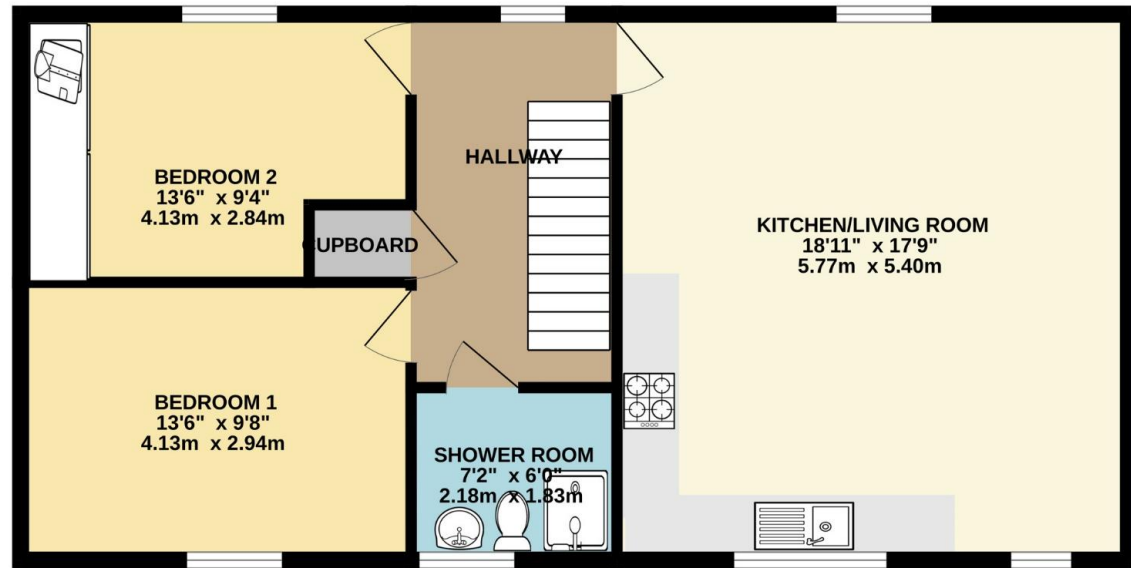
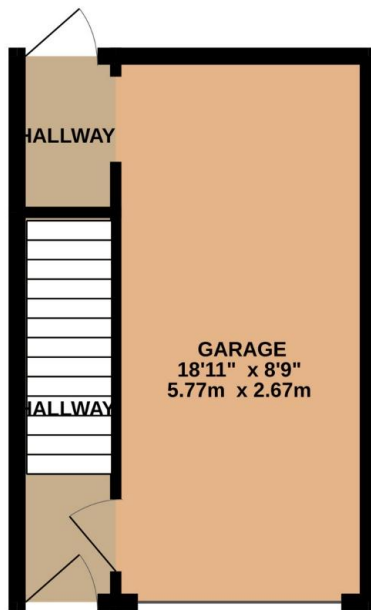
The development is run by a management company and there is a yearly charge of £79.00 for the maintenance and upkeep of the estate. The details of which should be confirmed by your solicitor.



To view this property call Lang Town & Country Estate Agents on **01752 456000**.







TOTAL FLOOR AREA : 958 sq.ft. (89.0 sq.m.) approx.  
 Measurements are approximate. Not to scale. Illustrative purposes only  
 Made with Metropix ©2026

