



18 Charlbury Drive, Saltram Meadow, Plymouth, Devon, PL9 7GD



£335,000



18 Charlbury Drive is a 3-bedroom detached home situated on the edge of the sought-after Saltram Meadow development, this spacious three-bedroom detached home offers a perfect blend of space for a growing family, located in a convenient location.

The property boasts a generous dual-aspect lounge, flooding the room with natural light, and a modern kitchen/diner ideal for family meals and entertaining with a range of integrated appliances, and a separate utility room that provides added practicality and storage. This property benefits from Air conditioning in the living room and main bedroom with hot and cold functions.

Upstairs, you'll find three spacious double bedrooms, including a master bedroom with en-suite shower room. The contemporary 3-piece family bathroom serves the remaining bedrooms.

Outside, enjoy a low-maintenance south-facing garden with artificial grass and a decked area – perfect for relaxing or entertaining. Providing direct access from the garden there is a spacious garage and private driveway with electric vehicle charging point.

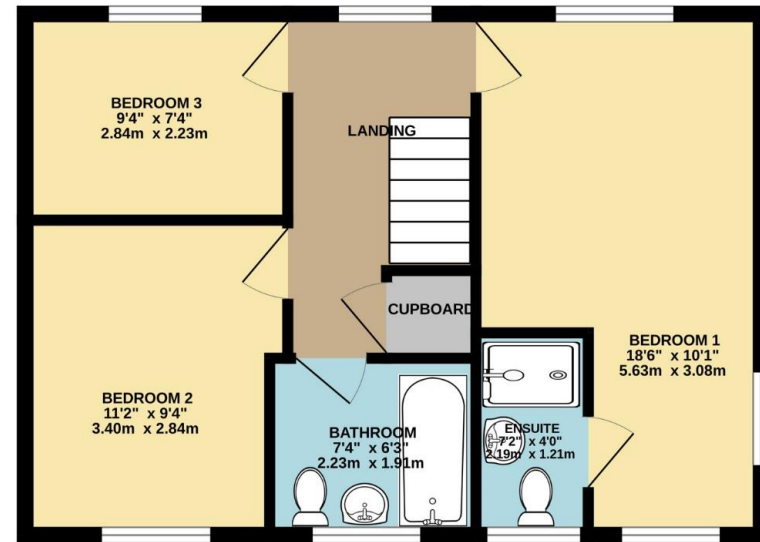
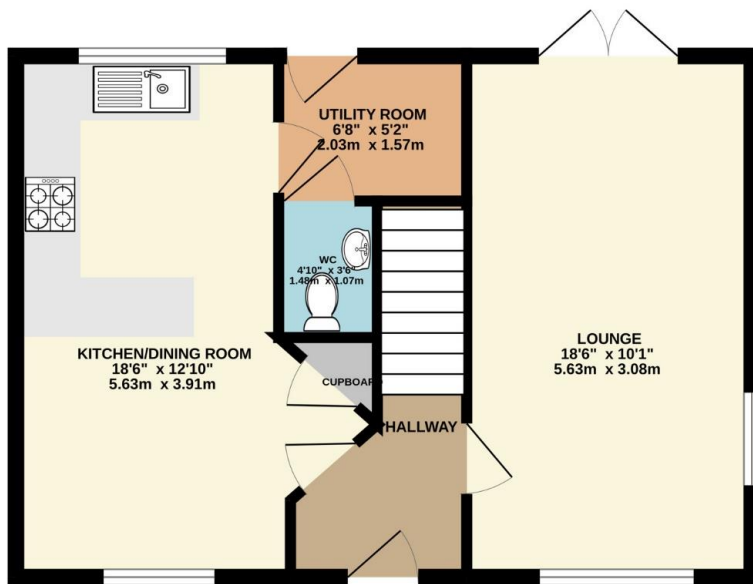
Set alongside the National Trust's Saltram Estate, the development provides direct access to scenic riverside walks along the Plym Estuary and Saltram Woods, ideal for family strolls, cycling, and dog walking. The development has a modern primary school and is served by a range of amenities that can be found in close proximity.

The development is run by a management company and there is a yearly charge for the maintenance and upkeep of the estate. The details of which should be confirmed by your solicitor.



To view this property call Lang Town & Country Estate Agents on **01752 456000**.





TOTAL FLOOR AREA : 964 sq.ft. (89.6 sq.m.) approx.
Measurements are approximate. Not to scale. Illustrative purposes only
Made with Metropix ©2025



Lang Town & Country
6 The Broadway
Plymstock
Plymouth
PL9 7AU
Tel: 01752 456000
Email: plymstock@langtownandcountry.com
www.langtownandcountry.com

Lang Town & Country endeavour to ensure the accuracy of property details produced and displayed, we have not tested any apparatus, equipment, fixtures, fittings or services and so cannot verify that they are connected, in working order or fit for purpose. A buyer must check the availability of any property and make an appointment to view before embarking on any journey to see a property.

