



17 Underlane, Plympton, Plymouth, Devon, PL7 1QU

Price £300,000

Situated in the heart of Plympton is this beautifully extended bay-fronted semi-detached period property offers a perfect blend of character and modern family living.

Upon entering, you are welcomed by a spacious entrance hallway that has stairs rising to the first floor and provides access to the ground floor accommodation where you will find a bay fronted lounge, ideal for relaxing evenings with an open fire. The heart of the home lies in the generous kitchen/dining/family room a versatile open-plan space perfect for entertaining or spending quality time with family. A separate utility room and convenient downstairs WC complete the ground floor.

Upstairs, the property boasts three bedrooms and a modern, white three-piece family bathroom suite.

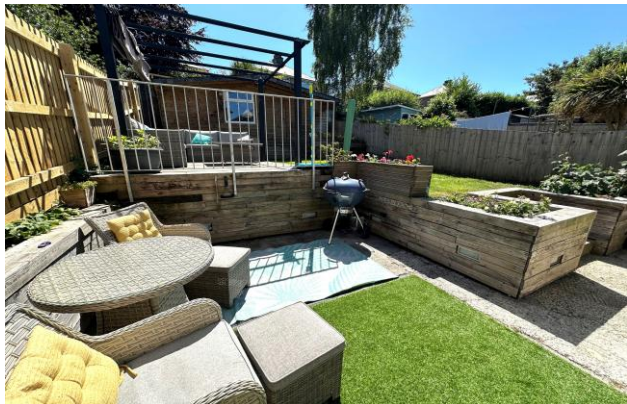
Outside, the home continues to impress. The front garden is generously sized, setting the house back from the road and enhancing its curb appeal. To the rear, a private and low-maintenance south-facing garden provides a sunny and peaceful outdoor retreat.

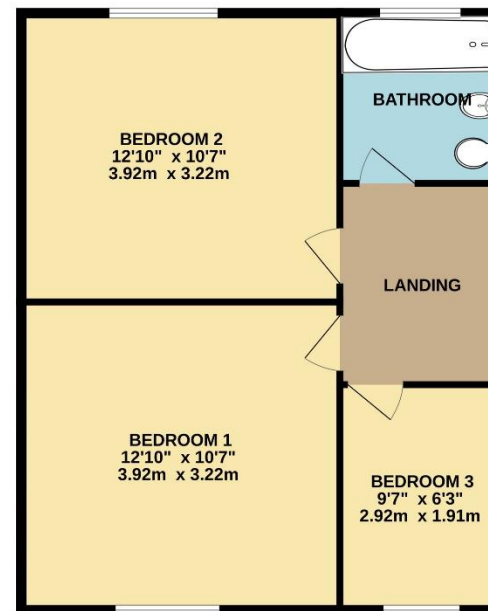
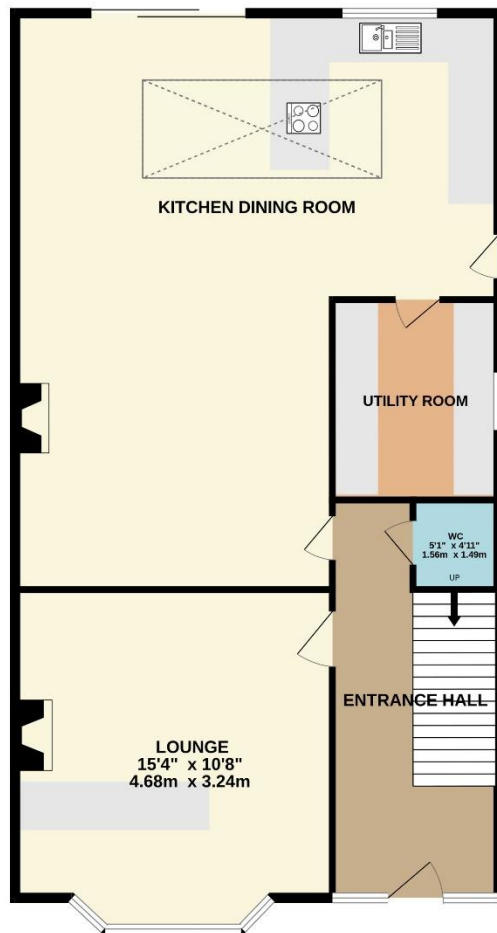
This wonderful home is ideal for families or anyone seeking space, character, and convenience in a sought-after Plympton location.

To view this property call Lang Town & Country Estate Agents on 01752 456000.

www.langtownandcountry.com







Measurements are approximate. Not to scale. Illustrative purposes only
Made with Metropix ©2025

Lang Town & Country

6 The Broadway

Plymstock

Plymouth

PL9 7AU

Tel: 01752 456000

Email: plymstockoffice@langtownandcountry.com

Lang Town & Country endeavour to ensure the accuracy of property details produced and displayed, we have not tested any apparatus, equipment, fixtures, fittings or services and so cannot verify that they are connected, in working order or fit for purpose. A buyer must check the availability of any property and make an appointment to view before embarking on any journey to see a property.

