



66 Larkham Lane, Plympton, Plymouth, Devon, PL7 4PN



Price £275,000

Situated in the sought-after residential area of Woodford, this well-presented three-bedroom end-terraced home offers an ideal opportunity for first-time buyers or growing families alike.

The ground floor welcomes you with an entrance hallway leading to a lounge featuring a charming fireplace. There is a separate dining area, and the kitchen is fitted with a range of wall and base units for ample storage. Completing the downstairs layout is a conservatory overlooking the garden and a convenient W.C.

Upstairs, the property boasts three bedrooms. The main bedroom benefits from a modern en-suite shower room with wash hand basin and W.C., while the remaining two bedrooms are served by a contemporary family bathroom.

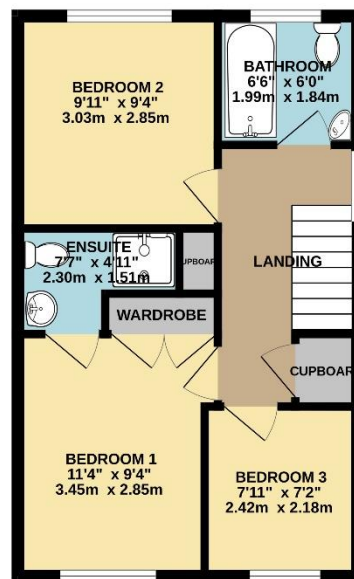
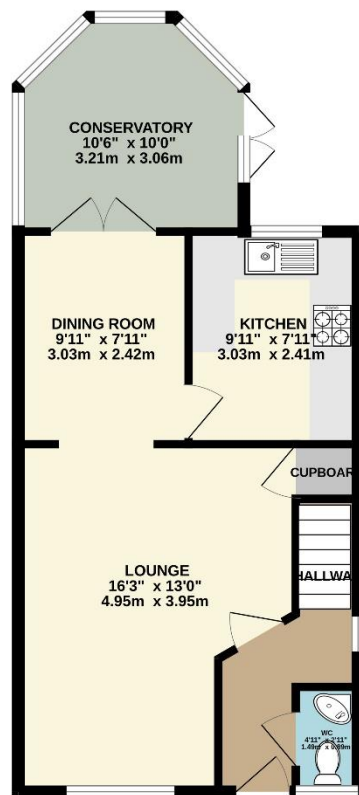
Externally, the generous rear garden is mainly laid to lawn with a patio seating area—ideal for summer gatherings. The rear gate leads directly to an allocated parking space for added convenience.

This delightful home is ready to move into and truly must be viewed to be appreciated. Early viewing is highly recommended.



To view this property call Lang Town & Country Estate Agents on **01752 456000**.





TOTAL FLOOR AREA: 927 sq.ft. (86.1 sq.m.) approx.
Measurements are approximate. Not to scale. Illustrative purposes only.
Made with Metropix 62025



Lang Town & Country
6 The Broadway
Plymstock
Plymouth
PL9 7AU

Tel: 01752 456000

Email: plymstock@langtownandcountry.com

www.langtownandcountry.com

Lang Town & Country endeavour to ensure the accuracy of property details produced and displayed, we have not tested any apparatus, equipment, fixtures, fittings or services and so cannot verify that they are connected, in working order or fit for purpose. A buyer must check the availability of any property and make an appointment to view before embarking on any journey to see a property.

