



47 South Hill, Hooe, Plymouth, PL9 9PT

Price £225,000



Positioned on a generous corner plot, this beautifully proportioned three-bedroom end-of-terrace home offers an abundance of space, making it ideal for a growing family. Boasting well-balanced accommodation throughout, the property enjoys gardens to the front, rear, and side, providing ample outdoor space for relaxation and entertaining.

The heart of the home is a bright and airy dual-aspect lounge, featuring French doors that open onto the rear garden, creating a seamless indoor-outdoor flow. A separate dining room offers the perfect space for family meals and entertaining, while the kitchen completes the ground floor.

Upstairs, three well-sized bedrooms provide comfortable living arrangements, complemented by a wet room and a separate WC.

Ideally located near the stunning Mount Batten and Jennycliff coastline, this home offers easy access to the breath-taking Southwest Coast Path. The village itself boasts a range of amenities, including a well-regarded primary school, a general store and off-licence, as well as popular dining options such as an Indian restaurant and takeaway.

This charming family home must be seen to be fully appreciated.

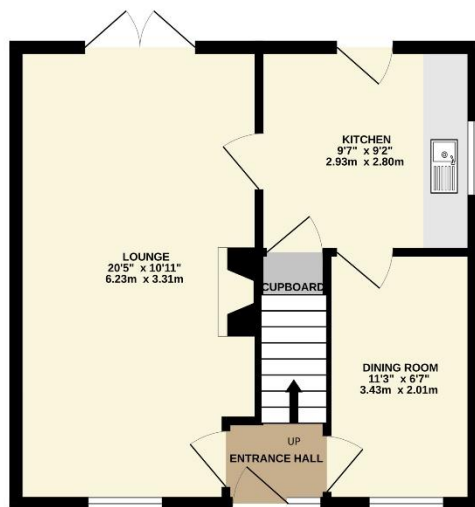
There are a wide array of amenities situated close by which include the picturesque coastline of Mount Batten, Jennycliff and Bovisand Beaches and easy access to the South West coastal footpath. There is a well-regarded primary school, general store/newsagent, and numerous restaurants and public houses. Regular transport links provide access to Plymouth and the vibrant City Centre of Plymouth. Mount Batten offers a water taxi service providing access to the historic Barbican waterfront. Further recreational facilities include Fort Stamford, Staddon Heights Golf Course and the Mount Batten Water Sports Centre.



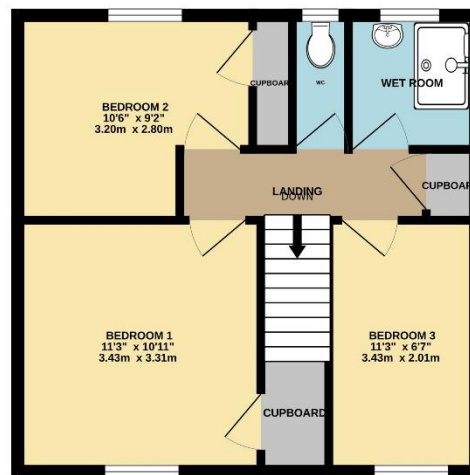
To view this property call Lang Town & Country Estate Agents on **01752 256000**



GROUND FLOOR
412 sq.ft. (38.3 sq.m.) approx.



1ST FLOOR
419 sq.ft. (38.9 sq.m.) approx.



TOTAL FLOOR AREA: 831 sq.ft. (77.2 sq.m.) approx.
Measurements are approximate. Not to scale. Illustrative purposes only
Made with MetroPix ©2025



Lang Town & Country
6 Mannamead Road
Plymouth
PL4 7AA

Tel: 01752 256000

Email: property@langtownandcountry.com

www.langtownandcountry.com

Lang Town & Country endeavour to ensure the accuracy of property details produced and displayed, we have not tested any apparatus, equipment, fixtures, fittings or services and so cannot verify that they are connected, in working order or fit for purpose. A buyer must check the availability of any property and make an appointment to view before embarking on any journey to see a property.

