



50 Wembury Road, Elburton, Plymouth, Devon, PL9 8HF

Price £280,000



Located in the heart of Elburton Village, this spacious three-bedroom semi-detached family home is well-positioned to take advantage of a wide range of nearby amenities, including well-regarded primary and secondary schools. The property offers light and airy accommodation with an elevated, south-facing aspect.

On the ground floor, an entrance porch leads into the hall, where stairs rise to the first floor and access is provided to the ground-floor accommodation. Here, you will find a lounge with a feature fireplace, a separate dining room with patio doors leading to the conservatory, and a fitted kitchen.

On the first floor, there are three bedrooms and a three-piece bathroom suite.

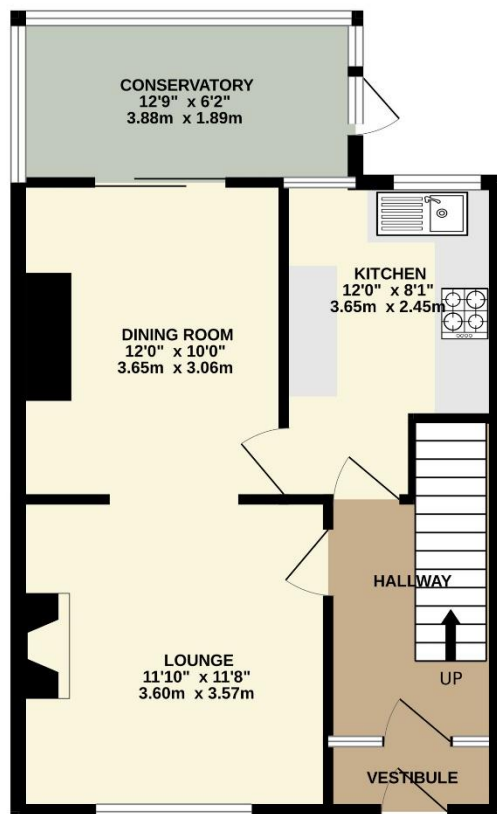
To the front of the property, there is off-road parking, along with steps leading to the front entrance and garden. The generous rear garden is laid out in two sections. The seating area is perfect for entertaining family and friends, offering a tranquil retreat for relaxation.



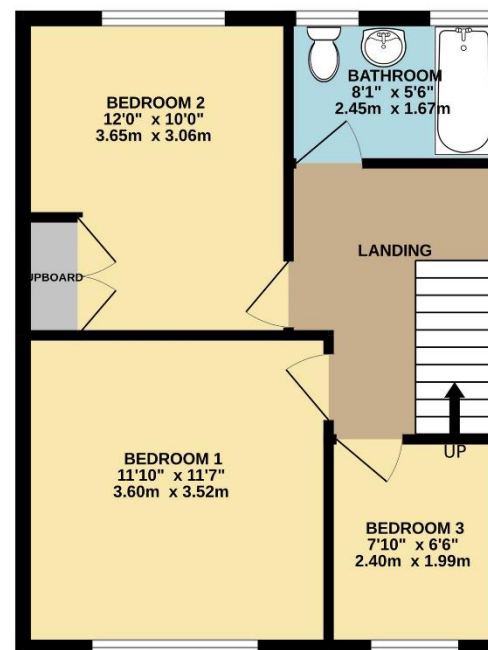
To view this property call Lang Town & Country Estate Agents on **01752 456000**.



GROUND FLOOR
494 sq.ft. (45.9 sq.m.) approx.



1ST FLOOR
430 sq.ft. (39.9 sq.m.) approx.



TOTAL FLOOR AREA : 924 sq.ft. (85.8 sq.m.) approx.
Measurements are approximate. Not to scale. Illustrative purposes only
Made with Metropix ©2025



Lang Town & Country
6 The Broadway
Plymstock
Plymouth
PL9 7AU

Tel: 01752 456000

Email: plymstock@langtownandcountry.com

www.langtownandcountry.com

Lang Town & Country endeavour to ensure the accuracy of property details produced and displayed, we have not tested any apparatus, equipment, fixtures, fittings or services and so cannot verify that they are connected, in working order or fit for purpose. A buyer must check the availability of any property and make an appointment to view before embarking on any journey to see a property.

