



6 Wembury Meadow, Wembury, Plymouth, Devon, PL9 0LG



# Price £375,000

6 Wembury Meadow is an extended and beautifully presented three-bedroom detached bungalow, nestled in a quiet cul-de-sac in the heart of the sought-after Wembury Village. This charming home offers a perfect blend of comfort, space, and tranquillity, making it an ideal choice for families, retirees, or anyone seeking a peaceful lifestyle close to the coast.

The property has been thoughtfully extended to maximize living space, and an additional bedroom featuring a spacious lounge with a feature picture window and log burner, a bright and airy, extended kitchen/dining area, and three generously sized bedrooms. The master bedroom boasts views over the garden, while the additional bedrooms offer flexibility for guest accommodation or home office use. There is a three-piece family bathroom and a separate three piece shower room.

Outside, the property benefits from a private rear garden, perfect for entertaining or enjoying quiet moments surrounded by nature. A garage and driveway provide ample parking and storage space and a low maintenance front garden that could be adapted to provide additional parking (subject to the appropriate consents). Situated within walking distance of local amenities, including shops, schools, and the picturesque Wembury Beach, this bungalow offers both convenience and coastal living. With easy access to Plymouth and the South Hams countryside.

The property has undergone an extensive programme of refurbishment and has been extended by its current owners and should be viewed at the earliest opportunity to be fully appreciated.

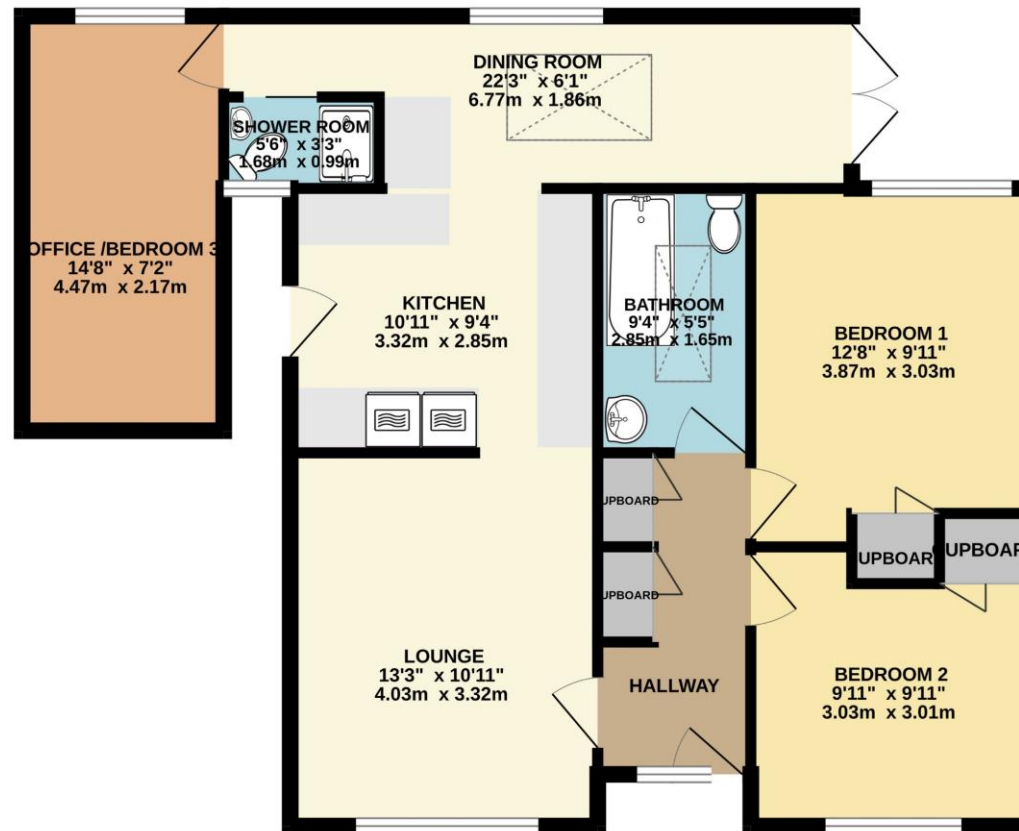
To view this property call Lang Town & Country Estate Agents on 01752 456000.

[www.langtownandcountry.com](http://www.langtownandcountry.com)









TOTAL FLOOR AREA : 822 sq.ft. (76.4 sq.m.) approx.  
 Measurements are approximate. Not to scale. Illustrative purposes only  
 Made with Metropix ©2025



Lang Town & Country

6 The Broadway

Plymstock

Plymouth

PL9 7AU

Tel: 01752 456000

Email: [plymstockoffice@langtownandcountry.com](mailto:plymstockoffice@langtownandcountry.com)

Lang Town & Country endeavour to ensure the accuracy of property details produced and displayed, we have not tested any apparatus, equipment, fixtures, fittings or services and so cannot verify that they are connected, in working order or fit for purpose. A buyer must check the availability of any property and make an appointment to view before embarking on any journey to see a property.

