



LANG TOWN  
& COUNTRY

29 HAYE ROAD, ELBURTON, PLYMOUTH, DEVON, PL9 8HS





# Price £725,000



This is a beautifully presented, modern detached home in the desirable area of Elburton. This spacious 5/6-bedroom property offers stylish and versatile living spaces, ideal for families or those who love to entertain. The house features a bright and airy design, with large windows that allow natural light to fill each room, creating a warm and welcoming atmosphere. The principal accommodation comprises; a lounge, separate dining room, modern fitted kitchen/family room and separate utility room. There are six bedrooms that offer flexibility to suit a wide range of purchasers, two of which have en-suite facilities, a four-piece family bathroom and ground floor WC.

To the front of the property there is ample off-road parking and access to the garage. To the rear there is a private south-facing garden which is a true highlight of the property, designed for both relaxation and entertainment. It includes a spectacular generous sized lodge, equipped with a bar and outdoor kitchen, perfect for hosting summer gatherings or enjoying a quiet evening outdoors. The low maintenance garden has an artificial lawn and patio area that offers plenty of space for outdoor dining, lounging, and play.

This fantastic property must be seen to be truly appreciated the quality and finishing touches.

This family home is situated within close proximity to amenities and transport links. Elburton Village offers a wide array of shops to include a cooperative store, post office, butchers and bakers to name but a few. Transport links provide access to the Plymouth Broadway Shopping Centre and the vibrant city centre of Plymouth. Recreational facilities can be found close by to include Horsham Playing Fields and the stunning coastal walks that can be found at Wembury and Heybook Bay.



To view this property call Lang Town & Country Estate Agents on **01752 456000**.

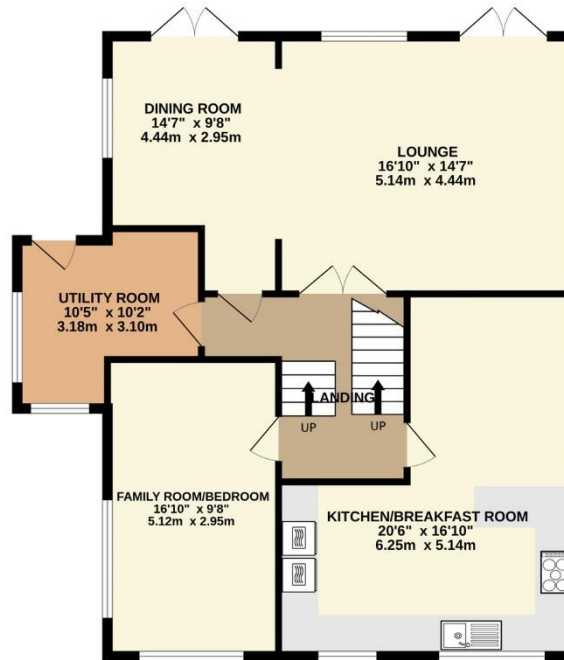




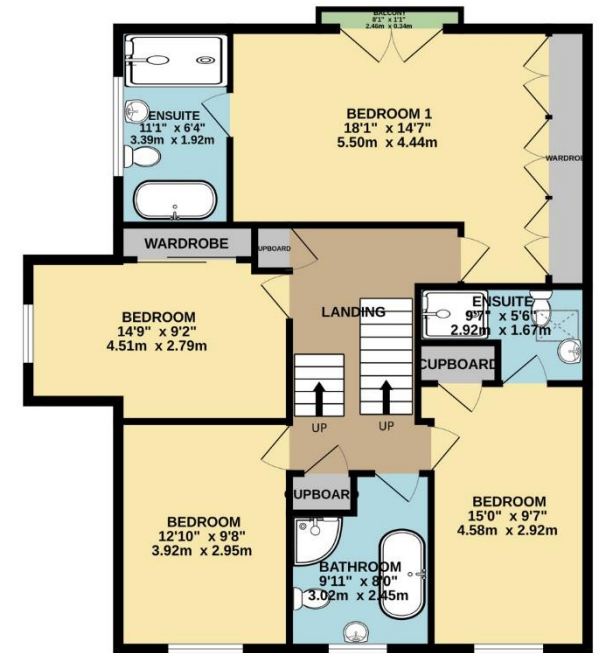
GROUND FLOOR  
967 sq.ft. (89.8 sq.m.) approx.



1ST FLOOR  
980 sq.ft. (91.1 sq.m.) approx.



2ND FLOOR  
972 sq.ft. (90.3 sq.m.) approx.



TOTAL FLOOR AREA : 2919 sq.ft. (271.2 sq.m.) approx.  
Measurements are approximate. Not to scale. Illustrative purposes only  
Made with Metropix ©2024



Lang Town & Country  
6 The Broadway  
Plymstock  
Plymouth  
PL9 7AU  
Tel: 01752 456000  
Email: [plymstockoffice@langtownandcountry.com](mailto:plymstockoffice@langtownandcountry.com)

Lang Town & Country endeavour to ensure the accuracy of property details produced and displayed, we have not tested any apparatus, equipment, fixtures, fittings or services and so cannot verify that they are connected, in working order or fit for purpose. A buyer must check the availability of any property and make an appointment to view before embarking on any journey to see a property.

