



2 Gilwell Avenue, Plymstock, Plymouth, Devon, PL9 8PA



## Offers Over £300,000

Welcome to this inviting three-bedroom bungalow situated on a level sited corner plot on Gilwell Avenue. This charming property features a spacious lounge/diner, fitted kitchen, and a bright shower room, making it a comfortable and practical home.

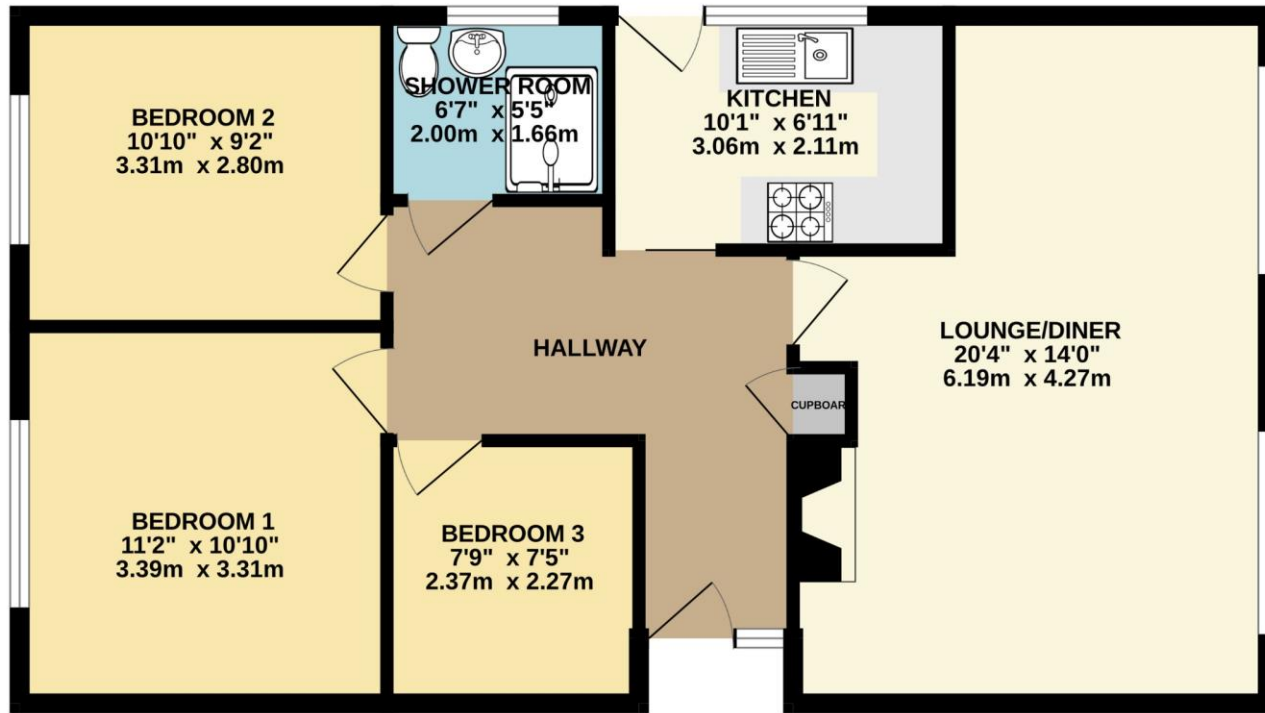
The generous garden wraps around the bungalow and is beautifully laid to lawn, offering plenty of outdoor space for relaxation. A detached garage and driveway at the rear provide convenient off-street parking and additional storage options.

This bungalow is perfect for those seeking a peaceful living environment with easy access to local amenities. The property is close to an array of local amenities including Elburton Village & The Broadway Shopping Centre, Doctor's Surgeries and Dental Surgeries. Recreational facilities can be found close by to include the Mount Batten Water Sports Centre, Staddon Heights Golf Course and the picturesque countryside and coastlines found at the South Hams which offers stunning walks along the Southwest coastal path. Transport links provide access to the vibrant Plymouth City Centre and the South Hams.



To view this property call Lang Town & Country Estate Agents on **01752 456000**.





TOTAL FLOOR AREA : 740 sq.ft. (68.8 sq.m.) approx.  
Measurements are approximate. Not to scale. Illustrative purposes only  
Made with Metropix ©2024



Lang Town & Country  
6 The Broadway  
Plymstock  
Plymouth  
PL9 7AU  
Tel: 01752 456000  
Email: [plymstock@langtownandcountry.com](mailto:plymstock@langtownandcountry.com)  
[www.langtownandcountry.com](http://www.langtownandcountry.com)

Lang Town & Country endeavour to ensure the accuracy of property details produced and displayed, we have not tested any apparatus, equipment, fixtures, fittings or services and so cannot verify that they are connected, in working order or fit for purpose. A buyer must check the availability of any property and make an appointment to view before embarking on any journey to see a property.

