



LANG TOWN  
& COUNTRY

1 Misterton Close, Elburton, Plymouth, PL9 8TY



# Price £495,000



Lang Town & Country are delighted to offer beautifully presented five-bedroom detached family home, perfectly situated on a desirable corner plot in a quiet residential area. This spacious property boasts a detached double garage and a private, south-facing garden, ideal for outdoor entertaining and relaxation whilst providing a safe environment for children to play.

Inside, the modern fitted kitchen diner provides a sleek and functional space, perfect for family meals and entertaining and a separate utility room. There is a dual aspect lounge with feature media wall and inset fire. French doors provide access to the rear garden. Also, on the ground floor you have a recently fitted, modern WC with wash hand basin and WC

Arranged on the first and second floor there are five bedrooms, two of which have en-suite facilities and a beautiful family bathroom.

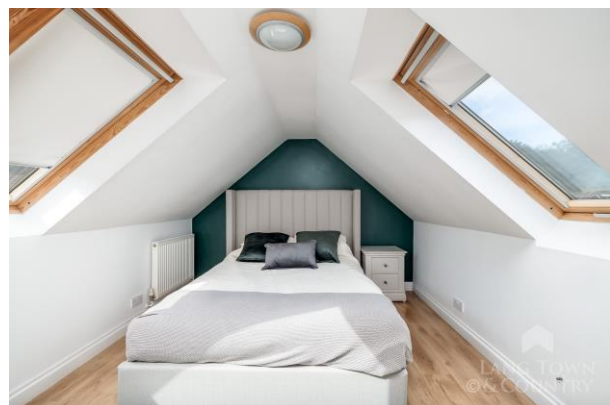
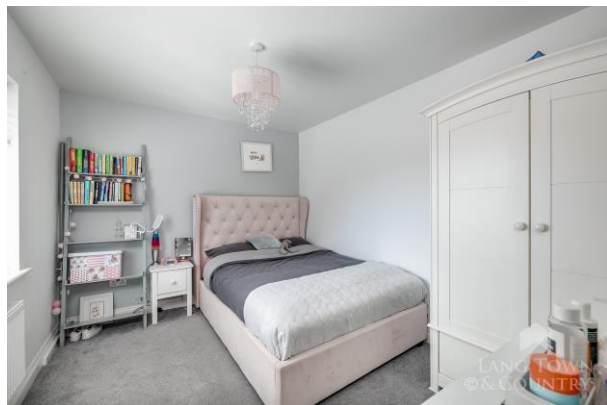
To the front of the property there is a small garden leading to the front entrance and to the side you have a double width driveway that provides parking and access to the double garage. The garage has been partially converted and offers a separate space that has a multitude of uses and a boarded loft space with ladder for additional storage. To the rear of the property there is an enclosed private rear garden laid to lawn with a patio seating area all which benefits from a southerly aspect.

This family home is situated within close proximity to amenities and transport links. Elburton Village offers a wide array of shops to include a cooperative store, post office, butchers and bakers to name but a few. Transport links provide access to the Plymstock Broadway Shopping Centre and the vibrant city centre of Plymouth. Recreational facilities can be found close by to include Horsham Playing Fields and the stunning coastal walks that can be found at Wembury and Heybook Bay.

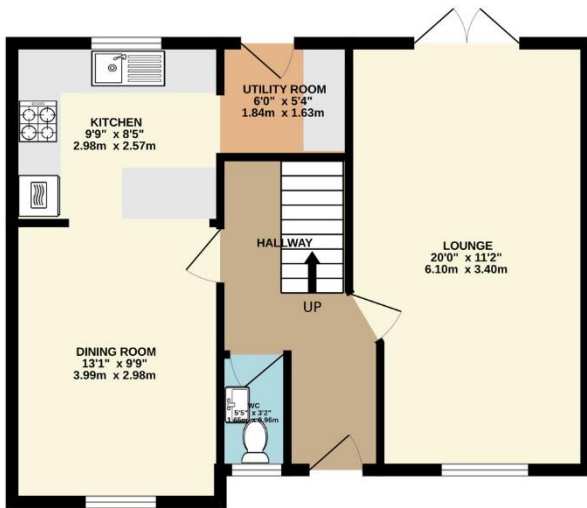


To view this property call Lang Town & Country Estate Agents on **01752 456000**.

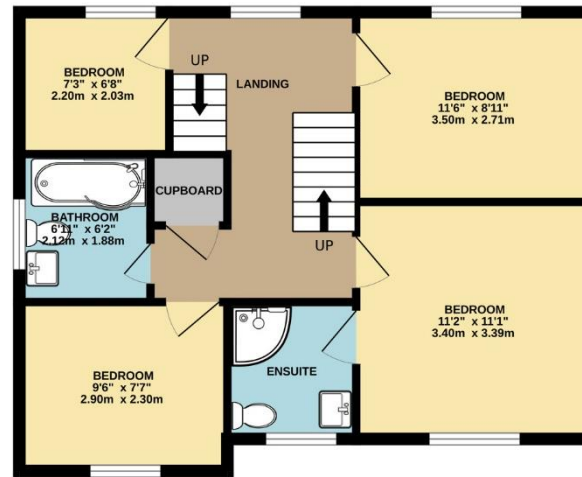
[www.langtownandcountry.com](http://www.langtownandcountry.com)



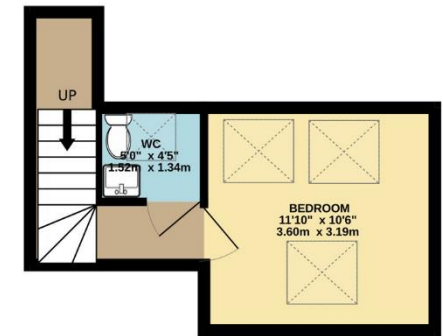
GROUND FLOOR  
554 sq.ft. (51.5 sq.m.) approx.



1ST FLOOR  
554 sq.ft. (51.5 sq.m.) approx.



2ND FLOOR  
188 sq.ft. (17.4 sq.m.) approx.



TOTAL FLOOR AREA : 1296 sq.ft. (120.4 sq.m.) approx.  
Measurements are approximate. Not to scale. Illustrative purposes only  
Made with Metropix ©2024



Lang Town & Country  
6 The Broadway  
Plymstock  
Plymouth  
PL9 7AU  
Tel: 01752 456000  
Email: [plymstockoffice@langtownandcountry.com](mailto:plymstockoffice@langtownandcountry.com)

Lang Town & Country endeavour to ensure the accuracy of property details produced and displayed, we have not tested any apparatus, equipment, fixtures, fittings or services and so cannot verify that they are connected, in working order or fit for purpose. A buyer must check the availability of any property and make an appointment to view before embarking on any journey to see a property.

