



16 Furzehatt Road, Plymstock, Plymouth, Devon, PL9 8QS



Price £360,000



Available to the market for the first time in over 60 years, is a charming 3-bedroom detached bay-fronted house located in the heart of Plymstock. This delightful property offers a perfect blend of traditional character and modern convenience, ideal for families or those looking for a spacious and comfortable home.

The bay-fronted design adds character and floods the living spaces with natural light. The generous size lounge has a feature fireplace and bay window. The dining room has views over the rear garden and offers potential to create a spacious kitchen/diner. Step back in time with the kitchen which has a range of wall and base units that have been lovingly cared for by the vendors. There is a separate utility room and ground floor WC.

On the first floor the property boasts three well-proportioned bedrooms, providing ample space for family living. There is a shower room with a modern fitted shower cubicle and wash hand basin and a separate WC.

One of the standout features of this home is the extensive rear garden, stretching approximately 150 feet. This large outdoor space is perfect for gardening enthusiasts, outdoor entertaining, or simply relaxing in a private and peaceful setting. The property benefits from a garage, providing secure parking or additional storage space. In addition, there is a driveway with off-road parking, ensuring convenience for multiple vehicles.

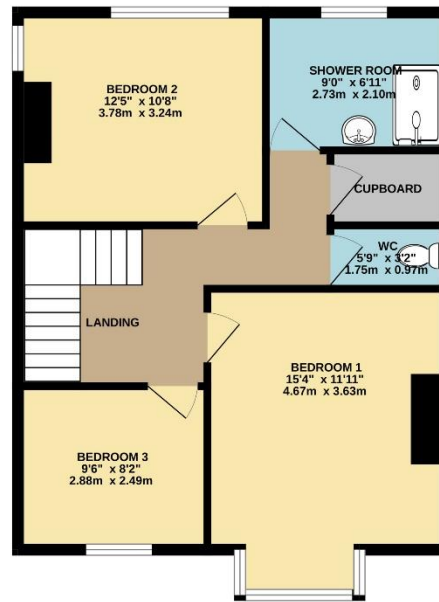
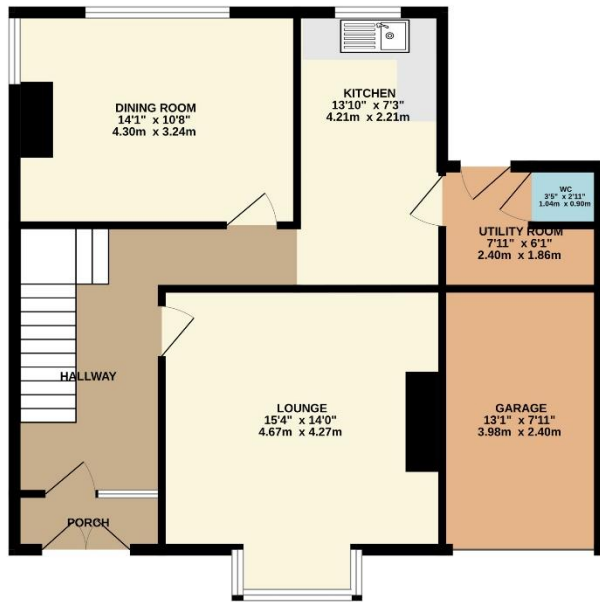
This family home is situated within close proximity to amenities and transport links. Elburton Village offers a wide array of shops to include a cooperative store, post office, butchers and bakers to name but a few. Transport links provide access to the Plymstock Broadway Shopping Centre and the vibrant city centre of Plymouth. Recreational facilities can be found close by to include Horsham Playing Fields and the stunning coastal walks that can be found at Wembury and Heybook Bay.



To view this property call Lang Town & Country Estate Agents on **01752 456000**

www.langtownandcountry.com





TOTAL FLOOR AREA: 1325 sq.ft. (123.1 sq.m.) approx.
Measurements are approximate. Not to scale. Illustrative purposes only
Made with Metropix ©2024



Lang Town & Country
6 The Broadway
Plymouth
PL9 7AU
Tel: 01752 456000
Email: plymstock@langtownandcountry.com
www.langtownandcountry.com

Lang Town & Country endeavour to ensure the accuracy of property details produced and displayed, we have not tested any apparatus, equipment, fixtures, fittings or services and so cannot verify that they are connected, in working order or fit for purpose. A buyer must check the availability of any property and make an appointment to view before embarking on any journey to see a property.

