



Meadow House, Horn Lane, Plymstock , Plymouth, Devon, PL9 9BR



## Guide Price £625,000



Located in the heart of Plymstock, Meadow House is a substantial six bedroom, extended detached family home. The property offers versatile accommodation to suit a wide range of purchasers including those looking for multi-generational living.

The property comprises on the ground floor, an entrance hall with a cloakroom/WC, a bay fronted lounge, a bay fronted sitting room with a feature fireplace, an open plan kitchen/dining/family room with Velux windows and French doors giving an abundance of light and access to the rear garden. The kitchen has a wide selection of wall and base units and a generous sized pantry cupboard. Further accommodation is situated on the ground floor which the current owners previously used as an annexe, it comprises of a secondary kitchen, a bedroom, reception/dining room and a wet room.

On the first floor there are five bedrooms, three of which have en-suite facilities and there is a separate shower room with WC, wash hand basin and shower cubicle.

The property has been adapted for disabled/wheelchair access and has an external lift to the front. There is a mature garden to the front with an established hedgerow and a variety of shrubs providing colour throughout the year. Double electric gates provide additional privacy and security whilst providing access to the driveway and detached double garage. The garage has light and power and workshop space. To the rear there is a patio seating area leading on to a level sited, private lawned garden.

This property has to be viewed to fully appreciate the size and quality of accommodation on offer.

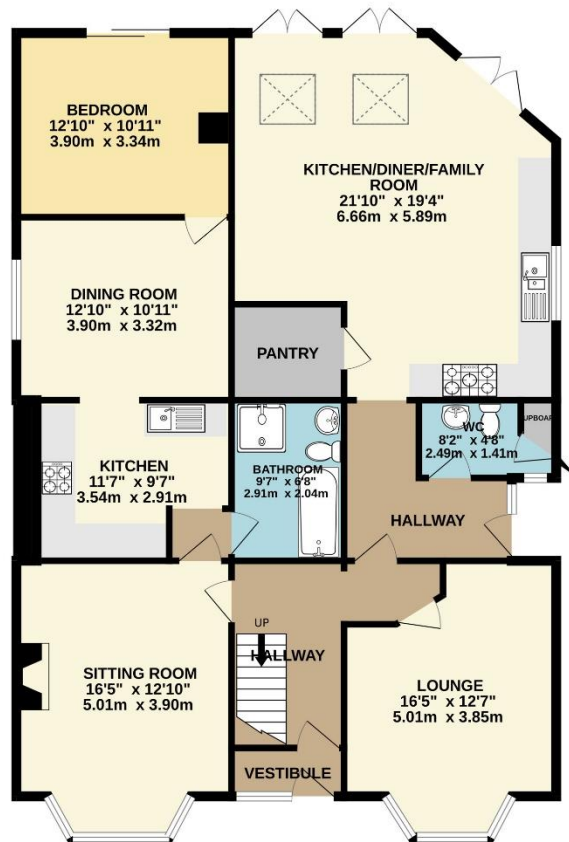
This property is close to an array of local amenities including the Broadway Shopping Centre, Doctor's Surgeries and Dental Surgeries. Recreational facilities can be found close by to include the Mount Batten Water Sports Centre, Staddon Heights Golf Course and the picturesque countryside and coastlines found at the South Hams which offers stunning walks along the South West coastal path. Transport links provide access to the vibrant Plymouth City Centre and the South Hams.

To view this property call Lang Town & Country Estate Agents on 01752 456000.

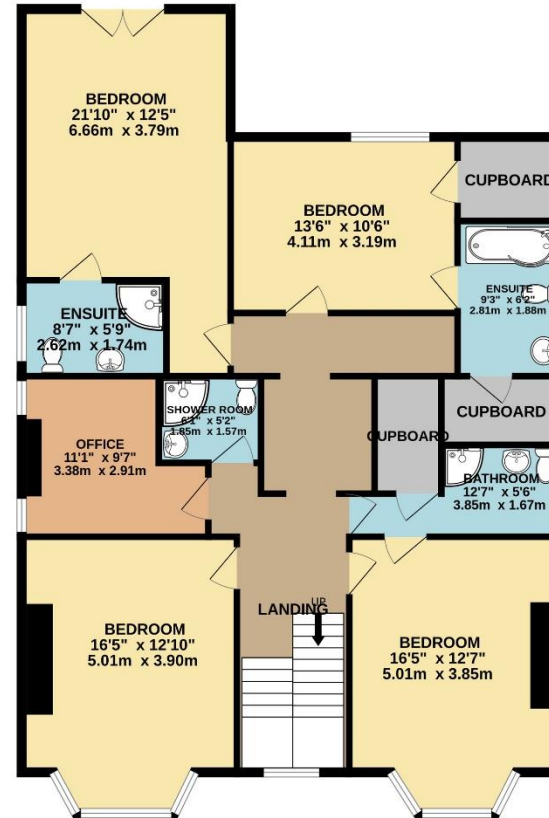




GROUND FLOOR  
1432 sq.ft. (133.0 sq.m.) approx.



1ST FLOOR  
1316 sq.ft. (122.3 sq.m.) approx.



TOTAL FLOOR AREA : 2748 sq.ft. (255.3 sq.m.) approx.  
Measurements are approximate. Not to scale. Illustrative purposes only  
Made with Metropix ©2024



Lang Town & Country  
6 The Broadway  
Plymstock  
Plymouth  
PL9 7AU  
Tel: 01752 456000  
Email: [plymstockoffice@langtownandcountry.com](mailto:plymstockoffice@langtownandcountry.com)

Lang Town & Country endeavour to ensure the accuracy of property details produced and displayed, we have not tested any apparatus, equipment, fixtures, fittings or services and so cannot verify that they are connected, in working order or fit for purpose. A buyer must check the availability of any property and make an appointment to view before embarking on any journey to see a property.

