



LANG TOWN  
& COUNTRY  
SALES

8 Third Avenue, Billacombe, Plymouth, Devon, PL9 8AN

LANG TOWN  
& COUNTRY  
SALES

# Price £525,000



Located at the end of a desirable cul-de-sac is this deceptively spacious 5 bedroom detached bungalow. The property occupies a generous size level plot with ample parking and a private south facing rear garden.

The property offers flexible accommodation to suit a wide range of purchasers with annex potential and a detached garage currently used as a studio with shower room. Principal accommodation comprises of a spacious lounge with patio doors leading to the rear south facing garden. Generous size kitchen/diner with a modern range of high-gloss ivory units with eye-level wall cupboards, matching base cupboards and drawers with Corian work surfaces. Island unit with matching base cupboards and drawers with door leading to a spacious utility room. You have five double bedrooms with the master bedroom benefitting from a range of fitted wardrobes and an en-suite wet room. There is a further modern Jack & Jill shower.



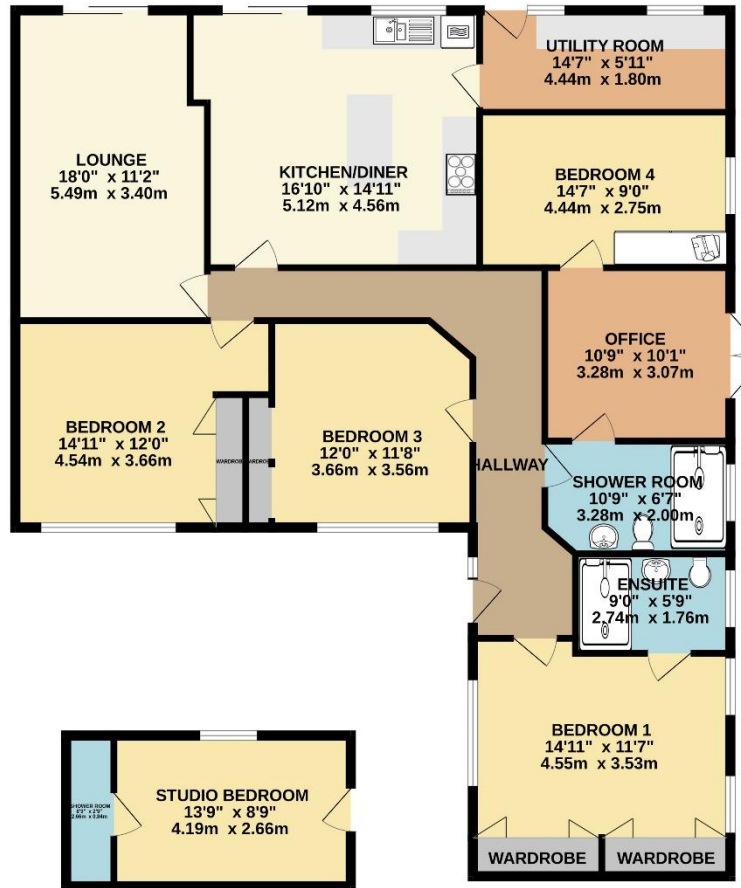
To the front of the property there are double gates that open onto a private driveway that offers ample parking. The detached garage has been converted into a studio or home office with a shower room. To the rear of the property there is a private, generous sized south facing garden with a patio seating area.

This property is close to an array of local amenities including the Broadway Shopping Centre, Doctor's Surgeries and Dental Surgeries. Recreational facilities can be found close by to include the Mount Batten Water Sports Centre, Staddon Heights Golf Course and the picturesque countryside and coastlines found at the South Hams which offers stunning walks along the South West coastal path. Transport links provide access to the vibrant Plymouth City Centre and the South Hams.

To view this property call Lang Town & Country Estate Agents on 01752 456000.

[www.langtownandcountry.com](http://www.langtownandcountry.com)





TOTAL FLOOR AREA: 1693 sq.ft. (157.3 sq.m.) approx.  
 Measurements are approximate. Not to scale. Illustrative purposes only.  
 Made with Metroplan ©2023



Lang Town & Country  
 6 The Broadway  
 Plymstock  
 Plymouth  
 PL9 7AU  
 Tel: 01752 456000  
 Email: [plymstock@langtownandcountry.com](mailto:plymstock@langtownandcountry.com)

Lang Town & Country endeavour to ensure the accuracy of property details produced and displayed, we have not tested any apparatus, equipment, fixtures, fittings or services and so cannot verify that they are connected, in working order or fit for purpose. A buyer must check the availability of any property and make an appointment to view before embarking on any journey to see a property.

