



Queens Reach
EAST MOLESEY, KT8

CHK
MOUNTFORD
Proud member of the John D Wood & Co. Family

Queens Reach

EAST MOLESEY, KT8



A one double bedroom apartment featuring superb river views over the River Mole. Within a private gated development located close to the cosmopolitan Village centre of Hampton Court.

River views

Gated development

Close to Station





£1,575.00 pcm (£363.46 pw)

Subject to contract

Local Authority: Elmbridge

Furnishing: Furnished

Council Tax Band: E

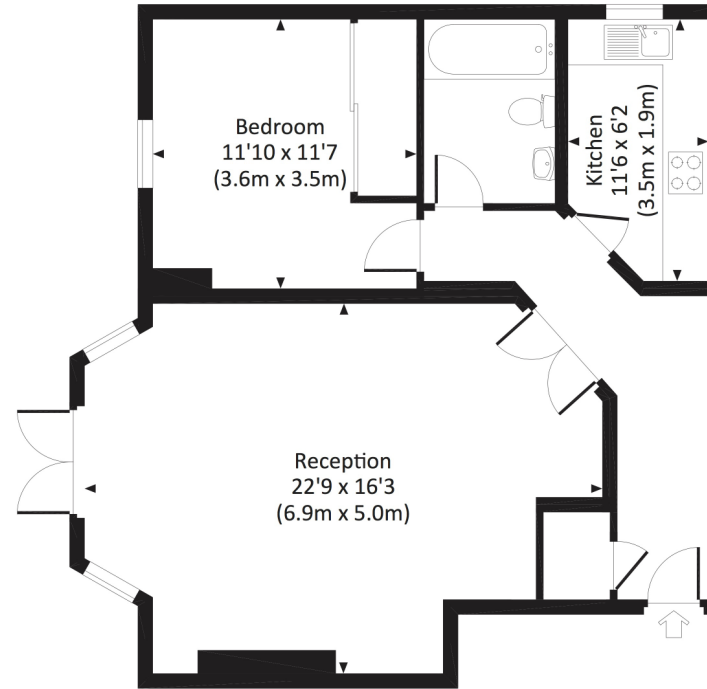
Availability: June 2024

Reference: QU8037

Approximate Gross Internal Area:
695 sq.ft

Energy Efficiency Rating	
Current	Potential
Very energy efficient - lower running costs	
(92-100) A	
(81-91) B	
(69-80) C	76
(55-68) D	71
(39-54) E	
(21-38) F	
(1-20) G	
Not energy efficient - higher running costs	
EU Directive 2002/91/EC	

CREEK ROAD, KT8
Approx. gross internal area
695 Sq Ft. / 64.6 Sq M.



GROUND FLOOR

All measurements have been made in accordance with RICS Code of Measuring Practice which are approximate only and only for illustrative purposes. For the avoidance of doubt, Dowling Jones Design shall not be liable for any reliance on these measurements. © 2017 www.dowlingjones.com 020 7610 9933

CHK001_2314353_1237266_JDW022

01372 390056
53 High Street, KT10 9RQ

chkmountford.co.uk

CHK Mountford give notice to anyone reading these particulars that: i) this material is protected by the laws of copyright. The owner of the copyright is John D Wood & Co. This property sheet forms part of our database, and is protected by the database rights and copyrights laws. No unauthorised copying or distribution without permission; ii) the particulars do not constitute part of an offer or contract; iii) the particulars including text, photographs and plans are for the guidance only of prospective purchasers and must not be relied upon as statements of fact; iv) the descriptions provided therein represent the opinion of the author and whilst given in good faith should not be construed as statements of fact; v) nothing in these particulars shall be deemed a statement that the property is in good condition or otherwise nor that any services or facilities are in good working order; vi) all measurements are approximate. April 2017.



Proud member of the John D Wood & Co. Family