



Clive Road
ESHER, KT10

CHK
MOUNTFORD
Proud member of the John D Wood & Co. Family

Clive Road

ESHER, KT10



Located in one of Esher's most desirable private roads, this handsome five bedroom detached family home offers spacious and bright accommodation featuring a recently refitted luxury appointed kitchen leading into a lovely conservatory. Only a moments' walk to Esher's cosmopolitan High Street with its many restaurants, cafes and Everyman cinema.



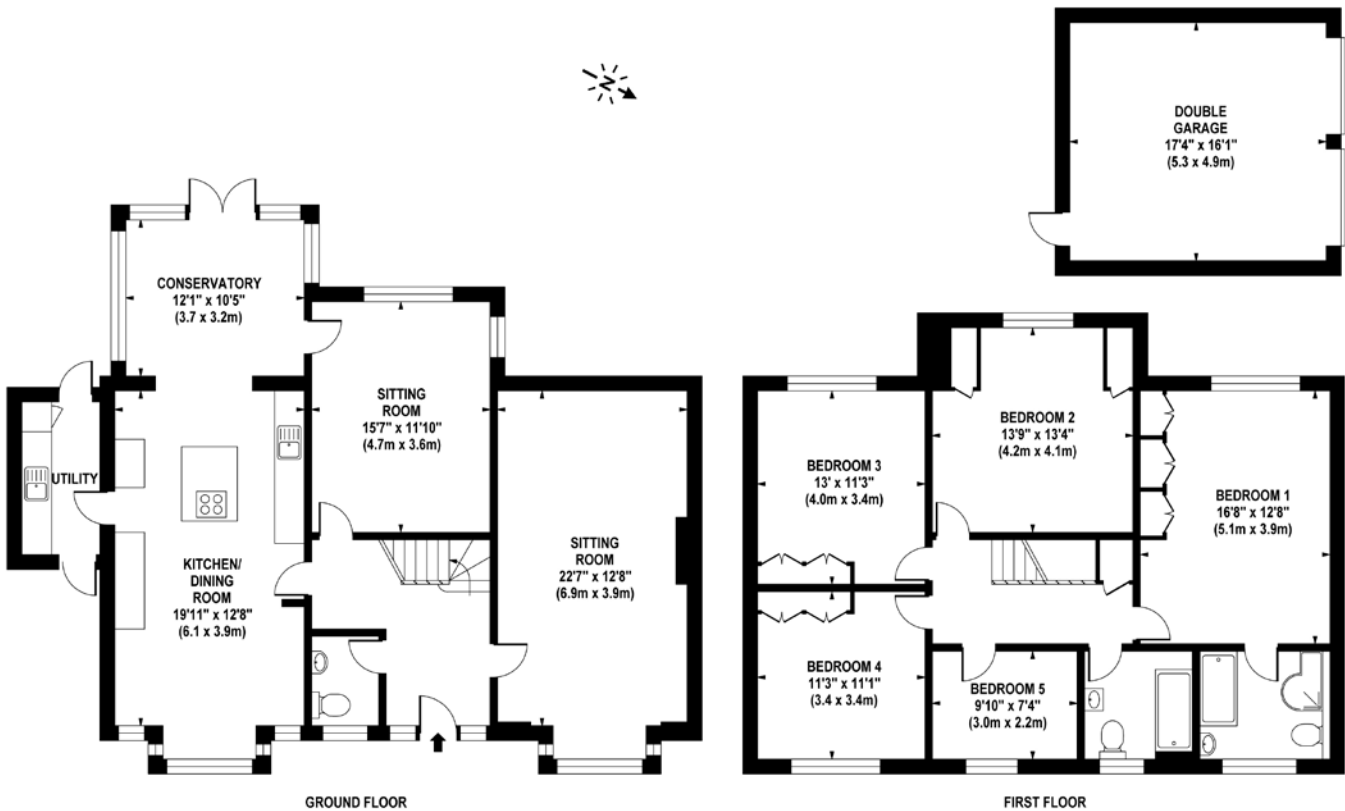


£6,500.00 pcm (£1,500.00 pw)
Subject to contract

Local Authority: Elmbridge
Furnishing: Unfurnished
Council Tax Band: H
Availability: October 2024
Reference: CL8614

Approximate Gross Internal Area:
2454 sq.ft

Energy Efficiency Rating		
	Current	Potential
Very energy efficient - lower running costs		
(92-100) A		
(81-91) B		
(69-80) C		
(55-68) D		
(39-54) E		
(21-38) F		
(1-20) G		
Not energy efficient - higher running costs		
EU Directive 2002/91/EC		



APPROX. GROSS INTERNAL FLOOR AREA 2454 SQ FT / 228 SQ M

Whilst every attempt has been made to ensure the accuracy of the floorplan contained here, measurements of doors, windows and rooms are approximate and no responsibility is taken for any error omission or mis-statement. These plans are for representation purposes only and should be used as such by any prospective purchaser / tenant. The services, systems and appliances listed in this specification have not been tested and no guarantee as to their operating ability or their efficiency can be given

© www.squarefeetuk.com

01372 390056
53 High Street, KT10 9RQ
chkmountford.co.uk

CHK Mountford give notice to anyone reading these particulars that: i) this material is protected by the laws of copyright. The owner of the copyright is John D Wood & Co. This property sheet forms part of our database, and is protected by the database rights and copyrights laws. No unauthorised copying or distribution without permission; ii) the particulars do not constitute part of an offer or contract; iii) the particulars including text, photographs and plans are for the guidance only of prospective purchasers and must not be relied upon as statements of fact; iv) the descriptions provided therein represent the opinion of the author and whilst given in good faith should not be construed as statements of fact; v) nothing in these particulars shall be deemed a statement that the property is in good condition or otherwise nor that any services or facilities are in good working order; vi) all measurements are approximate. April 2017.