



Claremont Road  
ESHER, KT10

**CHK**  
MOUNTFORD  
Proud member of the John D Wood & Co. Family

# Claremont Road

ESHER, KT10



A very spacious two double bedroom, luxury appointed first floor apartment with a separate study or third bedroom. Benefitting from having a secure gated entrance to private underground parking.

**Two/three bedrooms**

**Two bathrooms**

**Luxury kitchen**

**Secure parking**




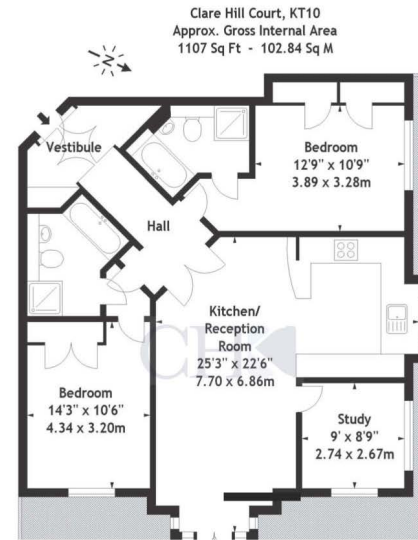


£2,700.00 pcm (£623.07 pw)  
 Subject to contract

Local Authority: Elmbridge  
 Furnishing: unfurnished  
 Council Tax Band: F  
 Availability: June2024  
 Reference: CL8359

Approximate Gross Internal Area:  
 1,107 sq.ft.

Energy Efficiency Rating		
	Current	Potential
Very energy efficient - lower running costs		
(92-100) <b>A</b>		
(81-91) <b>B</b>		
(69-80) <b>C</b>	74	82
(55-68) <b>D</b>		
(39-54) <b>E</b>		
(21-38) <b>F</b>		
(1-20) <b>G</b>		
Not energy efficient - higher running costs		
EU Directive 2002/91/EC		



Measured in accordance with RICS guidelines. Every attempt is made to ensure accuracy, however all measurements are approximate. This floor plan is for illustrative purposes only and is not to scale.  
 © Datography UK Ltd 2008  
 Photographs \* Floorplans \* Virtual Tours  
 Tel: 08707 66 30 30 www.datography.com

01372 390056  
 53 High Street, KT10 9RQ  
[chkmountford.co.uk](http://chkmountford.co.uk)

CHK Mountford give notice to anyone reading these particulars that: i) this material is protected by the laws of copyright. The owner of the copyright is John D Wood & Co. This property sheet forms part of our database, and is protected by the database rights and copyrights laws. No unauthorised copying or distribution without permission; ii) the particulars do not constitute part of an offer or contract; iii) the particulars including text, photographs and plans are for the guidance only of prospective purchasers and must not be relied upon as statements of fact; iv) the descriptions provided therein represent the opinion of the author and whilst given in good faith should not be construed as statements of fact; v) nothing in these particulars shall be deemed a statement that the property is in good condition or otherwise nor that any services or facilities are in good working order; vi) all measurements are approximate. April 2017.