



Geranium Drive Morpeth

- Detached Family Home
- Enclosed Rear Garden
- Three Bedroomed
- Garage and Driveway
- Modern Décor Throughout
- Freehold

Asking Price: £287,500

01670 511711
17 Newgate Street, Morpeth

ROOK
MATTHEWS
SAYER

www.rookmatthewssayer.co.uk
morpeth@rmsestateagents.co.uk

Geranium Drive, Morpeth

We have this beautifully presented three bedroomed detached home, situated on the ever-popular Geranium Drive, Morpeth. The property is situated on a small and quiet development ideal for those looking for an idyllic semi-rural location. It offers a fantastic spot for commuters and families alike, as you have easy access to the A1 North and South. The property itself has fantastic views to the front, surrounded by greenery whilst internally the property offers bright and spacious rooms throughout and is ready to move straight into. The bustling town of Morpeth is but a short drive away where you will find an abundance of bars, schools, river walks, supermarkets and shopping delights to choose from.

The accommodation briefly comprises of: Entrance hallway, downstairs W.C., bright and airy lounge with floods of natural light due to the patio doors leading you to the rear garden, separate dining room. The high spec kitchen has been fitted with a range of white wall and base units, offering an abundance of storage. Integrated appliances include fridge/freezer, dishwasher, double oven, four ring gas hob and washing machine. You further benefit from a separate utility room which was converted using half of the garage.

To the first floor, you have three good sized bedrooms, two doubles and one single, all of which have been carpeted throughout and finished with neutral décor. The master bedroom benefits from large fitted wardrobes offering excellent storage and its own en suite shower room. The family bathroom has been tiled in a modern slick grey tile and fitted with W.C., hand basin, bath and shower over bath.

Externally you have a private drive to accommodate at least two cars with additional on street parking available. The garage has been partially converted to the utility but does still provide space to the front for extra storage. There is a large garden to the rear which is fully enclosed and has been laid to lawn with patio area, the garden is ideal for those who enjoy outdoor entertaining.

We anticipate high levels of interest for this home. Early viewings are recommended.

- Lounge: 14'2 x 10'4 (4.32m x 3.15m)
- Dining Room: 10'1 x 8'6 (3.07m x 2.59m)
- Kitchen: 9'8 x 9'7 (2.95m x 2.92m)
- Utility: 7'9 x 8'5 (2.36m x 2.57m)
- W.C: 8'6 x 3'5 (2.59m x 1.06m)
- Bedroom One: 11'5 x 8'10 (3.48m x 2.69m)
- En-Suite: 6'9 x 4'10 Max points (2.06m x 1.24m Max points)
- Bedroom Two: 11'7 x 9'10 (3.53m x 2.99m)
- Bedroom Three: 9'9 x 8'9 Max points (2.97m x 2.67m Max points)
- Bathroom: 8'4 x 6'8 Max points (2.54m x 2.03m Max points)

PRIMARY SERVICES SUPPLY

- Electricity: Mains
- Water: Mains
- Sewerage: Mains
- Broadband: TBC
- Mobile Signal / Coverage Blackspot: No
- Parking: Garage and Driveway

TENURE

Freehold – It is understood that this property is freehold, but should you decide to proceed with the purchase of this property, the Tenure must be verified by your Legal Adviser.

- EPC Rating: B
- Council Tax Band: C

M00008171.AB.JD.30/08/24.V.1

Score	Energy rating	Current	Potential
92+	A		97 A
81-91	B	84 B	
69-80	C		
55-68	D		
39-54	E		
21-38	F		
1-20	G		

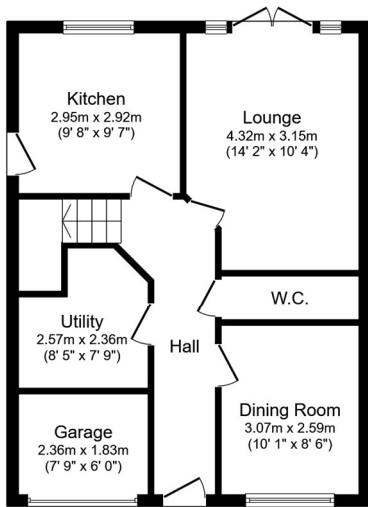
Important Note: Rook Matthews Sayer (RMS) for themselves and for the vendors or lessors of this property, whose agents they are, give notice that these particulars are produced in good faith, are set out as a general guide only and do not constitute part or all of an offer or contract. The measurements indicated are supplied for guidance only and as such must be considered incorrect. Potential buyers are advised to recheck the measurements before committing to any expense. RMS has not tested any apparatus, equipment, fixtures, fittings or services and it is the buyer's interests to check the working condition of any appliances. RMS has not sought to verify the legal title of the property and the buyers must obtain verification from their solicitor. No persons in the employment of RMS has any authority to make or give any representation or warranty whatever in relation to this property.

Money Laundering Regulations – intending purchasers will be asked to produce original identification documentation at a later stage and we would ask for your co-operation in order that there will be no delay in agreeing the sale. We will also use some of your personal data to carry out electronic identity verification. This is not a credit check and will not affect your credit score.

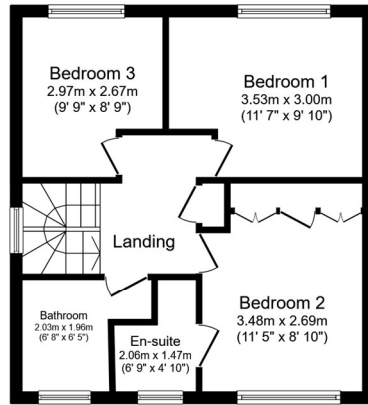
16 Branches across the North-East



Geranium Drive, Morpeth

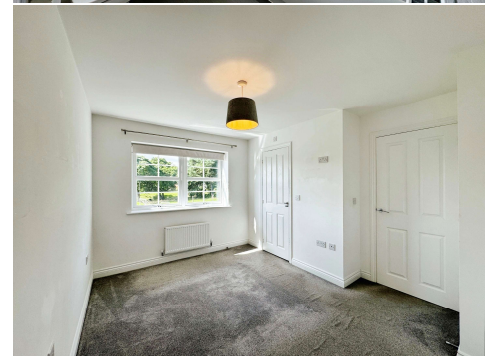


Ground Floor



First Floor

This floor plan is for illustrative purposes only. It is not drawn to scale. Any measurements, floor areas (including any total floor area), openings and orientations are approximate. No details are guaranteed, they cannot be relied upon for any purpose and do not form any part of any agreement. No liability is taken for any error, omission or misstatement. A party must rely upon its own inspection(s). Powered by www.Propertybox.io



Important Note: Rook Matthews Sayer (RMS) for themselves and for the vendors or lessors of this property, whose agents they are, give notice that these particulars are produced in good faith, are set out as a general guide only and do not constitute part or all of an offer or contract. The measurements indicated are supplied for guidance only and as such must be considered incorrect. Potential buyers are advised to recheck the measurements before committing to any expense. RMS has not tested any apparatus, equipment, fixtures, fittings or services and it is the buyer's interests to check the working condition of any appliances. RMS has not sought to verify the legal title of the property and the buyers must obtain verification from their solicitor. No persons in the employment of RMS has any authority to make or give any representation or warranty whatever in relation to this property.

Money Laundering Regulations – intending purchasers will be asked to produce original identification documentation at a later stage and we would ask for your co-operation in order that there will be no delay in agreeing the sale. We will also use some of your personal data to carry out electronic identity verification. This is not a credit check and will not affect your credit score.

16 Branches across the North-East

