



Shepherds Cote Drive

Hepscott Park

- Detached family home
- Four double bedrooms
- Prestigious development
- Garage and driveway for two cars
- Rear garden with patio area
- No onward chain

Asking Price: **£ 425,000**

01670 511711
17 Newgate Street, Morpeth

ROOK
MATTHEWS
SAYER

www.rookmatthewssayer.co.uk
morpeth@rmsstateagents.co.uk

Shepherds Cote Drive, Hepscoth Park

Simply stunning! This large, detached four bedroomed family home is tucked away on a quiet development on Shepherds Cote Drive, which is a prestigious and highly sought after development on Hepscoth Park, Morpeth. The attention to detail, modern tasteful décor and high-end fixtures and fittings, give this property the overall wow factor. Guaranteed to impress!

The property briefly comprises: - Entrance hallway, spacious bright and airy lounge which has been carpeted throughout and finished with white crisp walls, large kitchen and dining area with an additional family area which spans the back of the property and allows floods of natural light from the patio doors and windows, creating that perfect picture window of the garden to the rear. The high spec kitchen has been fitted with light wall and base units and separate island, offering endless amounts of storage. Appliances include integrated fridge/freezer, dishwasher, double oven, and four ring gas hob. You further benefit from a separate utility area and a downstairs W.C.

To the upper floor of the living accommodation, you have four large double bedrooms, all of which have been finished with white walls and carpeted throughout. The master bedroom looks incredible with beautifully fitted wardrobes and its very own en-suite shower room. The family bathroom comes fitted with W.C., hand basin and bathtub.

Externally you have a private driveway to accommodate at least two cars plus a garage which is great for storage. There is a small garden to the front offering side access to the rear garden, whilst to the rear you have a stunning generous sized level garden which has been laid to lawn with patio area.

No onward chain, this is a must view!

Lounge: 14'1 x 13'10 (4.29m x 4.22m)
 Family Area: 9'10 x 7'1 (2.99m x 2.16m)
 Kitchen/Diner: 21'3 x 11'4 (6.48m x 3.45m)
 Utility: 5'11 x 4'2 (1.80m x 1.28m)
 W.C: 5'10 x 4'0 (1.79m x 1.21m)
 Bedroom One: 13'11 x 10'5 (4.24m x 3.18m)
 En-Suite: 10'0 x 4'7 (3.05m x 1.43m)
 Bedroom Two: 13'3 x 9'9 (4.04m x 2.97m)
 Bedroom Three: 10'9 x 9'1 max (3.28m x 2.77m max)
 Bedroom Four: 9'9 x 6'4 (2.97m x 1.93m)
 Bathroom: 6'5 x 5'6 1.96m x 1.68m)

PRIMARY SERVICES SUPPLY

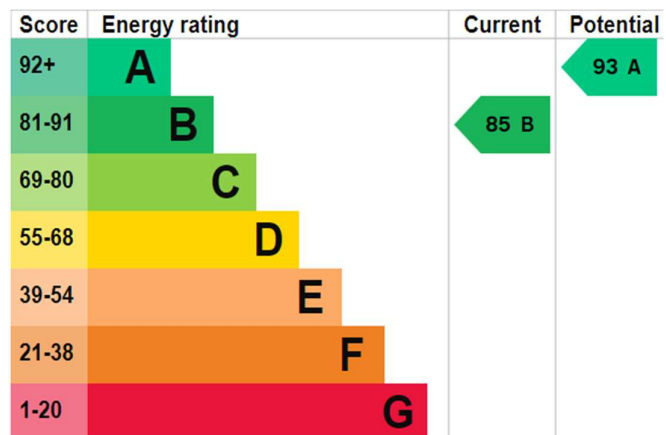
Electricity: Mains
 Water: Mains
 Sewerage: Mains
 Heating: Mains Gas
 Broadband: Satellite
 Mobile Signal / Coverage Blackspot: No
 Parking: Garage and driveway

TENURE

Freehold – It is understood that this property is freehold, but should you decide to proceed with the purchase of this property, the Tenure must be verified by your Legal Adviser

EPC Rating: B
 Council Tax Band: E

M00007512.AB.SS.17.4.24.V.3



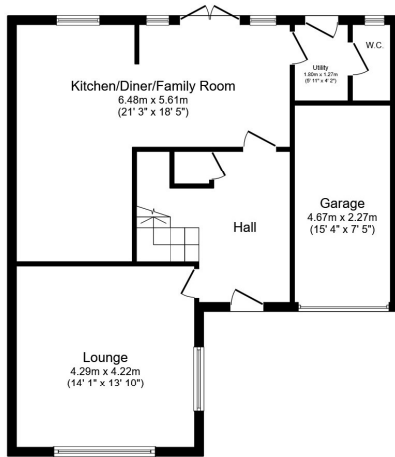
Important Note: Rook Matthews Sayer (RMS) for themselves and for the vendors or lessors of this property, whose agents they are, give notice that these particulars are produced in good faith, are set out as a general guide only and do not constitute part or all of an offer or contract. The measurements indicated are supplied for guidance only and as such must be considered incorrect. Potential buyers are advised to recheck the measurements before committing to any expense. RMS has not tested any apparatus, equipment, fixtures, fittings or services and it is the buyer's interests to check the working condition of any appliances. RMS has not sought to verify the legal title of the property and the buyers must obtain verification from their solicitor. No persons in the employment of RMS has any authority to make or give any representation or warranty whatever in relation to this property.

Money Laundering Regulations – intending purchasers will be asked to produce original identification documentation at a later stage and we would ask for your co-operation in order that there will be no delay in agreeing the sale. We will also use some of your personal data to carry out electronic identity verification. This is not a credit check and will not affect your credit score.

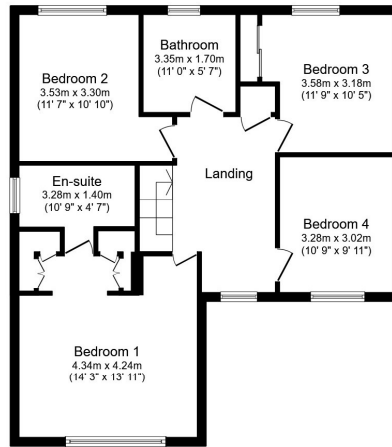
16 Branches across the North-East



Shepherds Cote Drive, Hepscott Park



Ground Floor



First Floor

This floor plan is for illustrative purposes only. It is not drawn to scale. Any measurements, floor areas (including any total floor area), openings and orientations are approximate. No details are guaranteed, they cannot be relied upon for any purpose and do not form any part of any agreement. No liability is taken for any error, omission or misstatement. A party must rely upon its own inspection(s). Powered by www.Propertybox.io



Important Note: Rook Matthews Sayer (RMS) for themselves and for the vendors or lessors of this property, whose agents they are, give notice that these particulars are produced in good faith, are set out as a general guide only and do not constitute part or all of an offer or contract. The measurements indicated are supplied for guidance only and as such must be considered incorrect. Potential buyers are advised to recheck the measurements before committing to any expense. RMS has not tested any apparatus, equipment, fixtures, fittings or services and it is the buyer's interests to check the working condition of any appliances. RMS has not sought to verify the legal title of the property and the buyers must obtain verification from their solicitor. No persons in the employment of RMS has any authority to make or give any representation or warranty whatever in relation to this property.

Money Laundering Regulations – intending purchasers will be asked to produce original identification documentation at a later stage and we would ask for your co-operation in order that there will be no delay in agreeing the sale. We will also use some of your personal data to carry out electronic identity verification. This is not a credit check and will not affect your credit score.

16 Branches across the North-East

