



Tranwell Court

Morpeth

- Barn conversion
- Three bedrooms
- Semi rural location
- Easy access to Morpeth
- Stunning mature garden
- Garage and allocated space

Offers In Excess Of: **£ 485,000**

01670 511711
17 Newgate Street, Morpeth

ROOK
MATTHEWS
SAYER

www.rookmatthewssayer.co.uk
morpeth@rmsestateagents.co.uk

Tranwell Court, Morpeth

Simply stunning and guaranteed to impress, sits this extremely spacious three bedroomed barn conversion located on Tranwell Court. The property offers a fantastic semi-rural location with beautiful rolling hills for scenery and on a clear day even offers sea views from the lounge. This family home offers very easy access into the historic town of Morpeth where you have an array of local bars restaurants and shopping wonders to choose from. Internally you are greeted with the overall WOW with evident high-end fixtures and fittings visible.

The property briefly comprises:- Entrance hallway, impressive open plan lounge with floods of light, neutral décor and a large stone feature wall with log burner. It further benefits from a second reception room with views over the rear garden. The open plan kitchen diner offers tremendous space with ample room for your own dining table and chairs. The country kitchen has been fitted with a range of wall and base units, offering an abundance of storage, and large picture-perfect window to enjoy the views. Appliances to include fridge and freezer, dishwasher, double oven and electric hob. To the rear of the kitchen, you have a generous sized separate utility room which offers direct access into the rear garden and a large walk-in cupboard. There is solid oak flooring to the entrance hallway, lounge, second reception room, kitchen and w.c.

To the opposite end of the accommodation, you have three large double bedrooms, all of which have been carpeted throughout and offer views over the fields. The master bedroom also benefits from its own private en-suite shower room. The family bathroom has been upgraded to a fantastic standard and has been finished with W.C., hand basin, walk-in shower and separate bath tub together with underfloor heating.

Externally to the rear of the property you have a stunning mature garden with decked area which is full of vibrancy and life. The garden is a sheer credit to its current owners and an ideal space for those who enjoy peaceful outdoor living at its best! You also have private parking in the form of a garage and parking space which can be found to the rear of the courtyard.

Overall, this property is guaranteed to impress and must be viewed to appreciate the space on offer.

Lounge	18.04 x 16.05	(5.59m x 5.00m)
Second reception room	16.06 x 13.04	(5.03m x 4.06m)
Kitchen/Diner	22.08 x 10.09	(6.91m x 3.28m)
Utility	10.09 x 10.05	(3.28m x 3.18m)
W.C.	9.01 x 4.08	(2.77m x 1.24m)
Bedroom One	12.10 x 11.04	(3.91m x 3.45m)
En-suite shower room	7.08 x 4.09	(2.33m x 1.25m)
Bedroom Two	14.00 x 10.01	(4.27m x 3.07m)
Bedroom Three	13.02 x 8.02	(4.01m x 2.48m)
Bathroom	12.08 x 6.07	(3.86m x 2.00m)

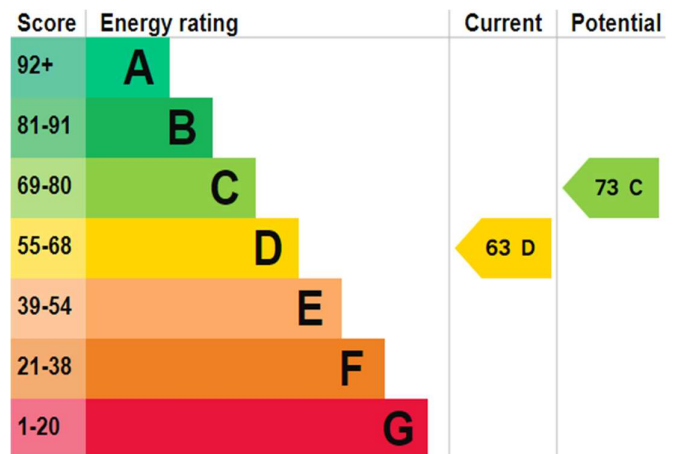
PRIMARY SERVICES SUPPLY

Electricity: Mains
 Water: Mains
 Sewerage: Septic tank
 Heating: Oil
 Broadband: Fibre (premises)
 Mobile Signal Coverage Blackspot: No
 Parking: Garage and one allocated space and communal parking

Leasehold. It is understood that this property is leasehold. Should you decide to proceed with the purchase of this property, the Tenure and associated details and costs must be verified by your Legal Advisor before you expend costs.
 Length of Lease: 999 years from 1st January 2001

EPC Rating: D
 Council Tax Band: F

M00007962.AB.SS.22.3.24.V.2



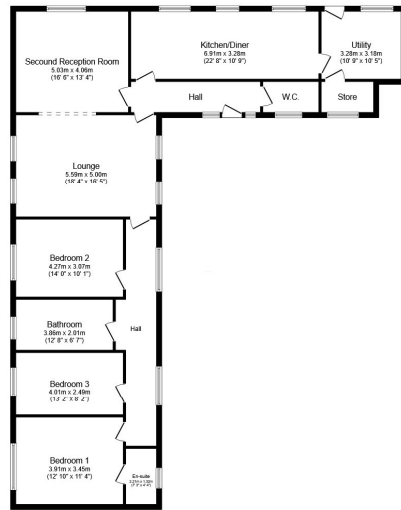
Important Note: Rook Matthews Sayer (RMS) for themselves and for the vendors or lessors of this property, whose agents they are, give notice that these particulars are produced in good faith, are set out as a general guide only and do not constitute part or all of an offer or contract. The measurements indicated are supplied for guidance only and as such must be considered incorrect. Potential buyers are advised to recheck the measurements before committing to any expense. RMS has not tested any apparatus, equipment, fixtures, fittings or services and it is the buyer's interests to check the working condition of any appliances. RMS has not sought to verify the legal title of the property and the buyers must obtain verification from their solicitor. No persons in the employment of RMS has any authority to make or give any representation or warranty whatever in relation to this property.

Money Laundering Regulations – intending purchasers will be asked to produce original identification documentation at a later stage and we would ask for your co-operation in order that there will be no delay in agreeing the sale. We will also use some of your personal data to carry out electronic identity verification. This is not a credit check and will not affect your credit score.

16 Branches across the North-East



Tranwell Court, Morpeth



Floor Plan

This floorplan is for illustrative purposes only and is not drawn to scale. Measurements, floor areas, openings and orientations are approximate. They should not be relied upon for any purpose and do not form any part of any agreement. No liability is taken for any error or mis-statement. All parties must rely on their own inspections. Powered by Propertybox.



Important Note: Rook Matthews Sayer (RMS) for themselves and for the vendors or lessors of this property, whose agents they are, give notice that these particulars are produced in good faith, are set out as a general guide only and do not constitute part or all of an offer or contract. The measurements indicated are supplied for guidance only and as such must be considered incorrect. Potential buyers are advised to recheck the measurements before committing to any expense. RMS has not tested any apparatus, equipment, fixtures, fittings or services and it is the buyer's interests to check the working condition of any appliances. RMS has not sought to verify the legal title of the property and the buyers must obtain verification from their solicitor. No persons in the employment of RMS has any authority to make or give any representation or warranty whatever in relation to this property.

Money Laundering Regulations – intending purchasers will be asked to produce original identification documentation at a later stage and we would ask for your co-operation in order that there will be no delay in agreeing the sale. We will also use some of your personal data to carry out electronic identity verification. This is not a credit check and will not affect your credit score.

16 Branches across the North-East

