



**Dovehouse Croft, Harlow, CM20 2LH**  
**£1,550 Per Month**

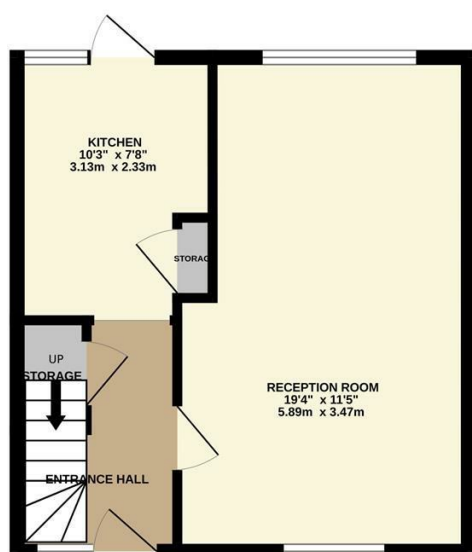
- Two Bedrooms
- Available NOW
- Immaculate Home
- Lounge/Diner
- Unfurnished
- Recently Decorated

# Dovehouse Croft, Harlow, CM20 2LH

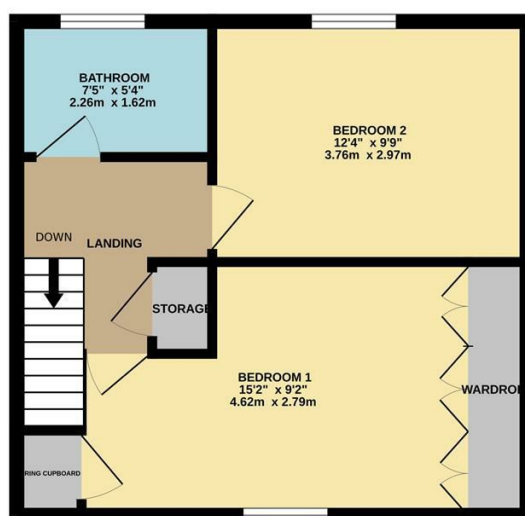
## £1,550 Per Month

A recently decorated two bedroom family home in the popular Mark Hall North area. The property is presented in immaculate condition and has been recently decorated and re-carpeted and offers good size accommodation with the the ground floor offering an entrance hall, lounge with dual aspect and a kitchen which has a range of fitted wall and base units. The first floor has a family bathroom and two double bedrooms with the main bedroom having fitted wardrobes. The rear garden is south facing and mainly laid to lawn.

GROUND FLOOR  
341 sq.ft. (31.7 sq.m.) approx.



1ST FLOOR  
386 sq.ft. (35.9 sq.m.) approx.



TOTAL FLOOR AREA: 727 sq.ft. (67.6 sq.m.) approx.

Whilst every attempt has been made to ensure the accuracy of the floorplan contained here, measurements of doors, windows, rooms and any other items are approximate and no responsibility is taken for any error, omission or mis-statement. This plan is for illustrative purposes only and should be used as such by any prospective purchaser. The services, systems and appliances shown have not been tested and no guarantee as to their operability or efficiency can be given.

Made with Metropix ©2026



Energy Efficiency Rating		
	Current	Potential
Very energy efficient - lower running costs		
(92 plus) A		
(81-91) B		
(69-80) C		
(55-68) D		
(39-54) E		
(21-38) F		
(1-20) G		
Not energy efficient - higher running costs		
England & Wales	EU Directive 2002/91/EC	EU Directive 2002/91/EC

Environmental Impact (CO <sub>2</sub> ) Rating		
	Current	Potential
Very environmentally friendly - lower CO <sub>2</sub> emissions		
(92 plus) A		
(81-91) B		
(69-80) C		
(55-68) D		
(39-54) E		
(21-38) F		
(1-20) G		
Not environmentally friendly - higher CO <sub>2</sub> emissions		
England & Wales	EU Directive 2002/91/EC	EU Directive 2002/91/EC

These particulars, whilst believed to be accurate are set out as a general outline only for guidance and do not constitute any part of an offer or contract. Intending purchasers should not rely on them as statements of representation of fact, but must satisfy themselves by inspection or otherwise as to their accuracy. No person in this firm's employment has the authority to make or give any representation or warranty in respect of the property.