

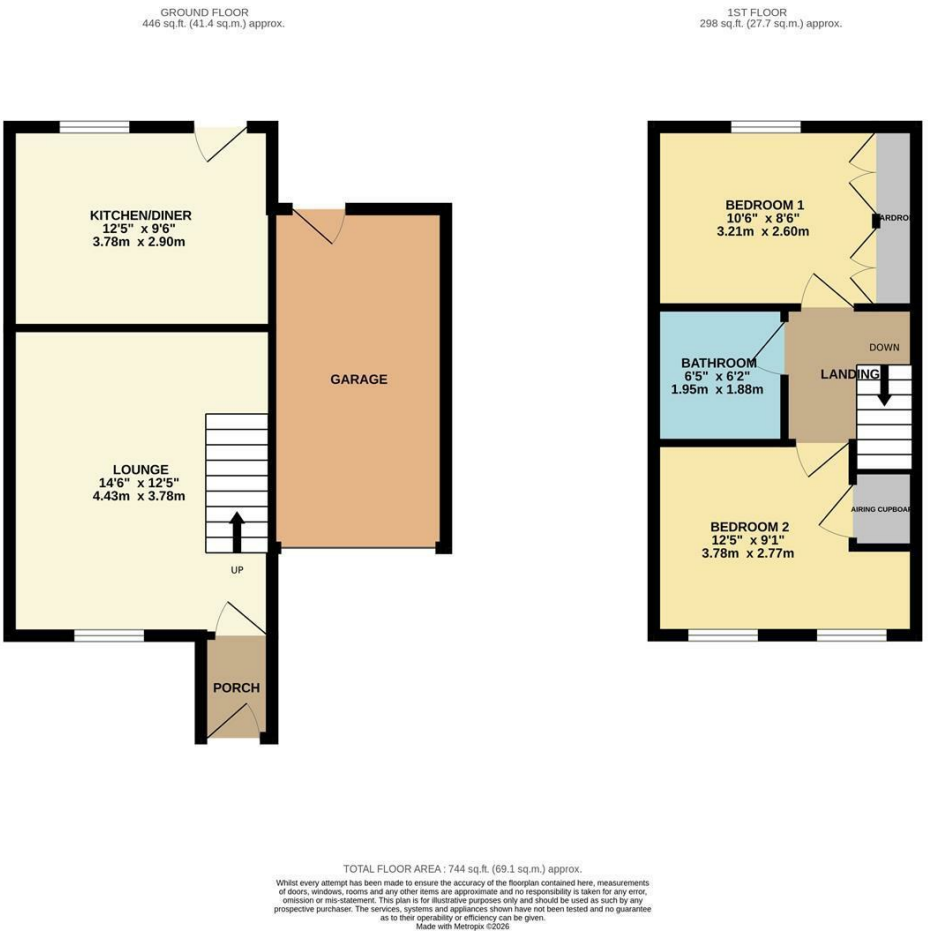
**Westbury Rise, Harlow, CM17 9NT**  
**£1,550 Per Month**

- Two Bedroom
- Kitchen/Diner
- End Of Terrace
- Available NOW
- Garage & Drive
- Unfurnished

# Westbury Rise, Harlow, CM17 9NT

## £1,550 Per Month

A two bedroom end of terrace home with garage and drive, available NOW on an unfurnished basis. On the ground floor the property has an entrance porch, lounge and a kitchen/diner which has a range of fitted wall & base units and has access to the rear garden. The first floor has a family bathroom and two double bedrooms with fitted wardrobes to the main bedroom. Outside there is a garage and driveway as well as front and rear gardens.



Energy Efficiency Rating		
	Current	Potential
Very energy efficient - lower running costs		
(92 plus) A		
(81-91) B		
(69-80) C		
(55-68) D		
(39-54) E		
(21-38) F		
(1-20) G		
Not energy efficient - higher running costs		
England & Wales		EU Directive 2002/91/EC

Environmental Impact (CO <sub>2</sub> ) Rating		
	Current	Potential
Very environmentally friendly - lower CO <sub>2</sub> emissions		
(92 plus) A		
(81-91) B		
(69-80) C		
(55-68) D		
(39-54) E		
(21-38) F		
(1-20) G		
Not environmentally friendly - higher CO <sub>2</sub> emissions		
England & Wales		EU Directive 2002/91/EC

These particulars, whilst believed to be accurate are set out as a general outline only for guidance and do not constitute any part of an offer or contract. Intending purchasers should not rely on them as statements of representation of fact, but must satisfy themselves by inspection or otherwise as to their accuracy. No person in this firm's employment has the authority to make or give any representation or warranty in respect of the property.