

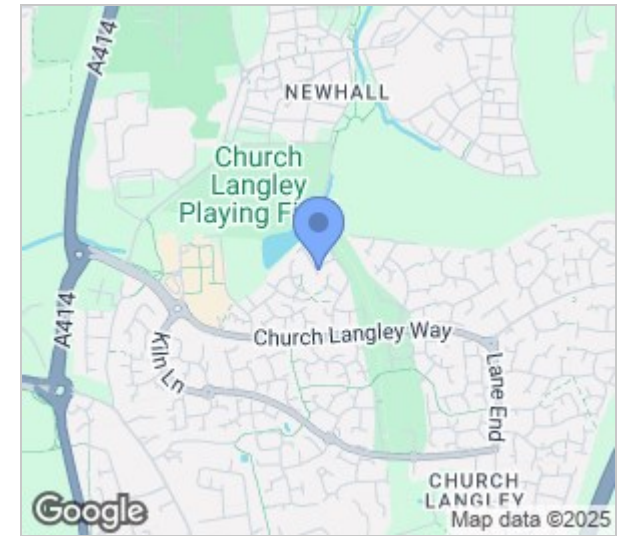


Mallards Rise, Church Langley, CM17 9PL  
£1,900 Per Month

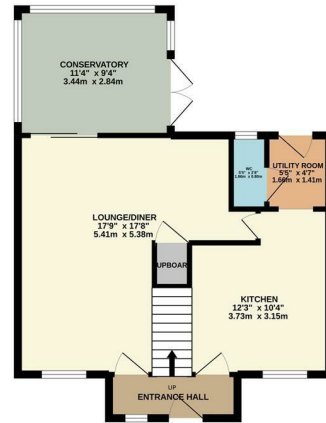
3 2 2 C

# Mallards Rise, Church Langley, CM17 9PL

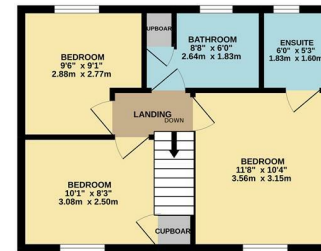
A three bedroom detached family home with a conservatory, available early November 2025 on unfurnished basis. The ground floor accommodation comprises an entrance hall leading to an L shaped lounge/diner, kitchen with a range of fitted wall & base level units, utility room, cloakroom/WC and a conservatory. The first floor offers a master bedroom with en-suite shower room, two further bedrooms and a family bathroom with a white three piece-suite. Outside the rear garden is southerly facing and is laid to lawn with a patio area and side access, there is also a driveway to the side (please note, the garage is not included)



GROUND FLOOR  
543 sq.ft. (50.4 sq.m.) approx.



1ST FLOOR  
407 sq.ft. (37.8 sq.m.) approx.



REYLANDJOHNSONMIR

TOTAL FLOOR AREA: 949 sq.ft. (88.2 sq.m.) approx.

Whilst every attempt has been made to ensure the accuracy of the floorplans contained here, measurements of doors, windows, rooms and any other items are approximate and no responsibility is taken for any errors or misstatements. This plan is for illustrative purposes only and should be used as such by any prospective purchaser. The services, systems and appliances shown have not been tested and no guarantee as to their operability or efficiency can be given.  
Made with Metropix (2022)



| Energy Efficiency Rating                    |  | Current                 | Potential |
|---|--|-------------------------|-----------|
| Very energy efficient - lower running costs |  |                         |           |
| (92 plus) <b>A</b>                          |  |                         |           |
| (81-91) <b>B</b>                            |  |                         |           |
| (69-80) <b>C</b>                            |  |                         |           |
| (55-68) <b>D</b>                            |  |                         |           |
| (39-54) <b>E</b>                            |  |                         |           |
| (21-38) <b>F</b>                            |  |                         |           |
| (1-20) <b>G</b>                             |  |                         |           |
| Not energy efficient - higher running costs |  |                         |           |
| <b>England &amp; Wales</b>                  |  | EU Directive 2002/91/EC |           |

| Environmental Impact (CO <sub>2</sub> ) Rating                  |  | Current                 | Potential |
|---|--|-------------------------|-----------|
| Very environmentally friendly - lower CO <sub>2</sub> emissions |  |                         |           |
| (92 plus) <b>A</b>  |  |                         |           |
| (81-91) <b>B</b>  |  |                         |           |
| (69-80) <b>C</b>  |  |                         |           |
| (55-68) <b>D</b>  |  |                         |           |
| (39-54) <b>E</b>  |  |                         |           |
| (21-38) <b>F</b>  |  |                         |           |
| (1-20) <b>G</b>   |  |                         |           |
| Not environmentally friendly - higher CO <sub>2</sub> emissions |  |                         |           |
| <b>England &amp; Wales</b>                                      |  | EU Directive 2002/91/EC |           |

These particulars, whilst believed to be accurate are set out as a general outline only for guidance and do not constitute any part of an offer or contract. Intending purchasers should not rely on them as statements of representation of fact, but must satisfy themselves by inspection or otherwise as to their accuracy. No person in this firm's employment has the authority to make or give any representation or warranty in respect of the property.

T. 01279 216216 E. info@rjestateagents.co.uk

1 Acorn Mews, Harlow, Essex, CM18 6NA www.rjestateagents.co.uk