



Woodland Grove, Epping, CM16 4NG
£1,500 Per Month

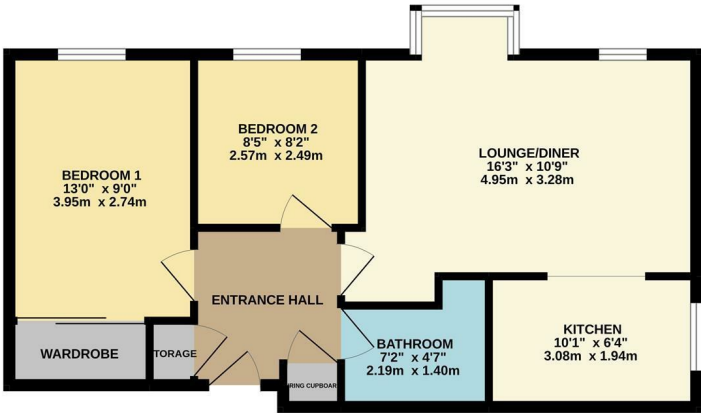


Woodland Grove, Epping, CM16 4NG

An immaculate, two bedroom, top floor apartment in a desirable development close to Epping tube station. The property has an entrance hall, two double bedrooms, a modern bathroom with three-piece suite, spacious lounge/diner and a fitted kitchen which has a range of wall and base level units. Woodland Grove is located within central Epping, walking distance to the station and benefits from communal gardens, many with lawn areas, shrub and flower borders. Separate car parking areas with residents parking, communal hallways and stairwells to the apartment buildings with secure entry phone systems. The property is available NOW on an unfurnished basis.



GROUND FLOOR
570 sq.ft. (53.0 sq.m.) approx.



TOTAL FLOOR AREA: 570 sq.ft. (53.0 sq.m.) approx.
While every attempt has been made to ensure the accuracy of the floorplan contained herein, measurements of doors, windows, rooms and any other items are approximate and no responsibility is taken for any error, omission or misstatement. This plan is for illustrative purposes only and should be used as such by any prospective purchaser. The services, systems and appliances shown have not been tested and no guarantee is given for their operation or efficiency can be given.
Made with Metrepro G2022



| Energy Efficiency Rating | | |
|---|-------------------------|-----------|
| | Current | Potential |
| Very energy efficient - lower running costs | | |
| (92 plus) A | | |
| (81-91) B | | |
| (69-80) C | | |
| (55-68) D | | |
| (39-54) E | | |
| (21-38) F | | |
| (1-20) G | | |
| Not energy efficient - higher running costs | | |
| England & Wales | EU Directive 2002/91/EC | |

| Environmental Impact (CO ₂) Rating | | |
|---|-------------------------|-----------|
| | Current | Potential |
| Very environmentally friendly - lower CO ₂ emissions | | |
| (92 plus) A | | |
| (81-91) B | | |
| (69-80) C | | |
| (55-68) D | | |
| (39-54) E | | |
| (21-38) F | | |
| (1-20) G | | |
| Not environmentally friendly - higher CO ₂ emissions | | |
| England & Wales | EU Directive 2002/91/EC | |

These particulars, whilst believed to be accurate are set out as a general outline only for guidance and do not constitute any part of an offer or contract. Intending purchasers should not rely on them as statements of representation of fact, but must satisfy themselves by inspection or otherwise as to their accuracy. No person in this firms employment has the authority to make or give any representation or warranty in respect of the property.