

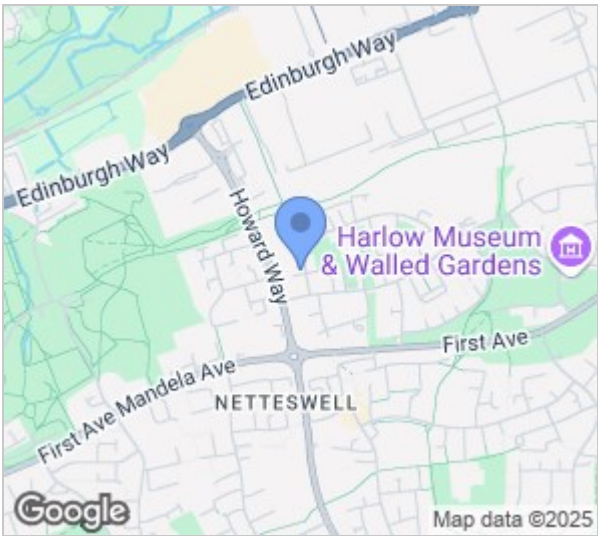
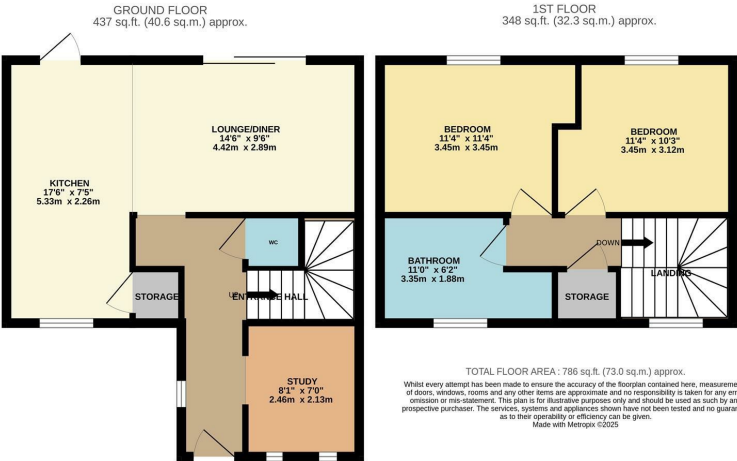


Glebelands, Harlow, CM20 2PA
Guide Price £325,000



Glebelands, Harlow, CM20 2PA

GUIDE PRICE: £325,000 - £340,000. Found in the desirable Mark Hall North area of Harlow is this well presented two double bedroom family home. The property boasts an open plan layout downstairs with a well maintained kitchen with a range of wall and base units, Downstairs cloakroom and study/Playroom. Upstairs offers two double bedrooms with wardrobe space and well looked after family bathroom with three piece suite. The garden is approximately 80ft long mostly lain to lawn and un-overlooked. Glebelands is always a popular area, with excellent local schools, shops, transport links and Harlow Town Park all within walking distance.



Energy Efficiency Rating			Environmental Impact (CO ₂) Rating		
	Current	Potential		Current	Potential
Very energy efficient - lower running costs			Very environmentally friendly - lower CO ₂ emissions		
(92 plus) A			(92 plus) A		
(81-91) B			(81-91) B		
(69-80) C			(69-80) C		
(55-68) D			(55-68) D		
(39-54) E			(39-54) E		
(21-38) F			(21-38) F		
(1-20) G			(1-20) G		
Not energy efficient - higher running costs			Not environmentally friendly - higher CO ₂ emissions		
England & Wales	EU Directive 2002/91/EC		England & Wales	EU Directive 2002/91/EC	

These particulars, whilst believed to be accurate are set out as a general outline only for guidance and do not constitute any part of an offer or contract. Intending purchasers should not rely on them as statements of representation of fact, but must satisfy themselves by inspection or otherwise as to their accuracy. No person in this firms employment has the authority to make or give any representation or warranty in respect of the property.