



Mill Lane, Sawbridgeworth, CM21 9PL
£1,250 Per Month

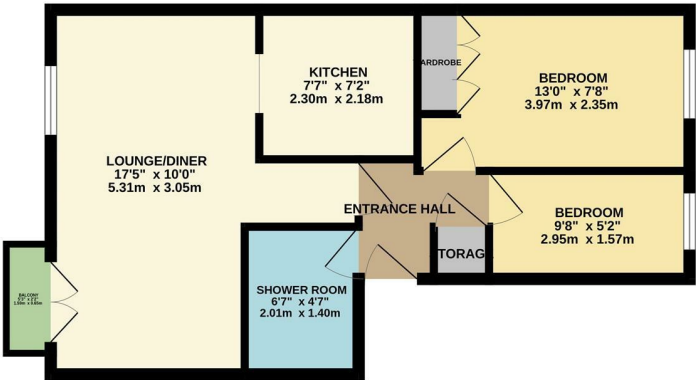


Mill Lane, Sawbridgeworth, CM21 9PL

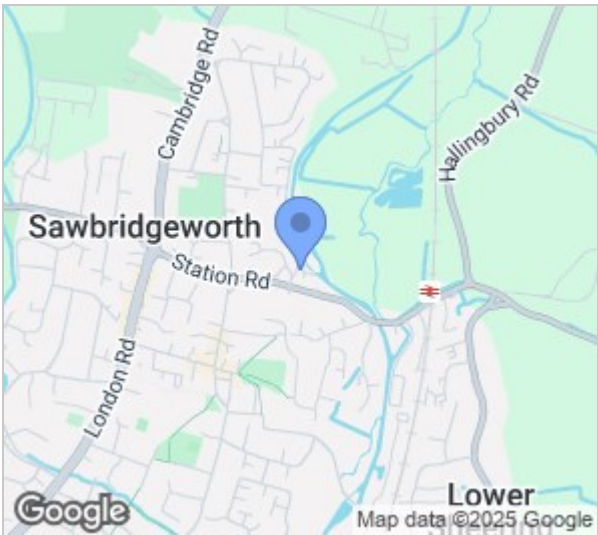
A two bedroom first floor apartment, available NOW on an unfurnished basis, located in a quiet turning off mill lane and within a short distance to Sawbridgeworth train station. The property has recently been decorated throughout and offers a lounge/diner with French doors opening onto the balcony, two bedrooms, a fully tiled shower room and a modern fitted kitchen which has a range of fitted wall and base units and white goods. There is also convenient loft space and allocated parking.



GROUND FLOOR
460 sq.ft. (42.8 sq.m.) approx.



TOTAL FLOOR AREA : 460 sq.ft. (42.8 sq.m.) approx.
While every attempt has been made to ensure the accuracy of the floorplan contained herein, measurements of doors, windows, doors and any other items are approximate and no responsibility is taken for any errors or omissions in the measurements. The plan is for guidance purposes only and should be used as a guide only by any prospective purchaser. The services, systems and appliances shown have not been tested and no guarantee is given as to their operability or efficiency can be given.
Made with Metrepro CC025



Energy Efficiency Rating		
	Current	Potential
Very energy efficient - lower running costs		
(92 plus) A		
(81-91) B		
(69-80) C		
(55-68) D		
(39-54) E		
(21-38) F		
(1-20) G		
Not energy efficient - higher running costs		
England & Wales	EU Directive 2002/91/EC	

Environmental Impact (CO ₂) Rating		
	Current	Potential
Very environmentally friendly - lower CO ₂ emissions		
(92 plus) A		
(81-91) B		
(69-80) C		
(55-68) D		
(39-54) E		
(21-38) F		
(1-20) G		
Not environmentally friendly - higher CO ₂ emissions		
England & Wales	EU Directive 2002/91/EC	

These particulars, whilst believed to be accurate are set out as a general outline only for guidance and do not constitute any part of an offer or contract. Intending purchasers should not rely on them as statements of representation of fact, but must satisfy themselves by inspection or otherwise as to their accuracy. No person in this firms employment has the authority to make or give any representation or warranty in respect of the property.