



Rubys Rise, 22 Post Office Walk, Harlow, CM20 1BB
£900 Per Month

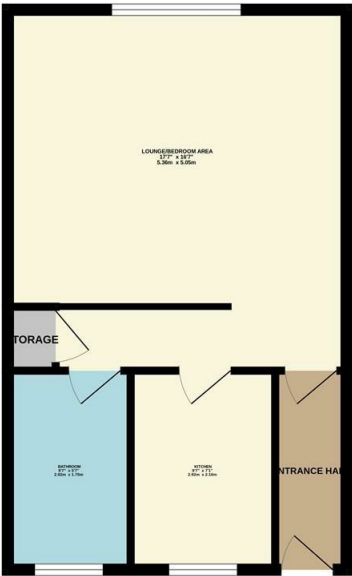


Rubys Rise, 22 Post Office Walk, Harlow, CM20 1BB

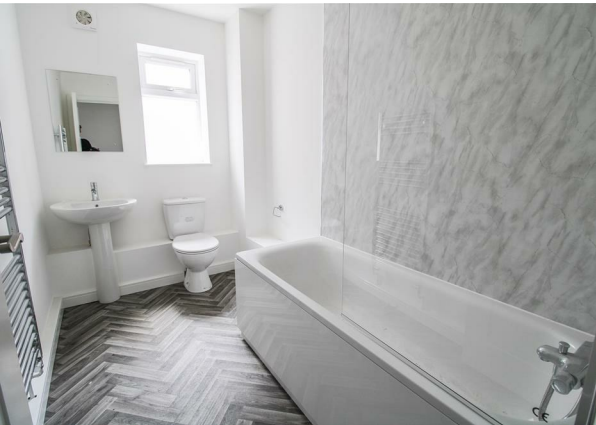
A studio apartment on the first floor, available NOW on an unfurnished basis. The property has an entrance hall, large living/bedroom area, bathroom with a white three-piece suite and a modern fitted kitchen which has a range of wall and base units and white goods. There is also a secure door entry system and CCTV covering the outside and communal areas.



GROUND FLOOR
443 sq.ft. (41.1 sq.m.) approx.



TOTAL FLOOR AREA : 443 sq.ft. (41.1 sq.m.) approx.
Whilst every attempt has been made to ensure the accuracy of the figures contained here, measurements of plots, volumes, areas and any other items are approximate and no responsibility is taken for any error, omission or misstatement. This plan is for illustrative purposes only and should be used as a guide only. The services, systems and appliances shown have not been tested and no guarantee as to their operability or efficiency can be given.
Made with Skerpen 10/2023



Energy Efficiency Rating		
	Current	Potential
Very energy efficient - lower running costs		
(92 plus) A		
(81-91) B		
(69-80) C		
(55-68) D		
(39-54) E		
(21-38) F		
(1-20) G		
Not energy efficient - higher running costs		
England & Wales	EU Directive 2002/91/EC	

Environmental Impact (CO ₂) Rating		
	Current	Potential
Very environmentally friendly - lower CO ₂ emissions		
(92 plus) A		
(81-91) B		
(69-80) C		
(55-68) D		
(39-54) E		
(21-38) F		
(1-20) G		
Not environmentally friendly - higher CO ₂ emissions		
England & Wales	EU Directive 2002/91/EC	

These particulars, whilst believed to be accurate are set out as a general outline only for guidance and do not constitute any part of an offer or contract. Intending purchasers should not rely on them as statements of representation of fact, but must satisfy themselves by inspection or otherwise as to their accuracy. No person in this firms employment has the authority to make or give any representation or warranty in respect of the property.