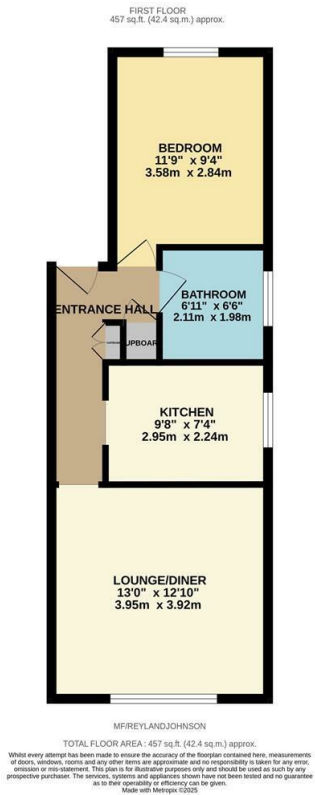


Maunds Farm, Harlow, CM18 7JH  
£200,000



# Maunds Farm, Harlow, CM18 7JH

This one double bedroom first floor flat is well presented throughout and includes allocated parking. As you enter there is an entrance hallway leading to a large lounge/diner with media wall overlooking the communal gardens and parking, a modern fitted kitchen with a range of wall and base units, a double bedroom and a stunning family bathroom with a white three piece suite. Maunds Farm is located just off Commonsides Road, with Latton Common, shops and transport links close by. Lease Remaining: TBC. Service Charge: £95 pcm. Ground Rent: Zero.



Energy Efficiency Rating		
	Current	Potential
Very energy efficient - lower running costs		
(92 plus) A		
(81-91) B		
(69-80) C		
(55-68) D		
(39-54) E		
(21-38) F		
(1-20) G		
Not energy efficient - higher running costs		
England & Wales	EU Directive 2002/91/EC	

Environmental Impact (CO <sub>2</sub> ) Rating		
	Current	Potential
Very environmentally friendly - lower CO <sub>2</sub> emissions		
(92 plus) A		
(81-91) B		
(69-80) C		
(55-68) D		
(39-54) E		
(21-38) F		
(1-20) G		
Not environmentally friendly - higher CO <sub>2</sub> emissions		
England & Wales	EU Directive 2002/91/EC	

These particulars, whilst believed to be accurate are set out as a general outline only for guidance and do not constitute any part of an offer or contract. Intending purchasers should not rely on them as statements of representation of fact, but must satisfy themselves by inspection or otherwise as to their accuracy. No person in this firms employment has the authority to make or give any representation or warranty in respect of the property.