



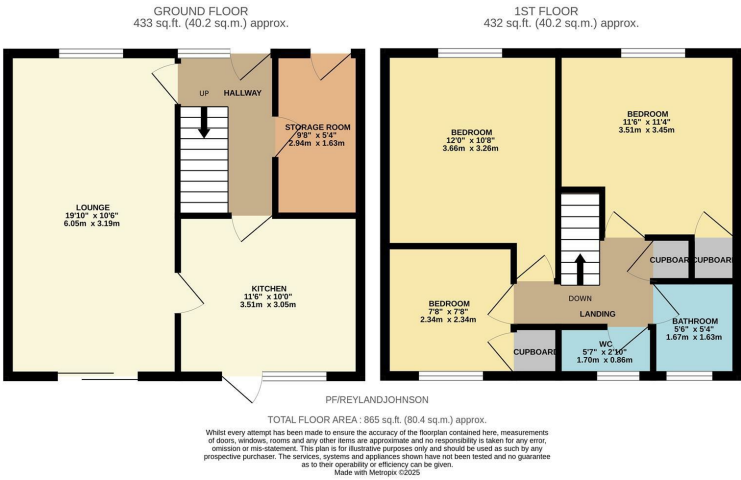
Potters Field, Harlow, CM17 9BY
Guide Price £375,000



Potters Field, Harlow, CM17 9BY

****Guide Price £375,000 to £400,000****

Offered with NO CHAIN is this three bedroom terraced family home with a driveway and south facing rear garden. On the ground floor there is a large lounge/diner, modern fitted kitchen with a range of wall and base units and a storage room, whilst upstairs there are three bedrooms, a family bathroom and a separate WC. Outside the south facing rear garden is mainly laid to lawn with a patio area, artificial lawn and a shed, with the driveway and lawn to the front. Potters Field is located just off Potter Street, within walking distance of local schools, shops and a stones throw from Harlow Common, plus the M11 is close by.



Energy Efficiency Rating			Environmental Impact (CO ₂) Rating		
	Current	Potential		Current	Potential
Very energy efficient - lower running costs			Very environmentally friendly - lower CO ₂ emissions		
(92 plus) A			(92 plus) A		
(81-91) B			(81-91) B		
(69-80) C			(69-80) C		
(55-68) D			(55-68) D		
(39-54) E			(39-54) E		
(21-38) F			(21-38) F		
(1-20) G			(1-20) G		
Not energy efficient - higher running costs			Not environmentally friendly - higher CO ₂ emissions		
England & Wales			England & Wales		
EU Directive 2002/91/EC			EU Directive 2002/91/EC		

These particulars, whilst believed to be accurate are set out as a general outline only for guidance and do not constitute any part of an offer or contract. Intending purchasers should not rely on them as statements of representation of fact, but must satisfy themselves by inspection or otherwise as to their accuracy. No person in this firms employment has the authority to make or give any representation or warranty in respect of the property.