

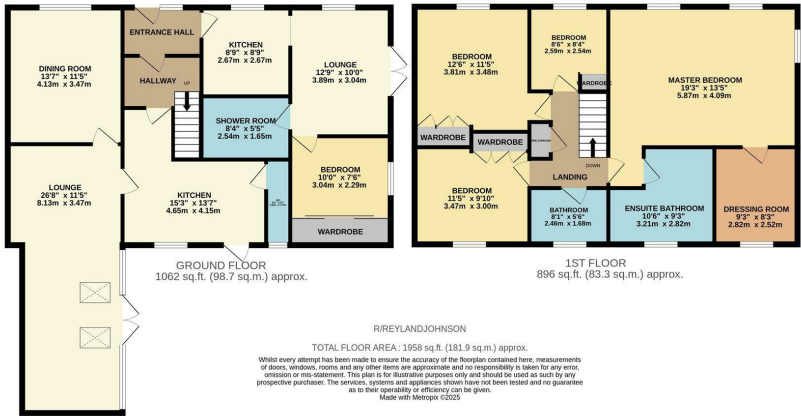
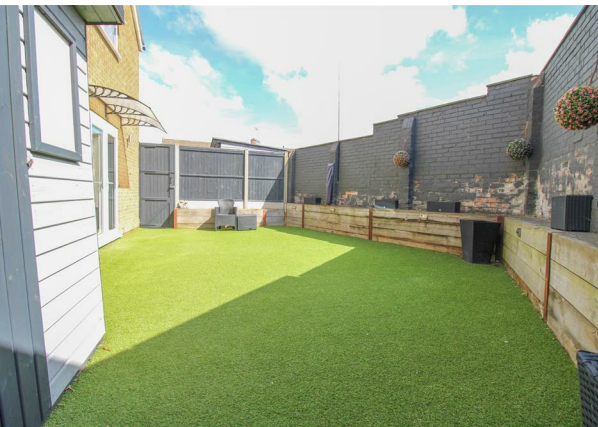


Rundells, Harlow, CM18 7HA
£650,000



Rundells, Harlow, CM18 7HA

This hugely extended four bedroom semi detached family home, includes a self contained one bedroom annexe, a large driveway and is located in a popular quiet cul-de-sac. As you enter there is a hallway leading to the main house or the annexe, a modern kitchen with a range of fitted wall and base units, a large lounge with exposed beams and skylights, a dining room and a cloakroom/WC. Upstairs there are four bedrooms and a modern family bathroom, with the master suite comprising of a 19ft bedroom, a huge en-suite and a dressing room. The annexe includes a modern kitchen, which opens onto a lounge/diner with access to the garden, a bedroom with fitted wardrobes and a beautiful shower room. Outside the rear garden is mainly laid to artificial lawn, with raised fencing, a shed and side access leading out to the driveway for three cars. The property is located within a quiet cul-de-sac in Rundells, just off Commonsides Road, with excellent local schools, shops and Latton Common within walking distance.



Energy Efficiency Rating			Environmental Impact (CO ₂) Rating		
	Current	Potential		Current	Potential
Very energy efficient - lower running costs					
(92 plus) A			Very environmentally friendly - lower CO ₂ emissions		
(81-91) B			(92 plus) A		
(69-80) C			(81-91) B		
(55-68) D			(69-80) C		
(39-54) E			(55-68) D		
(21-38) F			(39-54) E		
(1-20) G			(21-38) F		
Not energy efficient - higher running costs			(1-20) G		
England & Wales			England & Wales		
EU Directive 2002/91/EC			EU Directive 2002/91/EC		

These particulars, whilst believed to be accurate are set out as a general outline only for guidance and do not constitute any part of an offer or contract. Intending purchasers should not rely on them as statements of representation of fact, but must satisfy themselves by inspection or otherwise as to their accuracy. No person in this firms employment has the authority to make or give any representation or warranty in respect of the property.