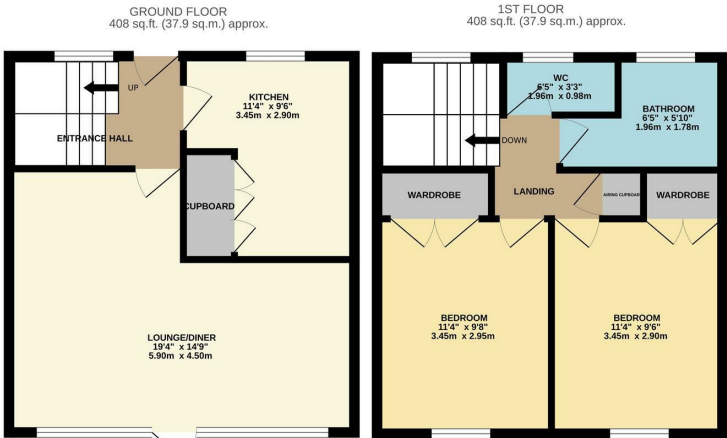


Barley Croft, Harlow, CM18 7RA
£230,000

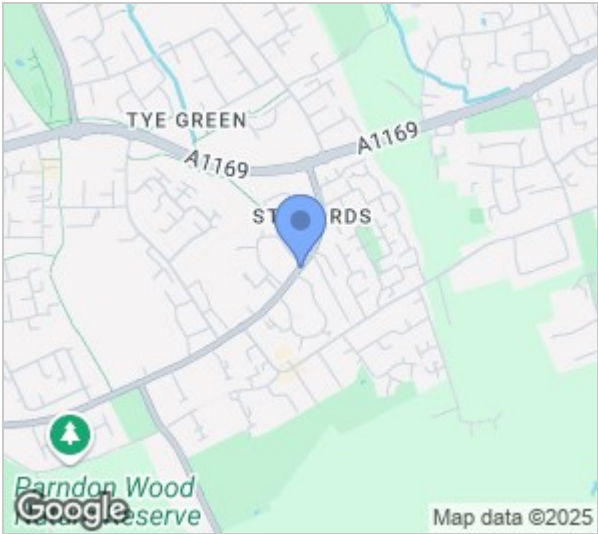


Barley Croft, Harlow, CM18 7RA

Available CHAIN FREE is this two double bedroom end terrace home with a modern kitchen and south facing garden. On the ground floor there is an entrance hallway leading to an open plan lounge/diner and a fitted kitchen with a range of wall and base units, whilst upstairs there are two double bedrooms with fitted wardrobes, a family bathroom and a separate WC. Outside, the rear garden is mainly laid to lawn with a patio area, shed and rear access. Barley Croft is located just off Paringdon Road, between Bush Fair and Staple Tye Shopping Areas, with local schools and open fields within walking distance.



BC/REYLANDJOHNSON
TOTAL FLOOR AREA : 81.7 sq.ft. (75.9 sq.m.) approx.
Whilst every attempt has been made to ensure the accuracy of the floorplan contained here, measurements of doors, windows, rooms and any other items are approximate and no responsibility is taken for any error, omission or mis-statement. This plan is for illustrative purposes only and should be used as such by any prospective purchaser. The services, systems and appliances shown have not been tested and no guarantee as to their operability or efficiency can be given.
Made with Metropix CS2025



| Energy Efficiency Rating | | |
|---|---------|-----------|
| | Current | Potential |
| Very energy efficient - lower running costs | | |
| (92 plus) A | | |
| (81-91) B | | |
| (69-80) C | | |
| (55-68) D | | |
| (39-54) E | | |
| (21-38) F | | |
| (1-20) G | | |
| Not energy efficient - higher running costs | | |
| England & Wales | | |
| EU Directive 2002/91/EC | | |

| Environmental Impact (CO ₂) Rating | | |
|---|---------|-----------|
| | Current | Potential |
| Very environmentally friendly - lower CO ₂ emissions | | |
| (92 plus) A | | |
| (81-91) B | | |
| (69-80) C | | |
| (55-68) D | | |
| (39-54) E | | |
| (21-38) F | | |
| (1-20) G | | |
| Not environmentally friendly - higher CO ₂ emissions | | |
| England & Wales | | |
| EU Directive 2002/91/EC | | |

These particulars, whilst believed to be accurate are set out as a general outline only for guidance and do not constitute any part of an offer or contract. Intending purchasers should not rely on them as statements of representation of fact, but must satisfy themselves by inspection or otherwise as to their accuracy. No person in this firms employment has the authority to make or give any representation or warranty in respect of the property.