



Canons Gate, Harlow, CM20 1QQ  
£350,000

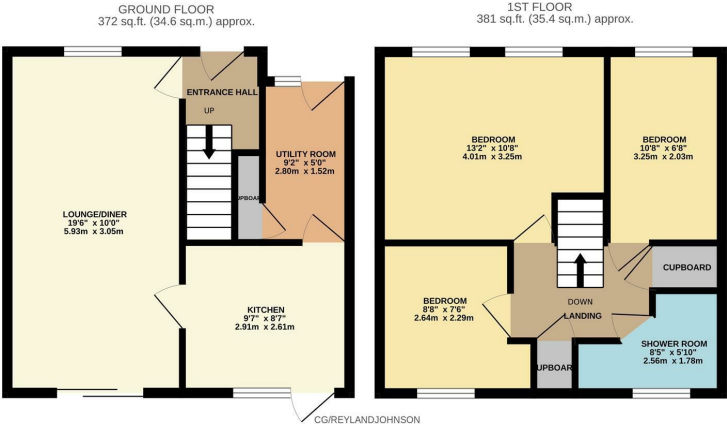




# Canons Gate, Harlow, CM20 1QQ

Offered with NO CHAIN is this three bedroom terraced family home located in the popular CM20 area, just a short walk to Harlow Town Train Station and Princess Alexandra Hospital. The property comprises an entrance hallway leading to a large lounge/diner, a kitchen with a range of fitted wall and base units and a utility area, whilst upstairs there are three bedrooms with fitted wardrobes to the master and a well presented shower room. Outside, the large rear garden is mainly laid to lawn with a patio area and shed.

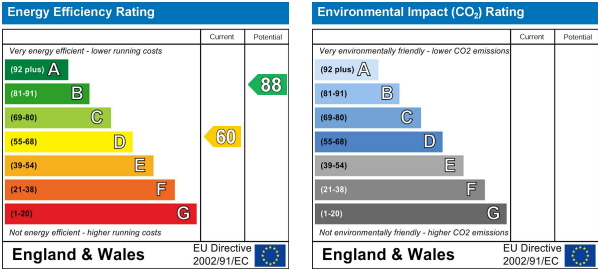
Canons Gate is located just off Hobtoe Road, with local schools shops and open fields within walking distance.



TOTAL FLOOR AREA: 753 sq.ft. (69.9 sq.m.) approx.

Whilst every attempt has been made to ensure the accuracy of the floorplan contained here, measurements of doors, windows, rooms and any other items are approximate and no responsibility is taken for any error, omission or mis-statement. This plan is for illustrative purposes only and should be used as such by any prospective purchaser. The services, systems and appliances shown have not been tested and no guarantee as to their operability or efficiency can be given.

Made with Metropen ©2025



These particulars, whilst believed to be accurate are set out as a general outline only for guidance and do not constitute any part of an offer or contract. Intending purchasers should not rely on them as statements of representation of fact, but must satisfy themselves by inspection or otherwise as to their accuracy. No person in this firms employment has the authority to make or give any representation or warranty in respect of the property.