

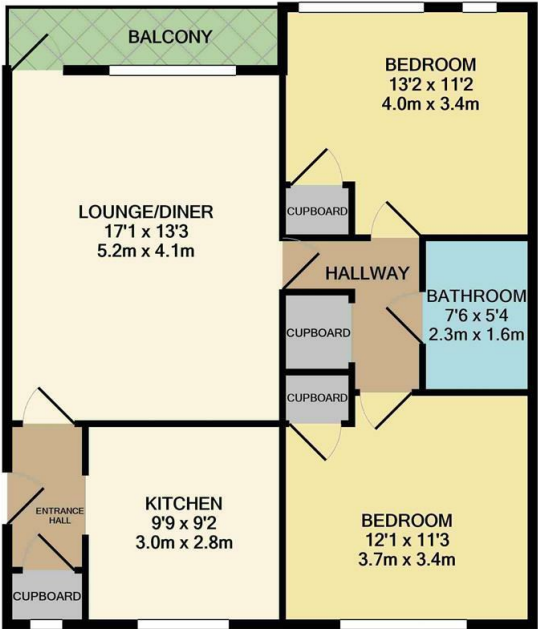
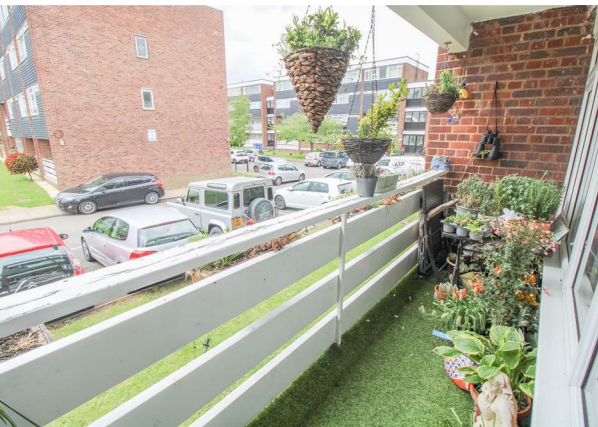


Park Court, Harlow, CM20 2PZ
£1,400 Per Month

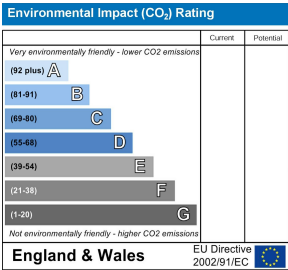
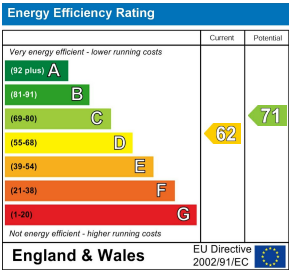


Park Court, Harlow, CM20 2PZ

A two bedroom first floor flat with its own balcony and a garage en-bloc. The property is nicely presented and comprises an entrance hall leading to a kitchen with a range of fitted wall & base level units and some white goods, lounge/diner, balcony, bathroom with a three piece-suite and two double bedrooms. Park Court is located in central Harlow close to Harlow town centre, town park, Princess Alexandra hospital and Harlow town train station. Available mid may 2025, on an unfurnished basis with some white goods.



REYLAND/JOHNSON/PC
TOTAL APPROX. FLOOR AREA 717 SQ.FT. (66.6 SQ.M.)
Whilst every attempt has been made to ensure the accuracy of the floor plan contained here, measurements of doors, windows, rooms and any other items are approximate and no responsibility is taken for any error, omission, or mis-statement. This plan is for illustrative purposes only and should be used as such by any prospective purchaser. The services, systems and appliances shown have not been tested and no guarantee as to their operability or efficiency can be given
Made with Metropix ©2021



These particulars, whilst believed to be accurate are set out as a general outline only for guidance and do not constitute any part of an offer or contract. Intending purchasers should not rely on them as statements of representation of fact, but must satisfy themselves by inspection or otherwise as to their accuracy. No person in this firms employment has the authority to make or give any representation or warranty in respect of the property.