

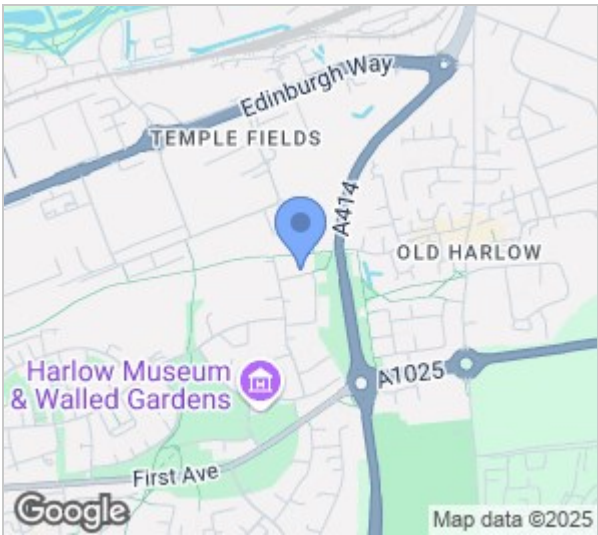
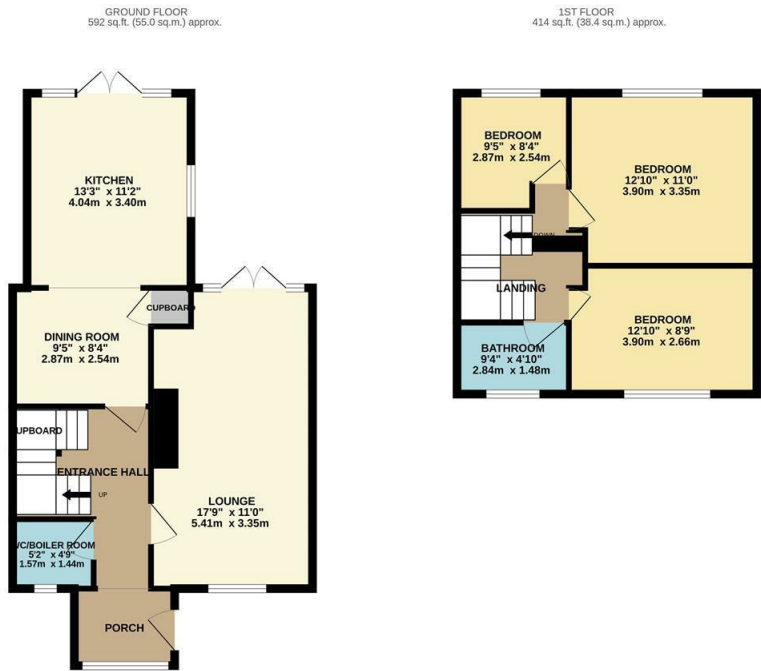


Broomfield, Harlow, CM20 2JY
£1,800 Per Month



Broomfield, Harlow, CM20 2JY

An extended three bedroom home in a popular location with driveway and large garden. Situated in the popular Mark Hall North area which benefits from local shops and schooling, playing fields, parks and a short distance to Old Harlow High Street. The property has accommodation comprising of an entrance hall, lounge, kitchen/diner, three bedrooms and a shower room. The garden would be ideal for a keen gardener and the property is available now on an unfurnished basis.



Energy Efficiency Rating			Environmental Impact (CO ₂) Rating		
	Current	Potential		Current	Potential
Very energy efficient - lower running costs			Very environmentally friendly - lower CO ₂ emissions		
(92 plus) A			(92 plus) A		
(81-91) B			(81-91) B		
(69-80) C			(69-80) C		
(55-68) D			(55-68) D		
(39-54) E			(39-54) E		
(21-38) F			(21-38) F		
(1-20) G			(1-20) G		
Not energy efficient - higher running costs			Not environmentally friendly - higher CO ₂ emissions		
England & Wales			England & Wales		
EU Directive 2002/91/EC			EU Directive 2002/91/EC		

These particulars, whilst believed to be accurate are set out as a general outline only for guidance and do not constitute any part of an offer or contract. Intending purchasers should not rely on them as statements of representation of fact, but must satisfy themselves by inspection or otherwise as to their accuracy. No person in this firms employment has the authority to make or give any representation or warranty in respect of the property.