



Bowhill Way, Harlow, CM20 1FH
£1,750 Per Month

- Three Bedrooms
- Semi Detached
- En-Suite Shower
- Garage & Drive
- Available NOW
- Unfurnished

Bowhill Way, Harlow, CM20 1FH

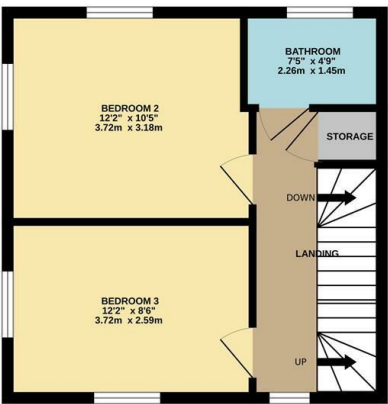
£1,750 Per Month

****LET AGREED PRIOR TO MARKETING**** more properties needed for waiting tenants.

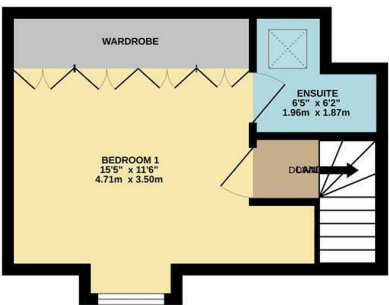
GROUND FLOOR
358 sq.ft. (33.2 sq.m.) approx.



1ST FLOOR
358 sq.ft. (33.2 sq.m.) approx.

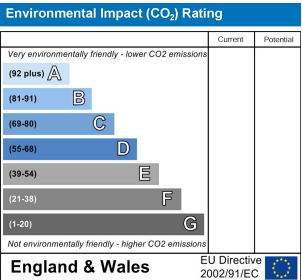
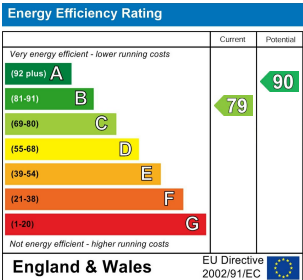
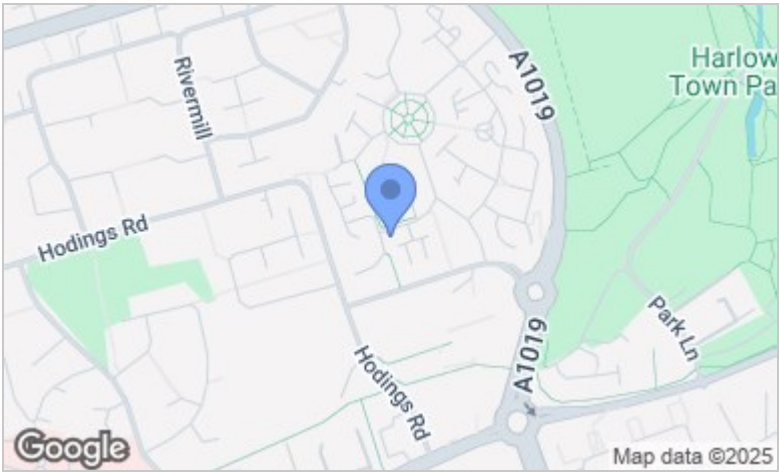


2ND FLOOR
237 sq.ft. (22.0 sq.m.) approx.



TOTAL FLOOR AREA : 952 sq.ft. (88.5 sq.m.) approx.

Whilst every attempt has been made to ensure the accuracy of the floorplan contained here, measurements of doors, windows, rooms and any other items are approximate and no responsibility is taken for any error, omission or mis-statement. This plan is for illustrative purposes only and should be used as such by any prospective purchaser. The services, systems and appliances shown have not been tested and no guarantee as to their operability or efficiency can be given.
Made with Metropix ©2025



These particulars, whilst believed to be accurate are set out as a general outline only for guidance and do not constitute any part of an offer or contract. Intending purchasers should not rely on them as statements of representation of fact, but must satisfy themselves by inspection or otherwise as to their accuracy. No person in this firm's employment has the authority to make or give any representation or warranty in respect of the property.