

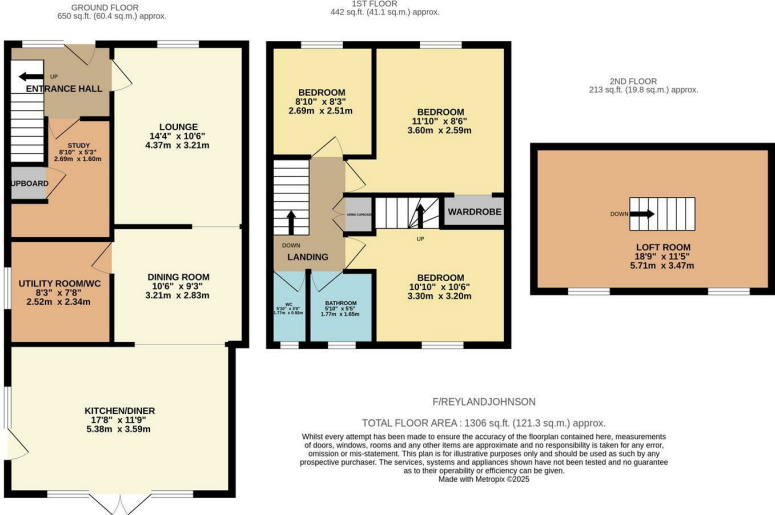


Finchmoor, Harlow, CM18 6UD
Guide Price £390,000



Finchmoor, Harlow, CM18 6UD

GUIDE PRICE: £390,000 - £400,000. An extended, well-presented three bedroom end of terraced family home situated in the sought after location of Finchmoor, Harlow. The ground floor includes an inviting entrance hallway leading to a study/office, a spacious lounge with feature fireplace, a dining room which opens into a stunning kitchen/breakfast room with a range of wall and base units and a breakfast bar. complete with french doors that leading to the rear garden, as well as a good-sized utility room/cloakroom. The first floor features three well proportioned bedrooms with bedroom two hosting a staircase leading to a loft room, as well as a family bathroom with a separate W.C. The rear garden features a variety of of established plants and shrubs, lawned area and ample patio area for entertaining, as well as offering rear access. Finchmoor is located close to Staple Tye, with shops, doctors schools and playing fields within walking distance.



Energy Efficiency Rating			Environmental Impact (CO ₂) Rating		
	Current	Potential		Current	Potential
Very energy efficient - lower running costs					
(92 plus) A			Very environmentally friendly - lower CO ₂ emissions		
(81-91) B			(92 plus) A		
(69-80) C			(81-91) B		
(55-68) D			(69-80) C		
(39-54) E			(55-68) D		
(21-38) F			(39-54) E		
(1-20) G			(21-38) F		
Not energy efficient - higher running costs			(1-20) G		
England & Wales			England & Wales		
EU Directive 2002/91/EC			EU Directive 2002/91/EC		

These particulars, whilst believed to be accurate are set out as a general outline only for guidance and do not constitute any part of an offer or contract. Intending purchasers should not rely on them as statements of representation of fact, but must satisfy themselves by inspection or otherwise as to their accuracy. No person in this firms employment has the authority to make or give any representation or warranty in respect of the property.