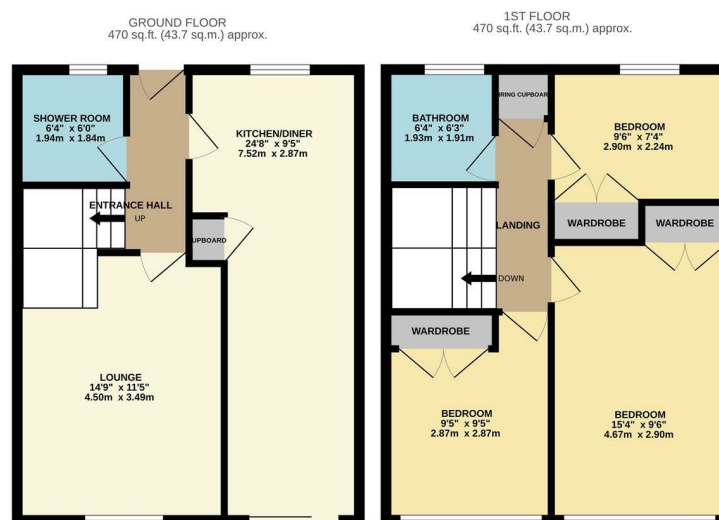
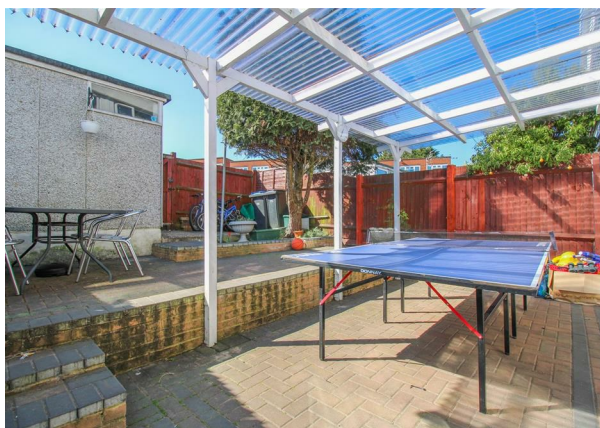


Lower Meadow, Harlow, CM18 7RF
£280,000



Lower Meadow, Harlow, CM18 7RF

This excellent sized three bedroom terraced family home is located in the popular area of Lower Meadow and includes a large kitchen/diner. On the ground floor there is an entrance hallway leading to the kitchen/diner with a range of fitted wall and base units, a separate lounge, plus a shower room, whilst upstairs there are three bedrooms, all with double fitted wardrobes and a family bathroom with a white three piece suite. Outside the rear garden is laid to patio, with a covered area, rear access and a shed. Lower Meadow is located just off Paringdon Road, within walking distance of local schools, shops and open fields.

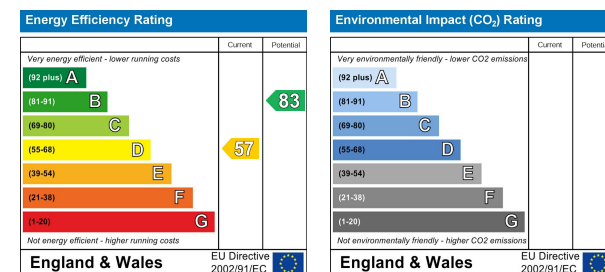


LM/REYLANDJOHNSON

TOTAL FLOOR AREA: 940 sq.ft. (87.4 sq.m.) approx.

Whilst every attempt has been made to ensure the accuracy of the floorplan contained here, measurements of doors, windows, rooms and any other items are approximate and responsibility is taken for any error, omission or mis-statement. This plan is for illustrative purposes only and should be used as such by any prospective purchaser. The services, systems and appliances shown have not been tested and no guarantee is given as to their operability or efficiency can be given.

Made with Metropix ©2025



These particulars, whilst believed to be accurate are set out as a general outline only for guidance and do not constitute any part of an offer or contract. Intending purchasers should not rely on them as statements of representation of fact, but must satisfy themselves by inspection or otherwise as to their accuracy. No person in this firms employment has the authority to make or give any representation or warranty in respect of the property.