



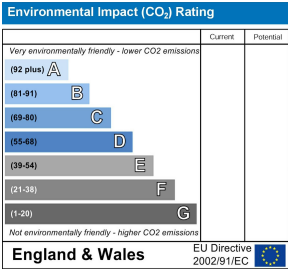
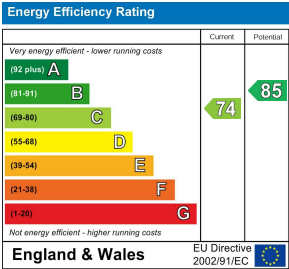
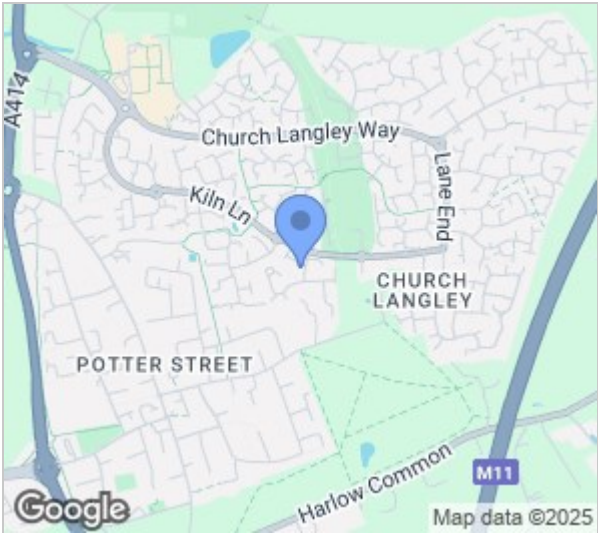
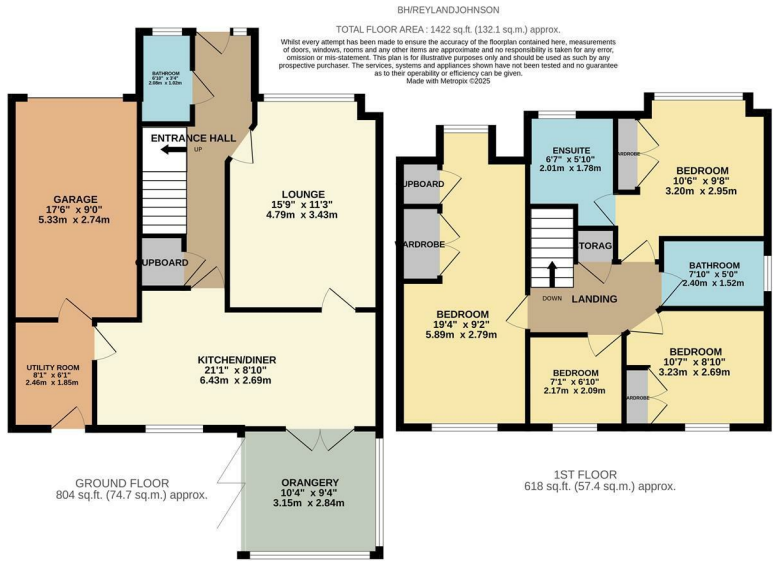
Burley Hill, Harlow, CM17 9QH
Guide Price £550,000



Burley Hill, Harlow, CM17 9QH

Guide Price £550,000 to £575,000

A four bedroom detached family home in the sought after cul-de-sac turning of Burley Hill in Church Langley. The property boasts a south facing garden, garage and driveway for multiple vehicles, as well as offering a spacious ground floor layout including an orangery and separate utility room. The ground floor comprises a hallway with a downstairs WC, lounge, fitted modern kitchen/dining room, utility room and orangery, whilst the first floor offers three double bedrooms (including an en-suite to the master), a single bedroom and bathroom. Burley Hill is located in Church Langley, well positioned for local schools, Tesco and the M11.



These particulars, whilst believed to be accurate are set out as a general outline only for guidance and do not constitute any part of an offer or contract. Intending purchasers should not rely on them as statements of representation of fact, but must satisfy themselves by inspection or otherwise as to their accuracy. No person in this firms employment has the authority to make or give any representation or warranty in respect of the property.