



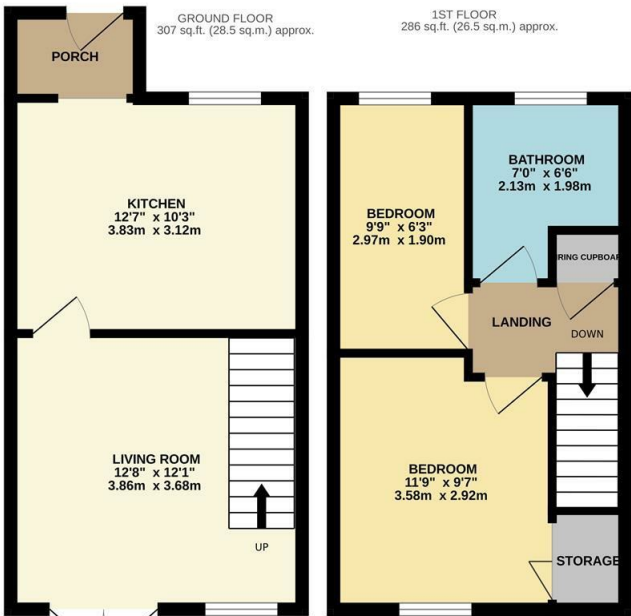
Archers, Harlow, CM19 5SH  
£325,000



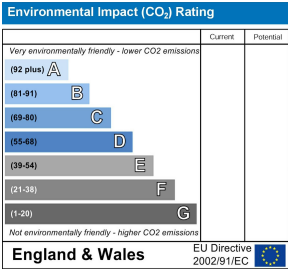
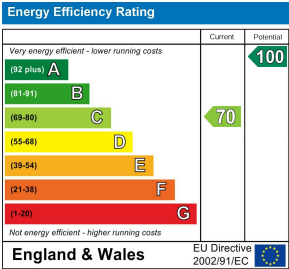


# Archers, Harlow, CM19 5SH

Found in a quiet cul-de-sac, with open fields and forests just a stones throw away is this well presented two bedroom end terrace house with allocated parking. On the ground floor there is a porch leading to a large kitchen with a range of fitted wall and base units and a bright lounge, whilst upstairs there are two bedrooms with fitted wardrobes to the master, plus a modern family bathroom with a white three piece suite. Outside, the rear garden is mainly laid to lawn with a patio area, shed and side access leading out to the allocated parking with an EV charge point. Archers is located on the edge of Harlow, close to Epping Green, with local schools and shops close by.



A/REYLANDJOHNSON  
TOTAL FLOOR AREA: 592 sq.ft. (55.0 sq.m.) approx.  
Whilst every attempt has been made to ensure the accuracy of the floorplan contained herein, measurements of doors, windows, rooms and any other items are approximate and no responsibility is taken for any error, omission or mis-statement. This plan is for illustrative purposes only and should be used as such by any prospective purchaser. The services, systems and appliances shown have not been tested and no guarantee as to their operability or efficiency can be given.  
Made with Metropac ©2025



These particulars, whilst believed to be accurate are set out as a general outline only for guidance and do not constitute any part of an offer or contract. Intending purchasers should not rely on them as statements of representation of fact, but must satisfy themselves by inspection or otherwise as to their accuracy. No person in this firms employment has the authority to make or give any representation or warranty in respect of the property.